

MODEL LINE-UP

The Ideal Air Conditioning Solutions For Offices, Educational Institutions, Restaurants And Retail Stores.

Capacity range [Btu/h]	CEILING DUCTED	CEILING & CONSOLE	OUTDOOR UNITS
18,000	 S-18PFB1H5B	—	 U-18PNB1H5
24,000	 S-24PFB1H5B	—	 U-24PNB1H5
30,000	 S-30PFB1H5B	—	 U-30PNB1H5
36,000	 S-36PFB1H5B	 S-36PTB1H5B	 U-36PNB1H8
48,000	 S-48PFB1H5B	 S-48PTB1H5B	 U-48PNB1H8
60,000	 S-60PFB1H5B	 S-60PTB1H5B	 U-60PNB1H8

Panasonic

SINGLE-SPLIT PACKAGED
AIR CONDITIONERS
2024/2025

Fresh series



Do not add or replace refrigerant other than the specified type. Manufacturer is not responsible for the damage and deterioration in safety due to usage of other refrigerant.



NON-INVERTER



QUALITY AIR FOR LIFE

CEILING & CONSOLE

- The slim design makes thickness only 235mm.

NON-INVERTER



A Wireless remote controller is in the same package with the indoor unit.

CZ-RWCB1H (Wireless)



(Optional)

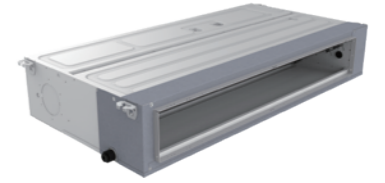
CZ-RTCB1H (Wired)

Capacity [Btu/h]		36,000	48,000	60,000
Power Source	V/Phase/Hz	380-415V~, 3phase, 50Hz		
Indoor		S-36PTB1H5B	S-48PTB1H5B	S-60PTB1H5B
Outdoor		U-36PNB1H8	U-48PNB1H8	U-60PNB1H8
Cooling Capacity: Rated	kW	10.55	14.07	17.58
	Btu/h	36,000	48,000	60,000
Current	A	6.69	8.35	10.00
Power Input: Rated	kW	3.6	4.67	5.71
Efficiency Ratio	COP	2.93	3.01	3.08
	EER [Btu/h]/W	10.00	10.28	10.50
Indoor Unit				
Air Volume (Hi/Mi/Lo)	m ³ /min	25.3/21/13.3	35.8/31.6/22.5	35.8/31.6/22.5
	cfm	893/742/470	1,264/1,116/795	1,264/1,116/795
Sound Pressure Level (Hi/Mi/Lo)	dB [A]	50/46/42	52/47/43	52/47/43
Sound Power Level (Hi/Mi/Lo)	dB [A]	59/55/51	62/57/53	62/57/53
Dimension (HxWxD)	Indoor	mm 235x1,280x690	mm 235x1,600x690	mm 235x1,680x770
	Indoor Package	mm 325x1,360x770	mm 325x1,680x770	mm 325x1,680x770
Weight (Net/Gross)	kg	36.0/42.0	41.0/48.0	41.0/48.0
Outdoor Unit				
Sound Pressure Level	dB [A]	56	57	58
Sound Power Level	dB [A]	66	67	68
Dimension (HxWxD)	Outdoor	mm 805x970x395	mm 805x970x395	mm 1,325x940x370
	Outdoor Package	mm 890x1,105x495	mm 890x1,105x495	mm 1,440x1,080x430
Weight (Net/Gross)	kg	62.0/66.0	72.0/76.0	93.0/103.0
Piping Connection	Gas Pipe	mm [inch] 15.88 [5/8"]	mm [inch] 15.88 [5/8"]	mm [inch] 19.05 [3/4"]
	Liquid Pipe	mm [inch] 9.52 [3/8"]	mm [inch] 9.52 [3/8"]	mm [inch] 9.52 [3/8"]
Pipe Length (Max)	m	50	50	50
Elevation Difference	m	30	30	30
Maximum Chargeless Length (Max)	m	5	5	5
Additional Gas	g/m	50	50	50
Operating Range, Outdoor (Min-Max)	°C	17-49	17-49	17-49

CEILING DUCTED

- Air intake from rear as standard.

NON-INVERTER



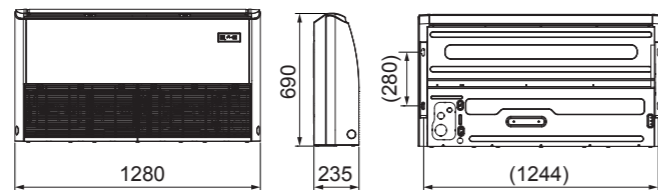
A Wired remote controller is in the same package with the indoor unit.

CZ-RTCB1H (Wired)

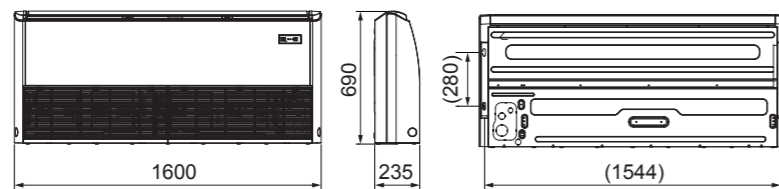
Capacity [Btu/h]		18,000	24,000	30,000	36,000	48,000	60,000
Power Source	V/Phase/Hz	220-240V~, 1phase, 50Hz			380-415V~, 3phase, 50Hz		
Indoor		S-18PFB1H5B	S-24PFB1H5B	S-30PFB1H5B	S-36PFB1H5B	S-48PFB1H5B	S-60PFB1H5B
Outdoor		U-18PNB1H5	U-24PNB1H5	U-30PNB1H5	U-36PNB1H8	U-48PNB1H8	U-60PNB1H8
Cooling Capacity: Rated	kW	5.28	7.03	8.79	10.55	14.07	17.58
	Btu/h	18,000	24,000	30,000	36,000	48,000	60,000
Current	A	8.00	10.40	12.50	6.69	8.35	10.00
Power Input: Rated	kW	1.73	2.34	2.74	3.6	4.67	5.71
Efficiency Ratio	COP	3.05	3.00	3.21	2.93	3.01	3.08
	EER [Btu/h]/W	10.41	10.24	10.95	10.00	10.27	10.51
External Static Pressure	Pa	50	50	50	50	80	80
Indoor Unit							
Air Volume (Hi/Mi/Lo)	m ³ /min	15/12.4/7.91	20.6/18.3/16.5	24.8/21.8/20.8	24.8/21.8/20.8	32.1/27.1/24.3	32.1/27.1/24.3
	cfm	530/438/279	727/646/583	876/770/735	876/770/735	1,134/957/858	1,134/957/858
Sound Pressure Level (Hi/Mi/Lo)	dB [A]	35/31/28	39/36/33	41/38/35	41/38/35	44/43/39	44/43/39
Sound Power Level (Hi/Mi/Lo)	dB [A]	43/39/36	47/44/41	51/48/45	51/48/45	54/52/49	54/52/49
Dimension (HxWxD)	Indoor	mm 200x1,000x460	mm 245x1,000x700	mm 245x1,000x700	mm 245x1,000x700	mm 245x1,400x700	mm 245x1,400x700
	Indoor Package	mm 275x1,300x580	mm 300x1,230x830	mm 300x1,230x830	mm 300x1,230x830	mm 300x1,630x830	mm 300x1,630x830
Weight (Net/Gross)	kg	24.0/28.0	32.0/37.0	32.0/37.0	32.0/37.0	40.0/47.0	40.0/47.0
Outdoor Unit							
Sound Pressure Level	dB [A]	53	54	56	56	57	58
Sound Power Level	dB [A]	64	65	66	66	67	68
Dimension (HxWxD)	Outdoor	mm 545x800x315	mm 655x825x310	mm 700x900x350	mm 805x970x395	mm 805x970x395	mm 1,325x940x370
	Outdoor Package	mm 620x920x400	mm 725x945x435	mm 770x1,020x430	mm 890x1,105x495	mm 890x1,105x495	mm 1,440x1,080x430
Weight (Net/Gross)	kg	36.0/39.0	44.0/47.5	53.0/57.0	62.0/66.0	72.0/76.0	93.0/103.0
Piping Connection	Gas Pipe	mm [inch] 12.7 [1/2"]	mm [inch] 15.88 [5/8"]	mm [inch] 15.88 [5/8"]	mm [inch] 15.88 [5/8"]	mm [inch] 15.88 [5/8"]	mm [inch] 19.05 [3/4"]
	Liquid Pipe	mm [inch] 6.35 [1/4"]	mm [inch] 9.52 [3/8"]	mm [inch] 9.52 [3/8"]	mm [inch] 9.52 [3/8"]	mm [inch] 9.52 [3/8"]	mm [inch] 9.52 [3/8"]
Pipe Length (Max)	m	30	30	30	50	50	50
Elevation Difference	m	20	20	20	30	30	30
Maximum Chargeless Length (Max)	m	5	5	5	5	5	5
Additional Gas	g/m	30	50	50	50	50	50
Operating Range, Outdoor (Min-Max)	°C	17-49	17-49	17-49	17-49	17-49	17-49

Dimensions

36,000 Btu/h

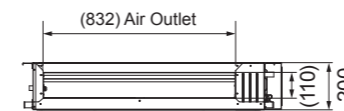


48,000 - 60,000 Btu/h

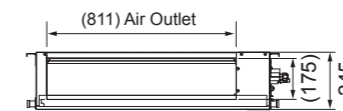


Dimensions

18,000 Btu/h



24,000 - 36,000 Btu/h



48,000 - 60,000 Btu/h

