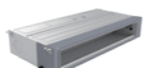


# MODEL LINE-UP

The Ideal Air Conditioning Solutions For Offices, Educational Institutions, Restaurants And Retail Stores.

Capacity range [Btu/h]	CEILING DUCTED	CEILING & CONSOLE	OUTDOOR UNITS
18,000	 S-18PFB1H5B	 S-18PTB1H5B	 U-18PNB1H5
24,000	 S-24PFB1H5B	 S-24PTB1H5B	 U-24PNB1H5
30,000	 S-30PFB1H5B	 S-30PTB1H5B	 U-30PNB1H5
36,000	 S-36PFB1H5B	 S-36PTB1H5B	 U-36PNB1H8
48,000	 S-48PFB1H5B	 S-48PTB1H5B	 U-48PNB1H8
60,000	 S-60PFB1H5B	 S-60PTB1H5B	 U-60PNB1H8

# Panasonic

## SINGLE-SPLIT PACKAGED AIR CONDITIONERS 2024/2025

# Fresh series



Do not add or replace refrigerant other than the specified type. Manufacturer is not responsible for the damage and deterioration in safety due to usage of other refrigerant.



### Panasonic Air-conditioning Malaysia (PACMY) Customer Call Centre

A Division of Panasonic Malaysia Sdn. Bhd.  
Lot 10, Japan 13/2, 46200 Petaling Jaya, Selangor Darul Ehsan  
Tel: +603-7932 4189 Fax: +603-7932 4181  
Email: aircon.cs@my.panasonic.com  
www.panasonic.com/my

Website will be opened in Apr. 2024

SEA\_PACNONINV R32\_LL\_2024



## QUALITY AIR FOR LIFE

NON-INVERTER



# CEILING & CONSOLE

- The slim design makes thickness only 235mm.



A Wireless remote controller is in the same package with the indoor unit.

CZ-RWCB1H (Wireless)



(Optional)

CZ-RTCB1H (Wired)

NON-INVERTER



Capacity [ Btu/h ]		18,000	24,000	30,000	36,000	48,000	60,000
Power Source	V/Phase/Hz	220-240V~, 1phase, 50Hz			380-415V~, 3phase, 50Hz		
Indoor		S-18PTB1H5B	S-24PTB1H5B	S-30PTB1H5B	S-36PTB1H5B	S-48PTB1H5B	S-60PTB1H5B
Outdoor		U-18PNB1H5	U-24PNB1H5	U-30PNB1H5	U-36PNB1H8	U-48PNB1H8	U-60PNB1H8
Cooling Capacity: Rated	kW	5.28	7.03	8.79	10.55	14.07	17.58
	Btu/h	18,000	24,000	30,000	36,000	48,000	60,000
Current	A	8.00	10.40	12.50	6.69	8.35	10.00
Power Input: Rated	kW	1.76	2.34	2.74	3.6	4.67	5.71
Efficiency Ratio	COP	3.00	3.00	3.21	2.93	3.01	3.08
	EER [Btu/h]/W	10.24	10.25	10.95	10.00	10.28	10.50
<b>Indoor Unit</b>							
Air Volume (Hi/Mi/Lo)	m <sup>3</sup> /min	15.8/11.6/9.3	18.3/13.3/11	25.3/21/13.3	25.3/21/13.3	35.8/31.6/22.5	35.8/31.6/22.5
	cfm	558/410/328	646/470/388	893/742/470	893/742/470	1,264/1,116/795	1,264/1,116/795
Sound Pressure Level [Hi/Mi/Lo]	dB [A]	44/38/33	46/40/35	50/46/42	50/46/42	52/47/43	52/47/43
Sound Power Level [Hi/Mi/Lo]	dB [A]	52/46/41	56/50/45	59/55/51	59/55/51	62/57/53	62/57/53
Dimension (HxWxD)	Indoor	mm	235×1,000×690	235×1,000×690	235×1,280×690	235×1,280×690	235×1,600×690
	Indoor Package	mm	325×1,080×770	325×1,080×770	325×1,360×770	325×1,360×770	325×1,680×770
Weight (Net/Gross)	kg	28.0/32.0	29.0/33.0	36.0/42.0	36.0/42.0	41.0/48.0	41.0/48.0
<b>Outdoor Unit</b>							
Sound Pressure Level	dB [A]	53	54	56	56	57	58
Sound Power Level	dB [A]	64	65	66	66	67	68
Dimension (HxWxD)	Outdoor	mm	545×800×315	655×825×310	700×900×350	805×970×395	805×970×395
	Outdoor Package	mm	620×920×400	725×945×435	770×1,020×430	890×1,105×495	890×1,105×495
Weight (Net/Gross)	kg	36.0/39.0	44.0/47.5	53.0/57.0	62.0/66.0	72.0/76.0	93.0/103.0
Piping Connection	Gas Pipe	mm [inch]	12.7 [1/2"]	15.88 [5/8"]	15.88 [5/8"]	15.88 [5/8"]	19.05 [3/4"]
	Liquid Pipe	mm [inch]	6.35 [1/4"]	9.52 [3/8"]	9.52 [3/8"]	9.52 [3/8"]	9.52 [3/8"]
Pipe Length (Max)	m	30	30	30	50	50	50
Elevation Difference	m	20	20	20	30	30	30
Maximum Chargeless Length (Max)	m	5	5	5	5	5	5
Additional Gas	g/m	30	50	50	50	50	50
Operating Range, Outdoor [Min-Max] °C		17-49	17-49	17-49	17-49	17-49	17-49

# CEILING DUCTED

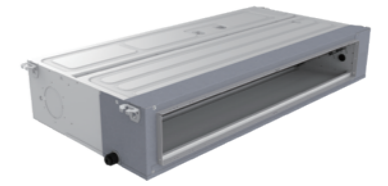
- Air intake from rear as standard.



A Wired remote controller is in the same package with the indoor unit.

CZ-RTCB1H (Wired)

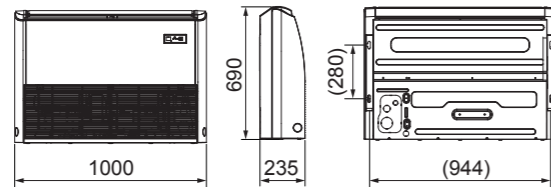
NON-INVERTER



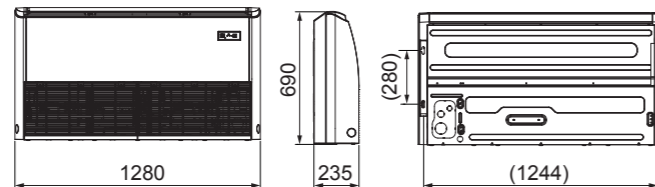
Capacity [ Btu/h ]		18,000	24,000	30,000	36,000	48,000	60,000
Power Source	V/Phase/Hz	220-240V~, 1phase, 50Hz			380-415V~, 3phase, 50Hz		
Indoor		S-18PFB1H5B	S-24PFB1H5B	S-30PFB1H5B	S-36PFB1H5B	S-48PFB1H5B	S-60PFB1H5B
Outdoor		U-18PNB1H5	U-24PNB1H5	U-30PNB1H5	U-36PNB1H8	U-48PNB1H8	U-60PNB1H8
Cooling Capacity: Rated	kW	5.28	7.03	8.79	10.55	14.07	17.58
	Btu/h	18,000	24,000	30,000	36,000	48,000	60,000
Current	A	8.00	10.40	12.50	6.69	8.35	10.00
Power Input: Rated	kW	1.73	2.34	2.74	3.6	4.67	5.71
Efficiency Ratio	COP	3.05	3.00	3.21	2.93	3.01	3.08
	EER [Btu/h]/W	10.41	10.24	10.95	10.00	10.27	10.51
External Static Pressure	Pa	50	50	50	50	80	80
<b>Indoor Unit</b>							
Air Volume (Hi/Mi/Lo)	m <sup>3</sup> /min	15/12.4/7.91	20.6/18.3/16.5	24.8/21.8/20.8	24.8/21.8/20.8	32.1/27.1/24.3	32.1/27.1/24.3
	cfm	530/438/279	727/646/583	876/770/735	876/770/735	1,134/957/858	1,134/957/858
Sound Pressure Level [Hi/Mi/Lo]	dB [A]	35/31/28	39/36/33	41/38/35	41/38/35	44/43/39	44/43/39
Sound Power Level [Hi/Mi/Lo]	dB [A]	43/39/36	47/44/41	51/48/45	51/48/45	54/52/49	54/52/49
Dimension (HxWxD)	Indoor	mm	200×1,000×460	245×1,000×700	245×1,000×700	245×1,000×700	245×1,400×700
	Indoor Package	mm	275×1,300×580	300×1,230×830	300×1,230×830	300×1,230×830	300×1,630×830
Weight (Net/Gross)	kg	24.0/28.0	32.0/37.0	32.0/37.0	32.0/37.0	40.0/47.0	40.0/47.0
<b>Outdoor Unit</b>							
Sound Pressure Level	dB [A]	53	54	56	56	57	58
Sound Power Level	dB [A]	64	65	66	66	67	68
Dimension (HxWxD)	Outdoor	mm	545×800×315	655×825×310	700×900×350	805×970×395	805×970×395
	Outdoor Package	mm	620×920×400	725×945×435	770×1,020×430	890×1,105×495	890×1,105×495
Weight (Net/Gross)	kg	36.0/39.0	44.0/47.5	53.0/57.0	62.0/66.0	72.0/76.0	93.0/103.0
Piping Connection	Gas Pipe	mm [inch]	12.7 [1/2"]	15.88 [5/8"]	15.88 [5/8"]	15.88 [5/8"]	19.05 [3/4"]
	Liquid Pipe	mm [inch]	6.35 [1/4"]	9.52 [3/8"]	9.52 [3/8"]	9.52 [3/8"]	9.52 [3/8"]
Pipe Length (Max)	m	30	30	30	50	50	50
Elevation Difference	m	20	20	20	30	30	30
Maximum Chargeless Length (Max)	m	5	5	5	5	5	5
Additional Gas	g/m	30	50	50	50	50	50
Operating Range, Outdoor [Min-Max] °C		17-49	17-49	17-49	17-49	17-49	17-49

## Dimensions

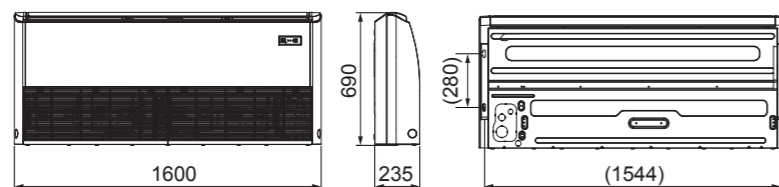
18,000 - 24,000 Btu/h



30,000 - 36,000 Btu/h

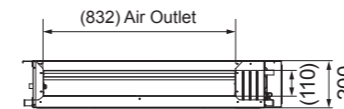


48,000 - 60,000 Btu/h

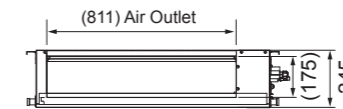


## Dimensions

18,000 Btu/h



24,000 - 36,000 Btu/h



48,000 - 60,000 Btu/h

