

E2 TYPE High Static Ducted



Concealed duct / Air conditioning mode

High static and large airflow ducted for exceptional installation flexibility.



S-180ME2E5 / S-224ME2E5 / S-280ME2E5

Optional accessory



Self-diagnosis
Function



Automatic
Fan
Operation



Dry mode



Automatic
Restart
Function

Technical focus

- Design flexibility thanks to high static pressure and large air volume
- DC motor equipped
- Power input 45% less (compared to E1 type)
- Discharge air temperature control to reduce cold drafts during heating operation
- Configurable air temperature control
- Available Fresh Air Intake mode

3-step static pressure set up

You can select between the three Static Pressure modes of 270 Pa/140 Pa/60(72*) Pa for extra installation flexibility.



* 28 kW model

Max. 270 Pa static pressure setting

A maximum static pressure setting of a high 270 Pa enables the use of long ducts for installation in a wide range of spaces. Ideal for large-scale offices, restaurants and other facilities.

Sensible cooling 5-10% improved

New heat exchanger with ϕ 7mm pipe that increases the heat transfer surface to improve sensible cooling (5-10% improvement)

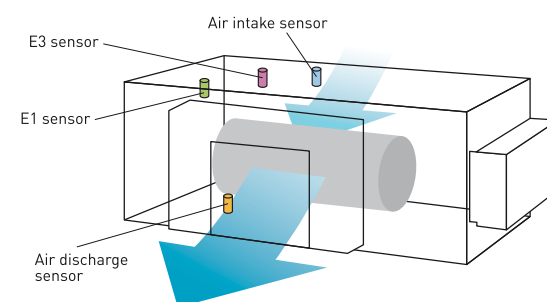
No Rap Valve Kit required

Thanks to improved performance, a Rap Valve Kit (CZ-P160RVK2) is no longer required.



Discharge air temperature control

- Equipped with 4 sensors (Intake/ Discharge)
- Able to control discharge air temperature for accurate room temperature control.
- Possible to reduce cold drafts during heating operation.

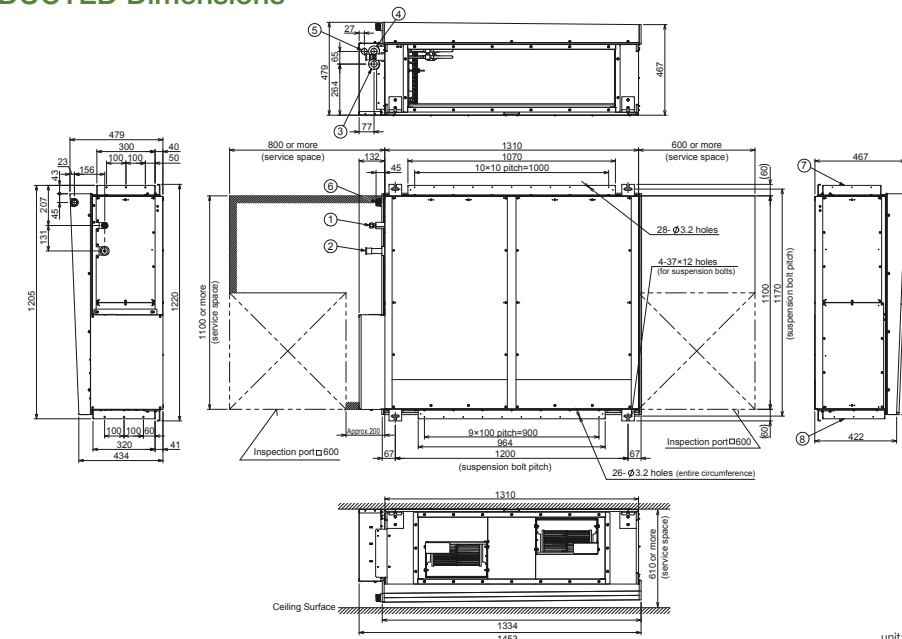


Model Name		S-180ME2E5	S-224ME2E5	S-280ME2E5	
Power source		220/230/240 V, 1 phase - 50 Hz, 220/230 V, 1 phase - 60 Hz			
Cooling capacity	kW	18.0	22.4	28.0	
	BTU/h	61,400	76,400	95,500	
Heating capacity	kW	20.0	25.0	31.5	
	BTU/h	68,200	85,300	107,500	
Power input	Cooling kW	0.400	0.440	0.715	
	Heating kW	0.400	0.440	0.715	
Running current	Cooling A	2.40/2.30/2.20	2.55/2.45/2.35	3.95/3.85/3.70	
	Heating A	2.40/2.30/2.20	2.55/2.45/2.35	3.95/3.85/3.70	
Fan	Type	Sirocco fan			
	Air flow rate (H/M/L)	m ³ /h	2,940/2,640/2,340	3,360/3,060/2,640	4,320/3,780/3,180
		L/s	817/733/650	933/850/733	1,200/1,050/883
	Motor output	kW	0.560 x 2		
	External static pressure	Pa	140 (60/270)		
Sound power level (H/M/L)	dB	76/74/72	77/75/73	81/79/75	
Sound pressure level (H/M/L)	dB(A)	44/42/40	45/43/41	49/47/43	
Dimensions	H x W x D	479 x 1,453 x 1,205			
	Liquid	inches (mm)	Ø9.52 (3/8)		
Pipe connections	Gas	inches (mm)	Ø19.05 (3/4)		
	Drain piping		VP-25		
Net weight	kg	102	102	106	

GLOBAL REMARKS	Rated conditions:	Cooling	Heating
	Indoor air temperature	27°C DB / 19°C WB	20°C DB
	Outdoor air temperature	35°C DB / 24°C WB	7°C DB / 6°C WB

E2 TYPE HIGH STATIC DUCTED Dimensions

- 1 Refrigerant piping (liquid pipes) Ø9.52
- 2 Refrigerant piping (gas pipes)
180 & 224 type: Ø19.05, 280 type: Ø22.22
- 3 Power supply outlet (Ø25 grommet, rubber)
- 4 Power supply outlet (spare) (Ø30 knock-out)
- 5 Optional outlet for piping
- 6 Drain port 25 A, male thread
- 7 Duct connection for suction
- 8 Duct connection for discharge



unit: mm