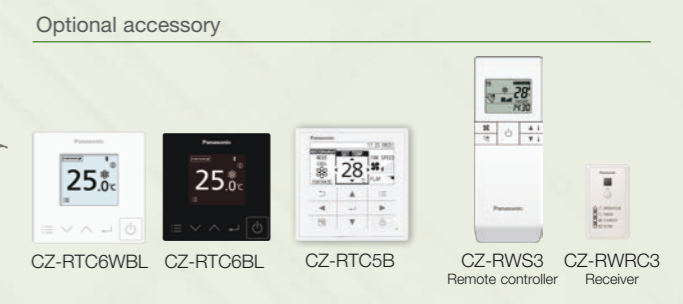


E1 TYPE High Static Ducted Concealed duct

Hidden in the ceiling to provide an ideal match for luxury residences and light commercial buildings.

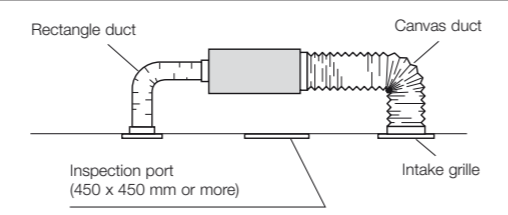


Technical focus

- Complete flexibility for ductwork design
- Can be located into a weatherproof housing for external installation
- Up to 150 pa external static pressure
- Discharge air temperature control to reduce cold drafts during heating operation
- Configurable air temperature control
- Up to 70 L/s air flow

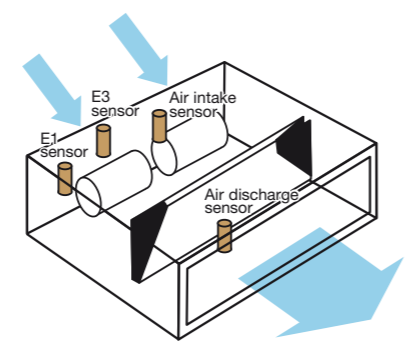
System Example

An inspection port (450 mm x 450 mm or more) is required at the control-box side of the indoor unit body.



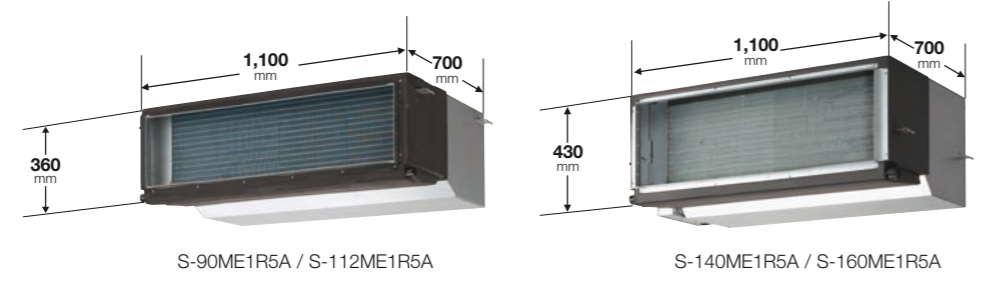
Cold Drafts Reduction at Heating

- Accurate temperature measurement by E1/E3 sensor to reduce cold drafts at heating.



Compact Body Size

Hidden in the ceiling, ideal when interior decor is an important consideration such as in residences with many rooms and light commercial buildings.

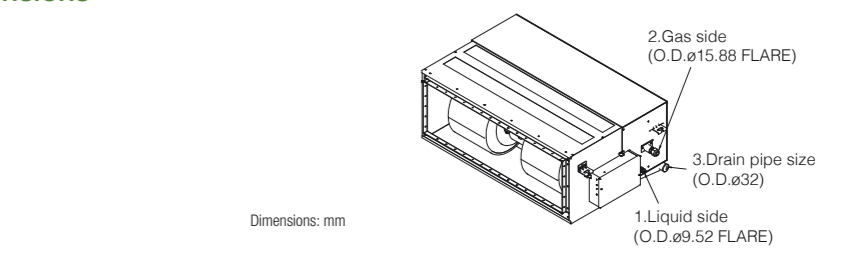
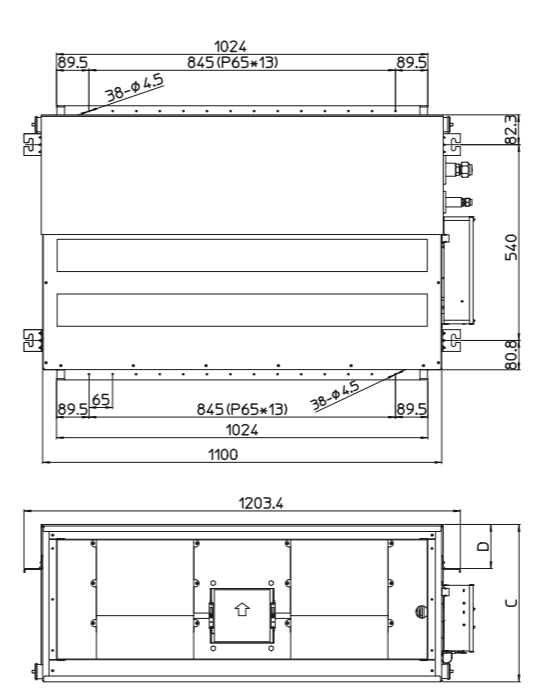


Model Name		S-90ME1R5A	S-112ME1R5A	S-140ME1R5A	S-160ME1R5A
Power source		230/240V, 1 phase - 50Hz			
Cooling capacity	kW	9.0	11.2	14.0	16.0
	BTU/h	30,700	38,200	47,800	54,600
Heating capacity	kW	10.0	12.5	16.0	18.0
	BTU/h	34,100	42,700	54,600	61,400
Power input	Cooling kW	0.275/0.290	0.390/0.410	0.410/0.430	0.590/0.640
	Heating kW	0.275/0.290	0.390/0.410	0.410/0.430	0.590/0.640
Running current	Cooling A	1.24/1.25	1.72/1.74	1.82/1.84	2.62/2.70
	Heating A	1.24/1.25	1.72/1.74	1.82/1.84	2.62/2.70
Fan	Type	Sirocco fan			
	Air flow rate (H/M/L) m³/h	1,800/1,560/1,320	2,400/2,100/1,740	3,000/2,760/2,160	3,600/3,000/2,520
	L/s	500/433/367	667/583/483	833/767/600	1,000/833/700
	Motor output kW	0.155	0.275	0.310	0.44
External static pressure Pa		100 (10-150)			
Sound power level (H/M/L) dB		62/61/60	70/68/66	71/69/67	73/71/69
Sound pressure level (H/M/L) dB(A)		45/44/43	48/46/44	49/47/45	51/49/47
Dimensions H x W x D mm		360 x 1,100(+100) x 700	360 x 1,100(+100) x 700	430 x 1,100(+100) x 700	430 x 1,100(+100) x 700
	Liquid mm (inches)	Ø9.52 (Ø3/8)	Ø9.52 (Ø3/8)	Ø9.52 (Ø3/8)	Ø9.52 (Ø3/8)
Pipe connections Gas mm (inches)		Ø15.88 (Ø5/8)	Ø15.88 (Ø5/8)	Ø15.88 (Ø5/8)	Ø15.88 (Ø5/8)
	Drain piping	VP-25			
Net weight kg		42	44	48	53

GLOBAL REMARKS	Rated conditions:	Cooling	Heating
	Indoor air temperature	27°C DB / 19°C WB	20°C DB
	Outdoor air temperature	35°C DB / 24°C WB	7°C DB / 6°C WB

Specifications are subject to be changed without notice.

E1 TYPE HIGH STATIC DUCTED Dimensions



model	A	B	C	D
S-90ME1R5A S-112ME1R5A	195	35.7	360	50
S-140ME1R5A S-160ME1R5A	260	38.2	430	121.5

