

TEST REPORT

Client : Panasonic Corporation

Purpose : ISTA 7D
Evaluation test for the product & packaging

Laboratory : Japan Business Logistics Co., Ltd.

Issue data : April 1, 2022

Operator : T.Iwahori

Prepared by :



T. Iwahori

Packaging Solutions

Japan Business Logistics Co., Ltd.

Approved by :



K. Omata

Manager of Packaging Solutions


Japan Business Logistics Co., Ltd.

TEST LABORATORY


Japan Business Logistics Co.,Ltd. Packaging Solutions
3, Kirihara-cho, Fujisawa-shi, kanagawa 252-0811 Japan
TEL : +81-0466-41-9884

| | |
|-------------------------|-------------------|
| Revision history | The first edition |
|-------------------------|-------------------|


1. TEST DESCRIPTION

| | |
|----------------------|--|
| Test Purpose | To evaluate the effects of external temperature exposure for the thermal package. |
| Test Specimen | Specimen : VIXELL:AE-V12UXR/AE-V12S4R Package Type : thermal package Packaged Size : 545 x 495 x 450(H) mm Packaged Weight : 23 kg Q'ty : 1 pc Other : |
| |  |
| Test Sequence | Test Standards ISTA 7D -2007 Summer |
| | 1、 Preconditioning (Temperature) for Internal unit 2、 Temperature Cycle test 24 hour domestic small package express freight transport (Air) SUMMER PROFILE (Hot Shipping & Hot Receiving) x 6 times |


Photo



Internal unit



Equipment under the test



Measuring Method

Tr-72nw

Good Center
50mm above the center of the bottom

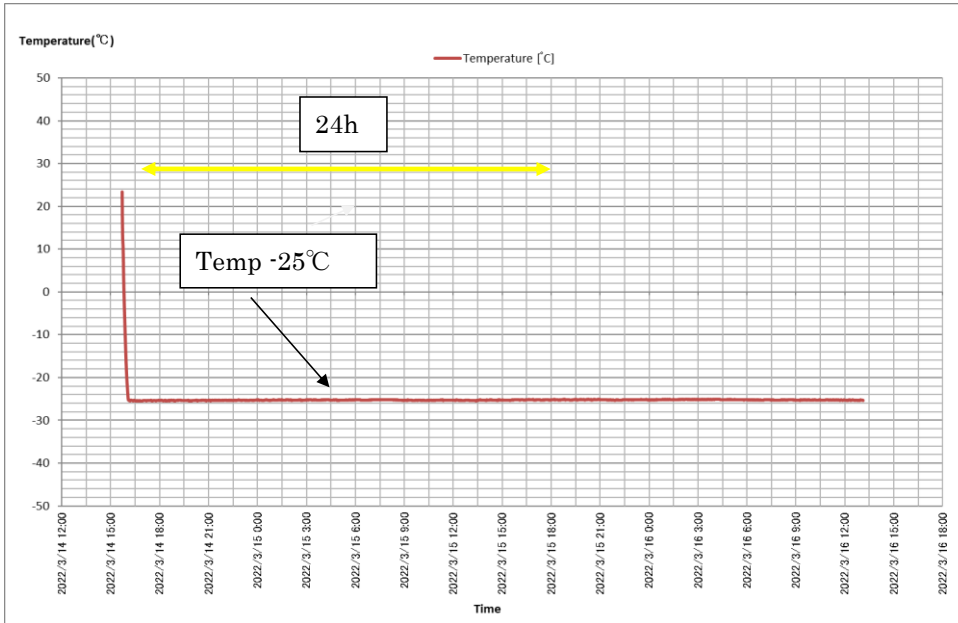
Upper Corner
10 mm away from the wall

3. TEST RESULT

| Test result | |
|---------------------------------|--|
| Package condition after testing | Visual inspection was conducted after all test schedules were completed. No physical damage was found on the product. |
| Product condition after testing | Final inspection will be conducted by Panasonic Corporation |
| Conclusion | Pass/Fail result will be determined after final inspection to be conducted by Panasonic Corporation |

4. TEST DATA

Preconditioning : Internal unit



SUMMER PROFILE Hot Shipping & Hot Receiving

