

# TEST REPORT

**Client :** Panasonic Corporation

**Purpose :** ISTA 7D  
Evaluation test for the product & packaging

**Laboratory :** Japan Business Logistics Co., Ltd.

**Issue data :** April 1, 2022

**Operator :** T.Iwahori

Prepared by :

*T. Iwahori*

T.Iwahori

Packaging Solutions

Japan Business Logistics Co., Ltd.

Approved by :

*K. Omata*

K.Omata

Maneger of Packaging Solutions

Japan Business Logistics Co., Ltd.


## TEST LABORATORY

Japan Business Logistics Co.,Ltd. Packaging Solutions  
3, Kiriara-cho, Fujisawa-shi, kanagawa 252-0811 Japan

TEL : +81-0466-41-9884


<b>Revision history</b>	The first edition
-------------------------	-------------------

**1. TEST DESCRIPTION**


<b>Test Purpose</b>	To evaluate the effects of external temperature exposure for the thermal package.
<b>Test Specimen</b>	Specimen : VIXELL: AE-V06GXR/AE-V06S4R Package Type : thermal package Packaged Size : 480 x 350 x 355(H) mm Packaged Weight : 16 kg Q'ty : 1 pc Other :
	
<b>Test Sequence</b>	Test Standards                      ISTA 7D -2007 Summer
	1、 Preconditioning (Temperature) for Internal unit 2、 Temperature Cycle test 24 hour domestic small package express freight transport (Air) SUMMER PROFILE (Hot Shipping & Hot Receiving) x 6 times




**Photo**



Internal unit



Equipment under the test



Measuring Method

Tr-72nw

Good Center  
50mm above the center of the bottom

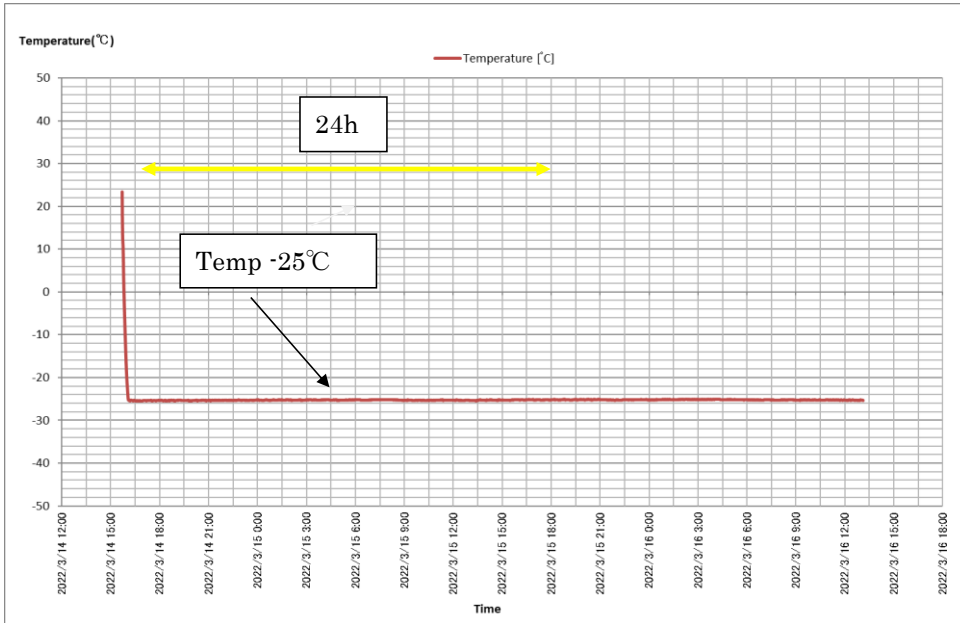
Upper Corner  
10 mm away from the wall

**3. TEST RESULT**

Test result	
Package condition after testing	Visual inspection was conducted after all test schedules were completed. No physical damage was found on the product.
Product condition after testing	Final inspection will be conducted by Panasonic Corporation
Conclusion	Pass/Fail result will be determined after final inspection to be conducted by Panasonic Corporation

**4. TEST DATA**

Preconditioning : Internal unit



SUMMER PROFILE Hot Shipping & Hot Receiving

