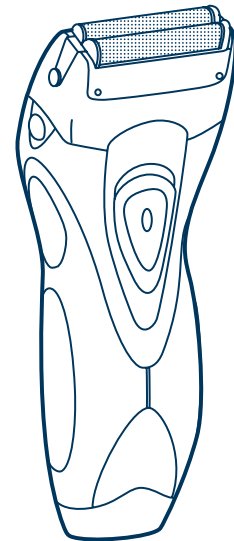


Panasonic®

Operating Instructions Rechargeable Shaver Model No. ES4029



Before operating this unit, please read these instructions completely.

Important

► Before use

This WET/DRY shaver can be used for wet shaving with shaving lather or for dry shaving. You can use this watertight shaver in the shower and clean it in water. The following is the symbol of Wet shaver. The symbol means that the hand-held part may be used in a bath or shower.



Treat yourself to wet lather shaves for at least three weeks and notice the difference. Your Panasonic WET/DRY shaver requires a little time to get used to because your skin and beard need about a month to adjust to any new shaving method.

► Using the shaver

Caution - The outer foil is very thin and can be damaged if not used correctly. Check that the foil is not damaged before using the shaver. Do not use the shaver if the foil etc. is damaged as you will cut your skin.

► Charging the shaver

Do not use any charging adaptor other than one specifically designed for this model (RE7-52). Plug in the adaptor into a household outlet where there is no moisture and handle it with dry hands. The shaver may become warm during use and charging. However, this is not a malfunction. Do not charge the shaver where it will be exposed to direct sunlight or other heat sources. Hold the adaptor when disconnecting it from the household outlet. If you tug on the power cord, you may damage it. If the supply cord of the charging adaptor is damaged, the entire charger should be discarded.

Adequate ambient temperature for charging is 0-40 °C.

► Cleaning the shaver

Warning - Remove the shaver from the charging adaptor before cleaning it to prevent electric shock.

Keep both the inner blades inserted. If only one of the inner blades is inserted, the shaver may be damaged. If you clean the shaver with water, do not use salt water or hot water. Do not soak the shaver in water for a long period of time. Wipe it with a cloth dampened with soapy water. Do not use thinner, benzine or alcohol.

► Storing the shaver

Disconnect the charging adaptor when storing the shaver. Do not bend the power cord or wrap it around the shaver. This appliance is not intended for use by persons (including children) with reduced physical, sensory or mental capabilities, or lack of experience and knowledge, unless they have been given supervision or instruction concerning use of the appliance by a person responsible for their safety. Children should be supervised to ensure that they do not play with the appliance. Keep these operating instructions in a safe place.

SPECIFICATIONS

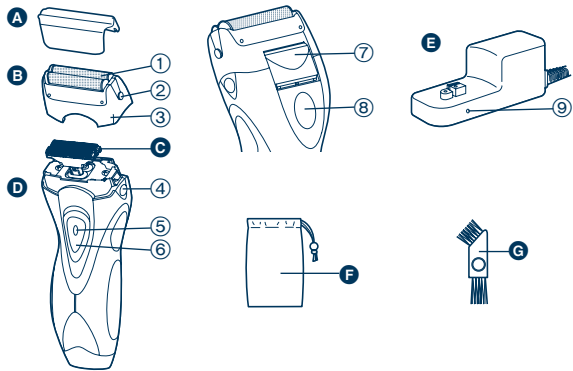
Power source: See the name plate on the product.

Motor voltage: 1.3 V DC

Charging time: 8 hours

This product is intended for household use only.

Parts identification



- A** Protective cap
- B** Outer foil section
 - ① System outer foil
 - ② System outer foil release buttons
 - ③ Foil frame
- C** Inner blades
- D** Main body
 - ④ Foil frame release buttons
- ⑤ Switch lock button
- ⑥ OFF/ON switch
- ⑦ Trimmer
- ⑧ Trimmer handle
- E** Charging adaptor (RE7-52)
 - ⑨ Charge indicator lamp
- F** Travel pouch
- G** Cleaning brush

Charge

Charging

Perform the following steps to charge the shaver if it seems to lose the speed.

You can fully charge the shaver in 8 hours.

- A full charge will supply enough power for approx. 7 shaves of 3 minutes each.

- 1** Turn off the shaver and insert it in the charging adaptor as illustrated.
- 2** Plug in the adaptor into a household outlet.

- The charge indicator lamp glows red and stays on until the shaver is removed from the charging adaptor.



Shave

Using the shaver

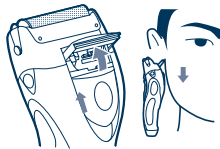


- 1** Depress the switch lock button and slide the OFF/ON switch upwards.
- 2** Hold the shaver as illustrated above and shave.

• Start out shaving by applying gentle pressure to your face. Stretch your skin with your free hand and move the shaver back and forth in the direction of your beard. You may gently increase the amount of pressure as your skin becomes accustomed to this shaver. Applying excessive pressure does not provide a closer shave.

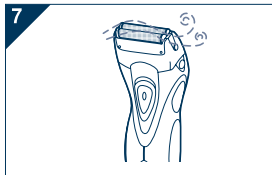
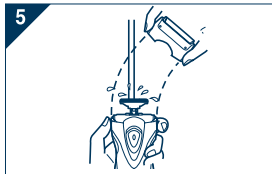
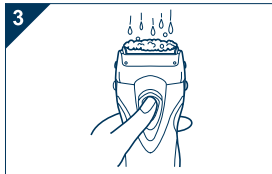
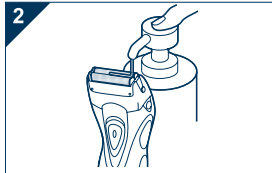
► Using the trimmer

Slide the trimmer handle up. Place at a right angle to your skin and move downwards to trim your sideburns.



Clean

Cleaning

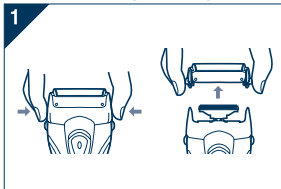


1. Remove the shaver from the charging adaptor.
2. Apply some hand soap to the outer foil.
3. Turn the shaver on and then pour some water over the outer foil.
4. Turn the shaver off after 10-20 seconds.
5. Remove the outer foil section and clean it with running water.
6. Wipe off any drops of water with a dry cloth.
7. Remove the protective cap to allow it to dry completely.

Replacing the system outer foil and the inner blades

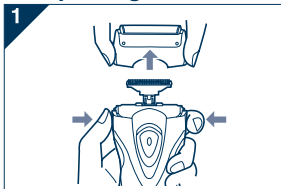
system outer foil	once every year
inner blade	once every two years

► Replacing the system outer foil

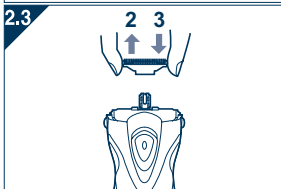


1. Press the system outer foil release buttons and lift the system outer foil upwards as illustrated.
2. Insert the system outer foil by pushing it downwards until it clicks.

► Replacing the inner blades

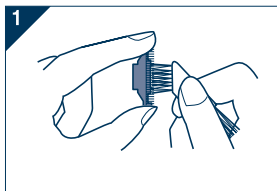


1. Press the foil frame release buttons and lift the outer foil section upwards as illustrated.
2. Remove the inner blades one at a time as illustrated.
 - Do not touch the edges (metal parts) of the inner blades to prevent injury to your hand.



3. Insert the inner blades one at a time until they click as illustrated.

Cleaning with the brush

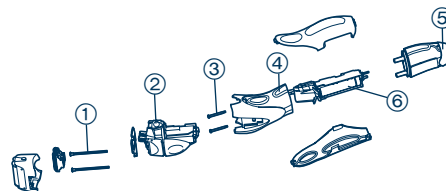


1. Clean the inner blades using the short brush by moving it in direction.
Clean the system outer foil, the shaver body and the trimmer using the long brush.
 - Do not use the short brush to clean the outer foils.

Removing the built-in rechargeable battery

Remove the built-in rechargeable battery before disposing of the shaver. Please make sure that the battery is disposed of at an officially designated location if there is one. Do not dismantle or replace the battery so that you can use the shaver again. This could cause fire or an electric shock. Replace it at an authorized service center.

- Remove the shaver from the charging adaptor when removing the battery.
- Perform steps ① to ⑥ and lift the battery, and then remove it.



For environmental protection and recycling of materials

This shaver contains a Nickel-Metal Hydride battery. Please make sure that the battery is disposed of at an officially assigned location, if there is one in your country.

Panasonic Electric Works Wanbao (Guangzhou) Co., Ltd.

Wanbao Base Shiguang Road, Panyu District, Guangzhou, Guangdong, 511495 CHINA