

Panasonic®

USER'S MANUAL

Smart Pet Feeder

Model No. CP-JNF01

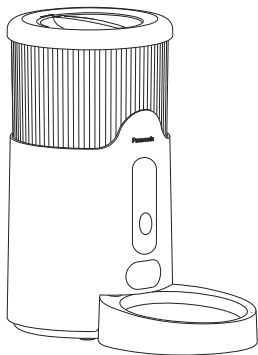


Table of Contents

Precaution for Use	2
Parts Information	4
Installation Instructions	5
Instructions for Use	8
Washing Instructions	10
Indicator Status Description / Troubleshooting	11
Connect to the APP	12
APP - Setting Up Feeding Plan	13
APP - Shared Device	14
APP - Disconnect the Feeder Distribution Network ...	15
Specifications	16
Package Contents	17

Panasonic reserves the right of final interpretation of the instruction manual.

REGISTER NOW



UPDATES



TIPS



NEWS



OFFERS

www.panasonic.com/mypanasonic

Thank you for purchasing this product.

For optimum performance and safety please read these instructions carefully.
Please keep this manual for future reference.

Precaution for Use

Read this product manual carefully before use. Once installed or used, it means that you have carefully read and accepted the following safety instructions. Our company is not responsible for any accidental losses and will not assume any legal responsibility caused by violation operations.

WARNING

- If the product is abnormal, please stop using the product immediately and unplug the adaptor.
- Please use in indoor environment and keep away from fire.
- Pets biting wires may cause electricity leakage, please guide your pets do not do so.
- Please stay away from other electrical equipment when using it to prevent damage caused by accidental water splashing.
- The product contains small parts, take care to prevent accidental swallowing.
- AC adaptor
 - To reduce the risk of fire, electric shock or product damage,
 - Insert the mains plug fully into the socket outlet.
 - Do not pull, bend, or place heavy items on the lead.
 - Do not handle the plug with wet hands.
 - Hold onto the mains plug body when disconnecting the plug.
 - Do not use a damaged mains plug or socket outlet.
 - The mains plug is the disconnecting device.
Install this unit so that the mains plug can be unplugged from the socket outlet immediately.
- Unit
 - To reduce the risk of fire, electric shock or product damage,
 - Do not let water or other liquids drip or splash inside the unit.
 - Do not expose accessories (battery pack, battery charger, AC adaptor, SD memory card etc.) to rain, moisture, dripping or splashing.
 - Do not place objects filled with liquids, such as vases, on accessories.
 - Use the recommended accessories.
 - Do not remove covers.
 - Do not repair this unit by yourself.
Refer servicing to qualified service personnel.
 - This appliance is not intended for use by persons (including children) with reduced physical, sensory or mental capabilities, or lack of experience and knowledge, unless they have been given supervision or instruction concerning use of the appliance by a person responsible for their safety.
 - Children should be supervised to ensure that they do not play with the appliance.
 - This appliance must be used only with the AC adaptor supplied with the appliance.

Precaution for Use

CAUTION

- Do not place this product in a high place to prevent product damage or pet safety issues from falling. At the same time, in order to prevent pets knocking down the product, it is recommended to place it in a corner or against a wall.
- Keep it horizontal, do not overturn the product, otherwise it will cause the product working not properly.
- The inner wall of the bucket is washable with water, but the outer wall of the bucket, buttons, base and other components are not washable with water.
- If you want to stop using it, please unplug the power cord first, pour out the water, wash it and dry it before saving.
- If children use this device, please make sure to use it under the guidance of an adult.
- Except for maintenance personnel, other people are not allowed to repair this product, so as to avoid various accidental injuries.
- The product has been tested at the factory, and it is normal for a little water stains on the parts.
- Battery
 - Do not use rechargeable type batteries.
 - Danger of explosion if battery is incorrectly replaced.Replace only with the type recommended by the manufacturer.
 - Mishandling of batteries can cause electrolyte leakage and may cause a fire.
 - Remove the batteries if you do not intend to use the unit for a long period of time or if the unit is to be powered exclusively by AC power. Store in a cool, dark place.
 - Do not heat or expose to flame.
 - Do not leave the battery(ies) in a car exposed to direct sunlight for a long period of time with doors and windows closed.
 - Do not take apart or short circuit.
 - Do not recharge alkaline or manganese batteries.
 - Do not use batteries if the covering has been peeled off.
 - Do not mix old and new batteries.
 - Do not use different types of batteries at the same time.
 - When disposing of the batteries, please contact your local authorities or dealer and ask for the correct method of disposal.

Disposal of Old Equipment

Only for European Union and countries with recycling systems



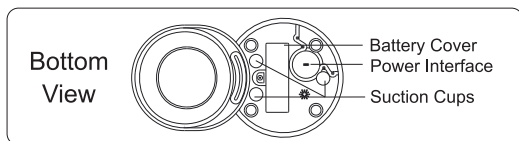
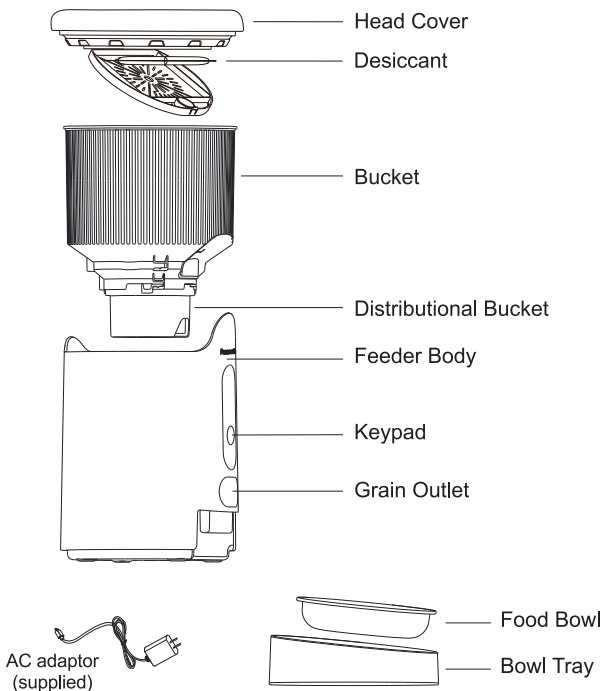
This symbol on the products, packaging, and/or accompanying documents means that used electrical and electronic products must not be mixed with general household waste. For proper treatment, recovery and recycling of old products, please take them to applicable collection points in accordance with your national legislation.

By disposing of them correctly, you will help to save valuable resources and prevent any potential negative effects on human health and the environment.

For more information about collection and recycling, please contact your local municipality.

Penalties may be applicable for incorrect disposal of this waste, in accordance with national legislation.

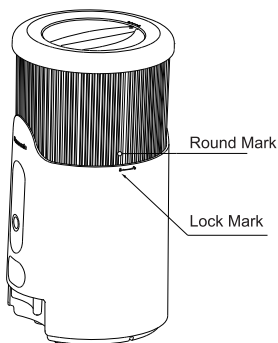
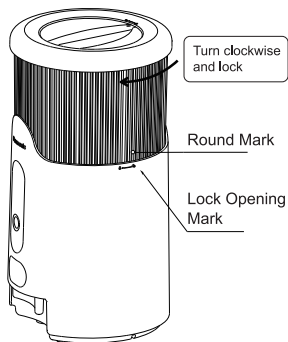
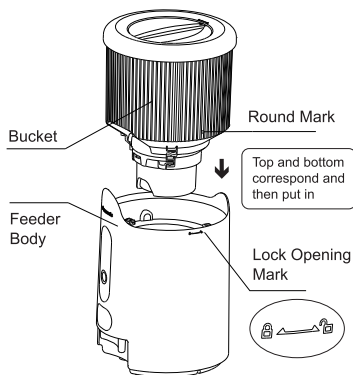
Parts Information



Installation Instructions

1 Install the bucket

Align the round mark on the side of the bucket with the lock opening mark of the feeder body, place the bucket in the feeder body and rotate the bucket clockwise to the lock mark, then the installation is completed.



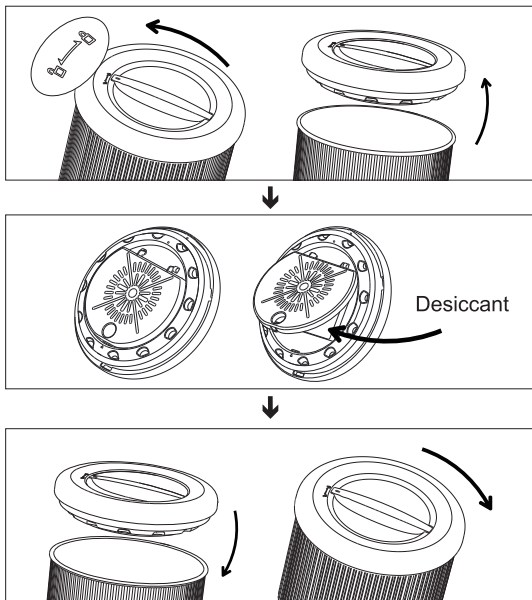
Installation Instructions

2 Install the desiccant

Press the middle position of the handle and turn the top cover counter-clockwise to the unlock mark and lift it up, open the desiccant box and load the desiccant. Reinstall the top cover, press down on the middle of the handle and tighten clockwise to the lock mark.

* It is recommended to replace the desiccant once a month, do not use if it is damaged.

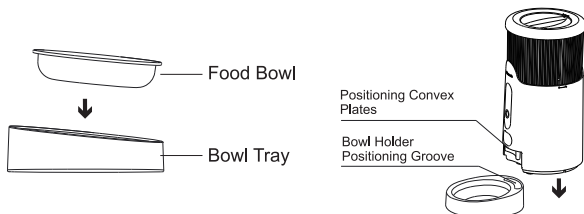
* A generic desiccant can be used. Recommended specifications:
length < 100mm; width < 80mm;



Installation Instructions

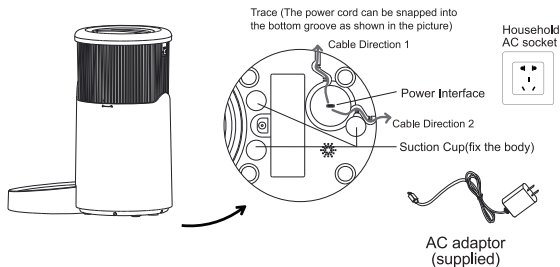
3 Install the bowl

Put the food bowl into the bottom of the bowl holder, and insert the body from top to bottom into the positioning groove of the bowl holder,.



4 Switch on the power supply

Take out the power adaptor, connect it to the power interface at the bottom of the feeder body and turn on the power.



5 Fix feeder body

Press the feeder so that the suction cup at the bottom of the feeder tightly absorbs the ground to ensure that the ground is flat and clean.
(Avoid using on carpets or wet floors)

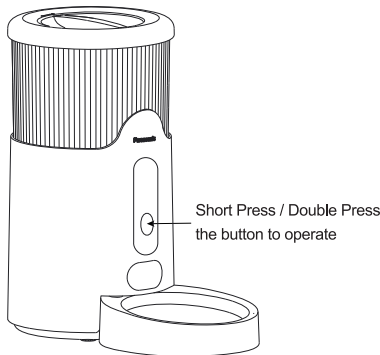
Instructions for Use

● Starting Up

After the power is turned on, the machine enters the standby state. Press and hold the button for 3 seconds. At this time, the buzzer will sound, the white light will flash twice quickly, and the machine will start up and perform self-test. If it is the first use or the first use after restoring the factory settings, the machine will directly enter the normal working state after the power-on self-inspection is completed.

● Shutdown

Press and hold the button for 3 seconds, the buzzer will sound and the ring light will go out.



● Manual Button Control

Short press the button once to turn on or off the ring light.

Press the button twice to deliver 1 portion of food (about 6-8g, depending on the shape and size of dry food, the number of grams per serving may vary).

Instructions for Use

● APP Control

After connecting to the APP, you can set the grain delivery plan in the APP, and the food will be delivered regularly and quantitatively.

(Please refer to P12 for Connect to the APP)

● Restore factory settings in working state

Press and hold the button for 10 seconds, the white light will flash continuously, and the distribution network information and feeding plan will be cleared.

● Battery Powered

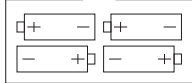
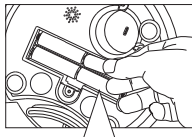
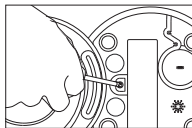
When the feeder is powered by batteries, the WIFI does not work, and the APP cannot be connected. The pet treats can be delivered manually by double-clicking the button, or according to the latest feeding plan previously set.

*Install Backup Batteries

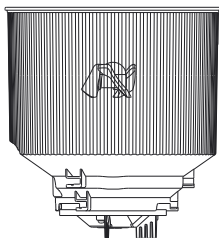
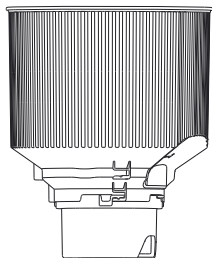
Use a screwdriver to open the battery cover at the bottom of the host, put 4 AA batteries into the battery compartment, put the battery cover back and tighten the screws.

*Reminder:

1. Spare dry batteries need to be purchased by yourself, only alkaline dry batteries are supported (R6P/R6C/R6S/LR6).
2. Make sure the installed battery is fully charged.
3. If the machine will not be used for a long time, please remove all batteries to prevent potential danger caused by battery liquid leakage.



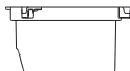
Washing Instructions



1. Take out the grain blender.



2. Rotate and remove the distributional bucket shell.



3. Remove the distributional bucket.

As the Picture Shows:

1. Take down the bucket and unscrew the top cover, rotate and remove the distributional bucket and grain stirring piece at the bottom of the bucket.
2. Clean and wash the bucket, blade, distributional bucket and bowl in turn.
3. After washing and drying, put back and install all parts in turn.

Indicator Status Description / Troubleshooting

Indicator Light Status	Working Status
The indicator light off (power on).	Standby
The white light flashes twice quickly.	Power On Self Test
The white light continue blink rapidly.	Prompt Network distribution
The white light breathing flicker.	Network Distributing
The white light always on.	Normal working condition.
The red light always on.	Barrel is not installed correctly.
The red light flashes slowly.	Treats shortage/ Stuck (Please judge according to the amount of left treats in the bucket).
The red light flashes quickly for 5 seconds (interval 1 hour).	(when the battery is powered) The power is less than 15%.
Power On Self Test	The white light flashes twice quickly, and the buzzer sounds.
Shutdown	The ring light goes out and the buzzer sounds.

Before resorting to maintenance service, please kindly check by yourself with the following chart.

Symptom	Cause(s)	Remedy
No Power	<ul style="list-style-type: none"> The AC adaptor is not connected to the power supply or is not connected to a power supply securely. 	<ul style="list-style-type: none"> Please check that the AC adaptor is connected securely.
The ring light is always red.		Check the bucket is installed correctly.
The ring light flashing red quickly.		Please replace the battery.
The ring light flashing red slowly.		<ol style="list-style-type: none"> Check whether the machine is short of treats, if there is a shortage of treats, please replenish it in time; If there is enough treats in the machine, please take out the bucket to check whether the treats is stuck. After cleaning the blockage, install the material bucket and power on again.
The ring light flashing white slowly.		Power on or off or press and hold the button again for 10 seconds to enter pairing mode.
The feeder cannot connect to the Internet.		<ol style="list-style-type: none"> Check whether the machine is powered normally; Check whether the machine bucket is installed normally; Check if the machine is short of treats/stuck; Check whether the WiFi password is correct; Check whether the WiFi frequency is 2.4GHz, if the WiFi frequency is 5GHz, please try after changing the router.

Connect to the APP

● Connect to the APP

- 1 Search the "Smart Life" APP in major mobile application markets or scan the QR code to download and install it.



- 2 After the installation is completed, register an account and log in to the APP.
- 3 Click "Add Device" on the home page, turn on the phone's Bluetooth and WiFi, and ensure that the feeder is in the network distribution state, and bind the device according to the APP prompt.

*Due to the upgrade and update of the APP, the actual operation may be slightly different from the above description, please operate according to the current guidelines in the APP.
*A feeder can only be connected to one of the APP or the applet. If you need to switch from the APP to the applet or from the applet to the APP, you need to disconnect the distribution network between the APP and the feeder or the connection between the applet and the feeder distribution network.

*Panasonic Corporation assumes no responsibility for data and/or information leakage that occurs during wireless transmission.

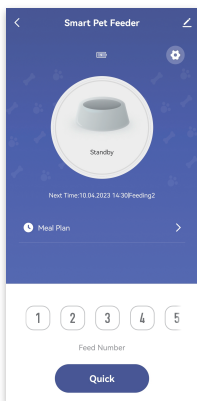
*Android phones are recommended to use Android 9.0 or above; Apple phones are recommended to use iOS 10.0 or above; Hongmeng phones are recommended to use Harmony 2.0 or above.

APP - Setting Up Feeding Plan

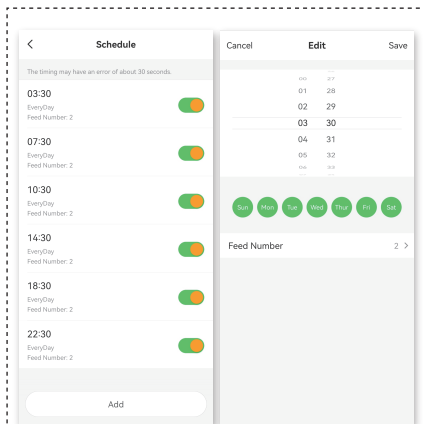
The APP allows users to set up a 7 day meal plan and automatically dispense pet food at scheduled intervals by selecting preferred portion size. (1= small portion & 5 = large portion)

The user can also manually dispense food via the APP at any time.

* The APP user interface may differ from the following visual example due to APP updates.



Select portion size (1 = small portion & 5 = large portion) and manually dispense pet food.

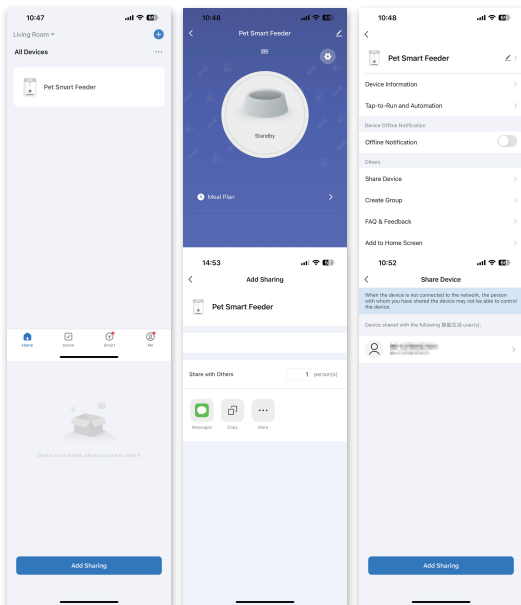


Setup meal plan: select time, date, number of portions, and then 'Add' or 'Save' settings.

APP - Shared Device

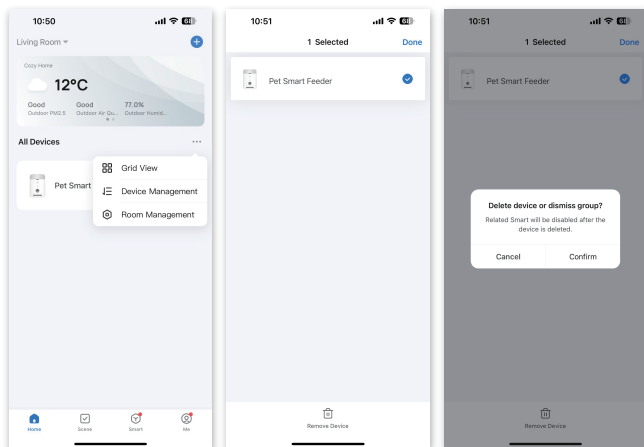
Shared equipment can invite other members to control the feeder through the APP. Select the corresponding feeder on the home page to enter the main feeding interface, click the edit icon in the upper right corner to find the "Shared Device" column, click to enter the shared device page, click "Add Share" to send to other members via SMS, and other members click the invite link Device sharing is now completed.

(Note: The upper limit of sharing is 20 people. If the actual operation does not match the above description, please refer to the actual operation.)



APP - Disconnect the Feeder Distribution Network

To disconnect the distribution network connection between the feeder and the device, click "Home" in the lower left corner, then click "...", in the upper right corner to select the feeder, click "Remove Device" at the bottom, and confirm that the feeder and the device are disconnected from the distribution network open.



Specifications

Power Supply for main unit DC 5.0 V= 1 A

Power Supply for adaptor 100-240 V~ 50/60 Hz 0.25 A

Power Consumption (normal use) 5 W

Power Consumption in standby modes ≤ 1 W

Dimensions (W X H X D)

Unit 190X360X338 mm

Carton Box (individual) 215X215X438 mm

Net Weight 1.86 kg

Working Environment

Temperature 0°C~40°C

Relative Humidity 5%~90%

Bluetooth version V4.2

Bluetooth frequency band 2.402-2.4835 GHz







Bluetooth maximum power 8.9 dBm

Wlan mode IEEE802.11B/G/N20

Wlan frequency band 2.40-2.4835 GHz

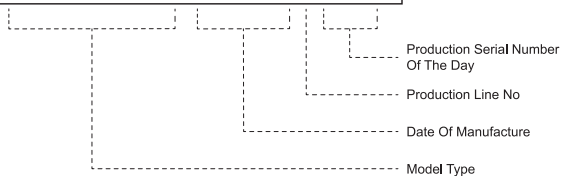
Wlan maximum power 18.2 dBm

Package Contents

Smart Pet Feeder	AC adaptor	User's Manual
 1	 1	 1
Food Bowl	Bowl Tray	Desiccant
 1	 1	 1

Unique Code of Smart Pet Feeder (Example)

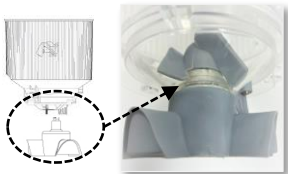
CP-JNF01FW22021810001



Important Information - 1

Recommendation on pet food types and pet food sizes

- i. This product is only applicable to dry pet food, do not use with wet food, otherwise it may cause equipment failure.
- ii. This feeder supports dry pet food up to 12mm in diameter (including freeze dried pet treats).
- iii. Do not exceed the maximum line indication when replenishing pet food in the bucket.
- iv. The difference in shape and size of the dry pet food will cause a variation in the amount of food dispensed per serving.
- v. When assembling the feeder propeller blade, ensure a click sound is heard when pushing into the base. (as shown in the right image)



Alerts will be displayed in your App User Interface (UI) under the following scenarios; if your Smart Pet Feeder is 1) working using AC adaptor power supply, 2) paired to the device, 3) and connected to your network.

Additional warnings include:

i. When pet food is low

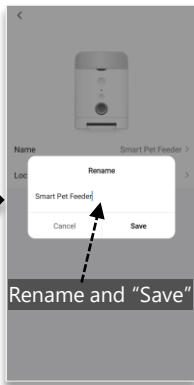
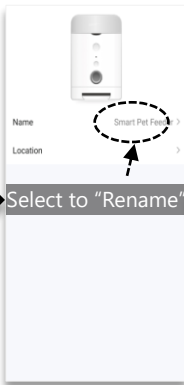
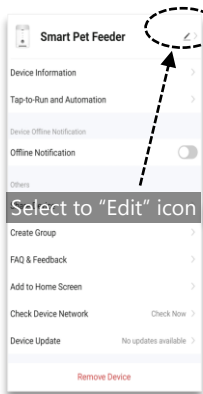
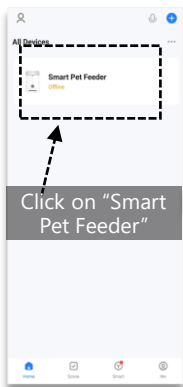


ii. When pet food is jammed



Important Information - 2

Steps below serve as a guide to change the preferred name of your Smart Pet Feeder. The App UI may vary depending on your device and APP version.



Panasonic Appliances(Hangzhou)
(Export Processing Zone) Co.,Ltd.
No.398-1 of Avenue No.18,Baiyang
Street, Qiantang District,
Hangzhou, Zhejiang,China

Web Site: <http://www.panasonic.com>

Version NO.: V1.0