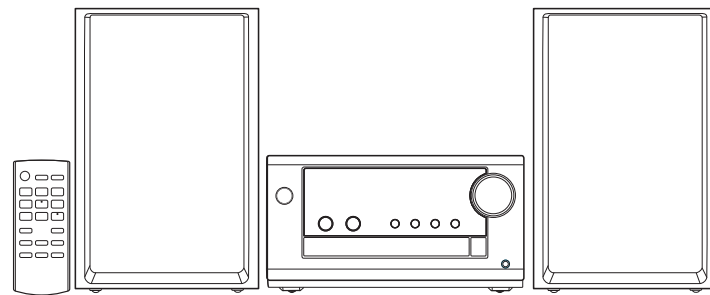


Panasonic®

Basic Operating Instructions

CD Stereo System

Model No. **SC-PM700**



Thank you for purchasing this product.

For optimum performance and safety, please read these instructions carefully.

Please keep this manual for future reference.

This manual contains basic information. Visit website below for detailed instructions.

https://panasonic.jp/support/global/cs/audio/oi/sc_pm700/



Panasonic Entertainment & Communication Co., Ltd.

Web Site: <https://www.panasonic.com>



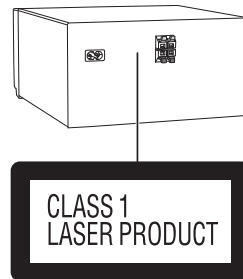
TQBM0892

L0323CH0

© Panasonic Entertainment & Communication Co., Ltd. 2023

Your system and the illustrations can look differently. These operating instructions are applicable to the following system.

System	SC-PM700
Main unit	SA-PM700
Speakers	SB-PM700




The symbols on this product (including the accessories) represent the following:

	AC
	DC
	Class II equipment (The construction of the product is double-insulated.)
	ON
	Standby

Supplied accessories

Check and identify the supplied accessories.

- 1 AC mains leads
- 1 AM loop antenna
- 1 FM indoor antenna
- 
- 1 Remote control (N2QAYB000984)

	Disposal of Old Equipment and Batteries Only for European Union and countries with recycle systems
	These symbols are only valid in the European Union and countries with recycling systems.
	If you wish to discard this product, please contact your local authorities or dealer and ask for the correct method of disposal.

Safety precautions

WARNING!

Unit

- To reduce the risk of fire, electric shock or product damage,
 - Do not expose this unit to rain, moisture, dripping or splashing.
 - Do not place objects filled with liquids, such as vases, on this unit.
 - Use the recommended accessories.
 - Do not remove covers.
 - Do not repair this unit by yourself. Refer servicing to qualified service personnel.

CAUTION!

Unit

- To reduce the risk of fire, electric shock or product damage,
 - Do not install or place this unit in a bookcase, built-in cabinet or in another confined space. Ensure this unit is well ventilated.
 - Do not obstruct this unit's ventilation openings with newspapers, tablecloths, curtains, and similar items.
 - Do not place sources of naked flames, such as lighted candles, on this unit.
- This unit is intended for use in moderate climates.
- This unit may receive radio interference caused by mobile telephones during use. If such interference occurs, please increase separation between this unit and the mobile telephone.
- This unit utilizes a laser. Use of controls or adjustments or performance of procedures other than those specified herein may result in hazardous radiation exposure.

AC mains lead

- The mains plug is the disconnecting device. Install this unit so that the mains plug can be unplugged from the socket outlet immediately.

Battery

- Danger of explosion if battery is incorrectly replaced. Replace only with the type recommended by the manufacturer.
- When disposing of the batteries, please contact your local authorities or dealer and ask for the correct method of disposal.
- Do not heat or expose to flame.
- Do not leave the battery(ies) in a car exposed to direct sunlight for a long period of time with doors and windows closed.
- Avoid the use in the following conditions
 - High or low extreme temperatures during use, storage or transportation.
 - Replacement of a battery with an incorrect type.
 - Disposal of a battery into fire or a hot oven, or mechanically crushing or cutting of a battery, that can result in an explosion.
 - Extremely high temperature and/or extremely low air pressure that can result in an explosion or the leakage of flammable liquid or gas.

Panasonic Warranty

1. Subject to the conditions of this warranty Panasonic or its Authorised Service Centre will perform necessary service on the product, without charge for parts or labour, if in the opinion of Panasonic the product is found to have a manufacturing defect within one (1) year or (12 months) (the "warranty period") from the date of purchase appearing on your purchase receipt.
2. This warranty only applies to Panasonic products purchased in Australia and sold by Panasonic Australia, its Authorised Distributors, or Dealers, and only where the products are used and serviced within Australia or its territories. Warranty cover only applies to the services that are carried out by a Panasonic Authorised Service Centre and only if valid proof of purchase is presented when the warranty service is requested.
3. This warranty only applies if the product has been installed and/or used in accordance with the manufacturer's recommendations (as noted in the operating instructions) under normal use and reasonable care (in the opinion of Panasonic). The warranty does not cover damage, malfunction or failure resulting from use of incorrect voltages, incorrect installation, accident, misuse, neglect, build-up of dirt or dust, abuse, maladjustment of customer controls, mains supply problems, thunderstorm activity, infestation by insects or vermin, tampering or repair by unauthorised persons (including unauthorised alterations), exposure to abnormally corrosive conditions, or any foreign object or matter having entered the product.
4. This warranty does not cover the following items unless the fault or defect existed at the time of purchase:
 - (a) Consumable parts
 - (b) Cosmetic parts
 - (c) Worn or damaged parts
 - (d) Information stored on Hard Disk Drives, Optical Discs, USB Devices, SD Cards, Tapes
 - (e) DTV reception issues caused by TV Aerial / Cabling / Wall socket(s)
5. Some products may be supplied with Ethernet connection hardware. The warranty is limited on such products and will not cover:
 - (a) Internet and or DLNA connection / setup related problems
 - (b) Access fees and or charges incurred for internet connection
 - (c) Incompatible software or software not specifically stipulated in the product operations manual; and
 - (d) Any indirect or consequential costs associated with the incorrect use or misuse of the hardware, its connection to the internet or any other device.
6. To claim warranty service, when required, you should:
 - Contact Panasonic's Customer Care Centre on 132 600 for Service Centre information.
 - Confirm the opening and acceptance times with the Authorised Service Centre that you choose.
 - Then send or take the product to a Panasonic Authorised Service Centre together with your proof of purchase receipt.
 - Any freight and insurance costs associated with the transport of the product to and/or from your nearest Authorised Service Centre must be arranged and paid for by you.
7. The warranties hereby conferred do not extend to, and exclude, any costs associated with the installation, de-installation or re-installation of a product, including costs related to the mounting, de-mounting or remounting of any screen, (and any other ancillary activities), delivery, handling, freighting, transportation or insurance of the product or any part thereof or replacement of and do not extend to, and exclude, any damage or loss occurring by reason of, during, associated with, or related to such installation, de-installation, re-installation or transit.

Panasonic Authorised Service Centres are located in major metropolitan areas and most regional centres of Australia, however, coverage will vary dependant on product. For advice on exact Authorised Service Centre locations for your product, please telephone our Customer Care Centre on 132 600 or visit our website and use the Service Centre Locator.

In addition to your rights under this warranty, Panasonic products come with consumer guarantees that cannot be excluded under the Australian Consumer Law. If there is a major failure with the product, you can reject the product and elect to have a refund or to have the product replaced or if you wish you may elect to keep the goods and be compensated for the drop in value of the goods. You are also entitled to have the product repaired or replaced if the product fails to be of acceptable quality and the failure does not amount to a major failure.

If there is a major failure in regard to the product which cannot be remedied then you must notify us within a reasonable period by contacting the Panasonic Customer Care Centre. If the failure in the product is not a major failure then Panasonic may choose to repair or replace the product and will do so in a reasonable period of time from receiving notice from you.

THIS WARRANTY CARD AND THE PURCHASE DOCKET (OR SIMILAR PROOF OF PURCHASE) SHOULD BE RETAINED BY THE CUSTOMER AT ALL TIMES

If you require assistance regarding warranty conditions or any other enquiries, please visit the **Panasonic Australia** website www.panasonic.com.au or contact by phone on **132 600** *If phoning in, please ensure you have your operating instructions available.*

Panasonic Australia Pty. Limited

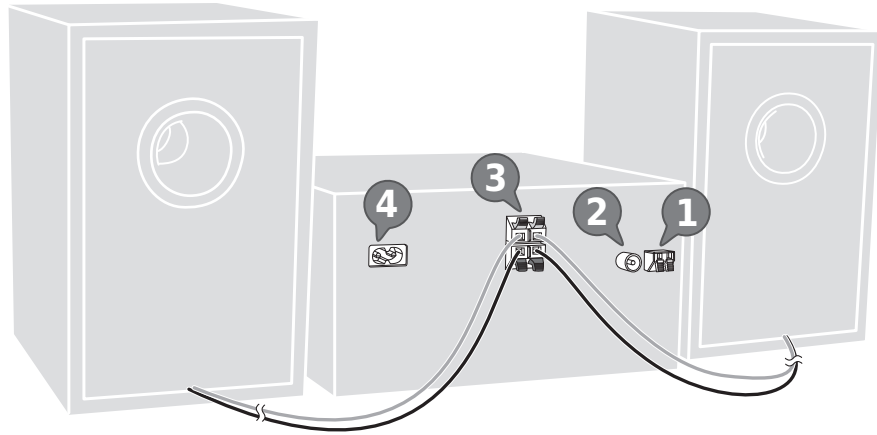
ACN 001 592 187 ABN 83 001 592 187
1 Innovation Road, Macquarie Park, NSW 2113
www.panasonic.com.au

PRO-031-F11 Issue: 5.0

23-01-2018

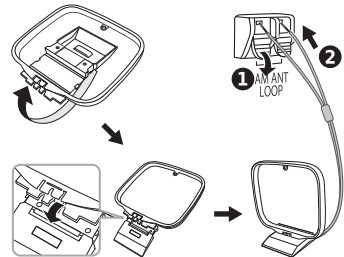
Making the connections

Connect the AC mains lead only after all the other connections have been made.



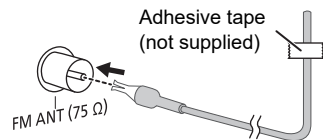
1 Connect the AM loop antenna.

Stand the antenna up on its base until it clicks.

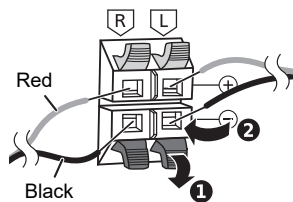


2 Connect the FM indoor antenna.

Put the antenna where reception is best.



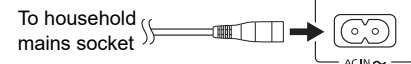
3 Connect the speakers.



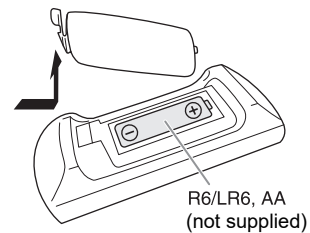
Be careful not to cross (short-circuit) or reverse the polarity of the speaker wires as doing so may damage the speakers.



4 Connect the AC mains lead.



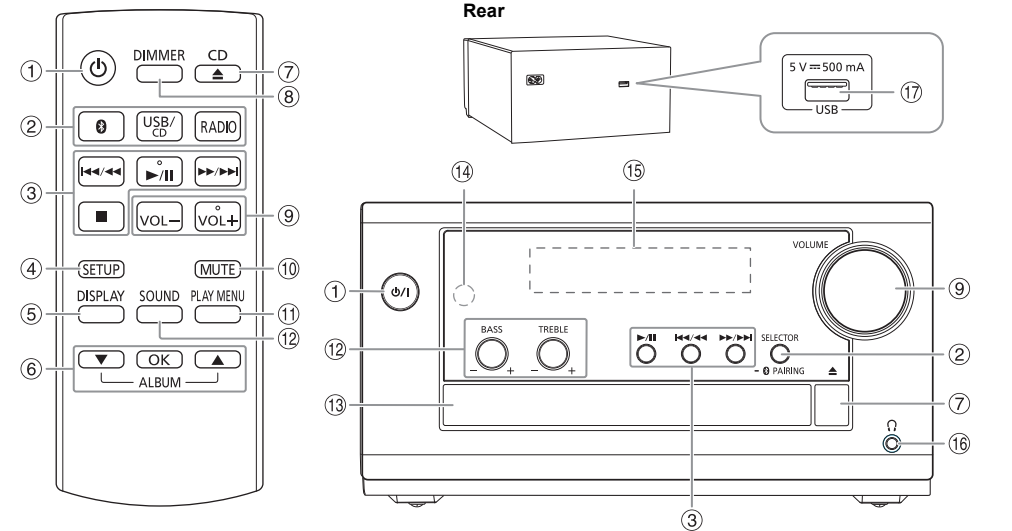
Preparing the remote control



Use alkaline or manganese battery. Install the battery so that the poles (+ and -) align with those in the remote control.

Overview of controls

Do the procedures with the remote control. You can also use the buttons on the main unit if they are the same.



1 Standby/on switch [⏻], [⏻]

Press to switch the unit from on to standby mode or vice versa. In standby mode, the unit is still consuming a small amount of power.

2 Select the audio source

On the main unit:
Press [SELECTOR] repeatedly to select the source:
CD → BLUETOOTH → FM → AM → USB

To start Bluetooth® pairing, press and hold [PAIRING].

3 Basic playback control

Play	Press [▶/⏪].
Stop	Press [■].
Pause	Press [⏸]. Press again to continue playback.
Skip	Press [⏮/⏭] or [⏩/⏪].
Search	Press and hold [⏮/⏭] or [⏩/⏪].

4 View the setup menu

5 View the content information

6 Select and confirm an option

Skip MP3 albums

7 Open or close the disc tray

8 Decrease the brightness of the display panel

To cancel, press the button again.

9 Adjust the volume level

10 Mute the sound

To cancel, press the button again. "MUTE" is also cancelled when you adjust the volume or when you switch off the system.

11 View the play menu

12 Select the sound effects

13 Disc tray

Put in a disc with the label facing up.

14 Remote control sensor

Distance: Within approximately 7 m
Angle: Approximately 10° up and 30° down, 30° left and right

15 Display panel

16 Headphones jack (🎧)

Plug type: Ø 3.5 mm stereo (not supplied)
– Excessive sound pressure from earphones and headphones can cause hearing loss.
– Listening at full volume for long periods may damage the user's ears.

17 USB port (DC 5 V = 500 mA)

Basic operations

Bluetooth®

Preparation

Switch on the Bluetooth® feature of the device and put the device near the system.

Pairing a device

- 1 Press and hold [PAIRING] on the main unit until "PAIRING" is shown.
- 2 Select "SC-PM700" from the Bluetooth® menu of the device.

Connecting a device

- 1 Press [RADIO].
- 2 Select "SC-PM700" from the Bluetooth® menu of the device.
- 3 Start playback on the device.

The Bluetooth® word mark and logos are registered trademarks owned by Bluetooth SIG, Inc. and any use of such marks by Panasonic Holdings Corporation is under license. Other trademarks and trade names are those of their respective owners.

FM/AM Radio

1 Press [RADIO] repeatedly to select "FM" or "AM".

2 Press [PLAY MENU] repeatedly to select "TUNE MODE".

3 Press [▲, ▼] to select "MANUAL" and then press [OK].

4 Press [◀/▶] or [▶/▶] to tune in to the station.

To tune automatically, press and hold the button until the frequency starts changing quickly.