

# Featured Products

Fast and  
Reliable  
Scanners



KV-S8147

KV-S8127

## High-Speed, High-Volume, A3 Scanning

A high-speed, high-volume ADF, which was made possible by advances in image processing technology, has increased the efficiency of processing large numbers of documents.

140 ppm/280 ipm  
(KV-S8147)

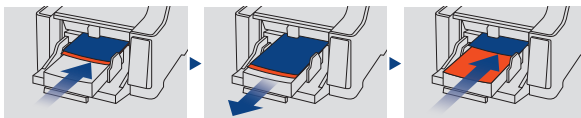
120 ppm/240 ipm  
(KV-S8127)

ADF 750 sheets  
(A4)  
(A3 500 sheets)

## Reliable Paper Feed

### Double Feed Retry\*

If a double feed is detected, the double feed retry function returns the documents to the feed tray automatically. It then separates the double fed documents and scans them again. \*KV-S8147 only.



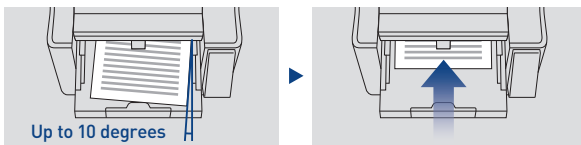
Double feeding is detected.\*  
\*The KV-S8147 has 5 sensors, and the KV-S8127 has 3 sensors for Double Feed Detection.

Documents are returned to the tray.

The double-fed documents are re-fed, separated, and scanned.

### New Mechanical Deskew

The KV-S8147 corrects document skewing up to a maximum of 10 degrees. The sensors have also been increased to five in order to raise the accuracy of detection and de-skewing.



Even if skewed documents enter...

Skewing is reduced mechanically before scanning

Double Efficient  
Flatbed/  
ADF Scanners



KV-SL3066  
KV-SL3056

KV-S7097  
KV-S7077

## Hassle-free ADF/ Flatbed Scanning

Now you can consecutively scan ADF documents and flatbed documents in a single operation and the scanned data is saved as one file. This greatly improves work efficiency.

## Close to Scan

In the manual mode of flatbed scanning using the KV-SL3066 and KV-SL3056, scanning starts automatically by just closing the cover.



Open the flatbed cover.

Place documents on the flatbed glass.

Close the flatbed cover, then scanning starts.

## Small Footprint

The compact size of the flatbed scanners makes them easy to be installed even in small areas in the office.



Combinations of KV-SL1066 and Flatbed option (KV-SS081)

→ Large space is required: 750 mm x 800 mm

KV-SL3066 Only

→ Large space is not required: 800 mm x 300 mm

Space-Saving  
Scanners



A4 Type  
KV-S1037 KV-S2087

A3 Type  
KV-S5076H KV-S5046H

## Various Scanning Options

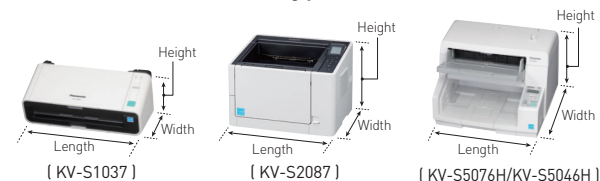
Scanning various documents is made easy for Panasonic's space-saving scanners. There is no more problem when scanning a long paper, passport, bankbook, or even embossed cards at once.



\*Use the carrier sheet (KV-SS077) to scan passport and the mixed batch card guide to scan embossed cards.  
\*Passport, bankbook, and embossed card scanning is only available for the KV-S1037 and KV-S2087.

## Compact Design

Panasonic's space-saving scanners can fit in small and narrow spaces but they are packed with essential features to finish scanning jobs, fast and efficient.



	Paper Size	Length	Width	Height
KV-S1037	A4	303 mm (12.0 in.)	177 mm (7.0 in.)	137 mm (5.4 in.)
KV-S2087	A4	350 mm (13.78 in.)	319 mm (12.56 in.)	242 mm (9.53 in.)
KV-S5076H	A3	468 mm (18.5 in.)	444 mm (17.5 in.)	344 mm (13.5 in.)
KV-S5046H	A3	468 mm (18.5 in.)	444 mm (17.5 in.)	344 mm (13.5 in.)

\*Clearance is required to set the feed tray and exit tray for the KV-S1037 and KV-S2087.

Shareable  
Scanners with  
Built-in  
Network

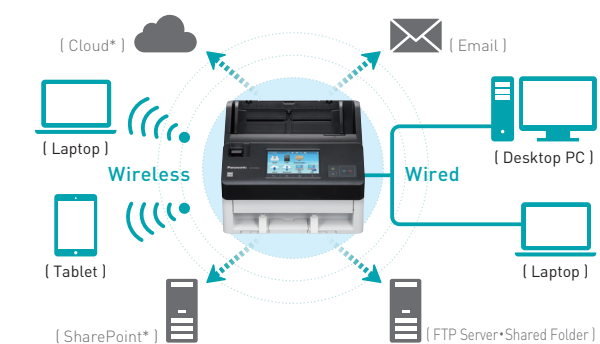


KV-N1058X  
KV-S1037X

KV-N1028X  
KV-S1058Y KV-S1028Y

## Multiple Network Scan Modes

With Panasonic network scanners, users can scan and send data using wired or wireless connection to the desired destinations which include Email, Cloud, SharePoint, and FTP/SMB Server.



\*Users must set up a PC as a scan server in order to perform scan to Cloud and SharePoint.  
\*The wireless LAN connection is not available for the KV-S1058Y and KV-S1028Y.  
\*Wired LAN and wireless LAN connections can not be used simultaneously.

## Convenient Scanning via Smartphone

Image Capture Mobile, a Panasonic original application, lets you send scanned data directly to Cloud or email via smartphone, tablet device, etc. You don't need a PC to scan anymore!



View scanned data in smartphone

Send scanned data to Cloud or email via smartphone

## Accessories

All Panasonic scanner models include:

- ISIS & TWAIN drivers
- Image Capture Plus application software
- Operating manual
- Installation manual (Quick Installation Guide)
- USB cable
- Power Cord

## Optional Flatbed Scanner

- KV-SS081



As an ENERGY STAR® Partner, Panasonic has determined that these products meet the ENERGY STAR guidelines for energy efficiency.

ABBYY®: All products except for the KV-S1015C.

Trademarks and registered trademarks  
 • ENERGY STAR and the ENERGY STAR mark are registered U.S. marks.  
 • ABBYY is a registered trademark of ABBYY Software Ltd.  
 • ISIS is a registered trademark or trademark of EMC Corporation in the United States and other countries.  
 • Wi-Fi, Wi-Fi Direct and the Wi-Fi CERTIFIED logo are registered trademarks or trademarks of Wi-Fi Alliance.  
 • All other brand or product names are the property of their respective holders.

Design and specifications are subject to change without notice.



		Workgroup																			
		Maximum Paper Size: A4																			
Model Series																					
		KV-S1015C		KV-S1026C		KV-S1037		KV-S1037X		KV-S1065C / KV-S1046C		KV-S1057C / KV-S1027C		KV-SL1066 / KV-SL1056		KV-S1058Y / KV-S1028Y		KV-N1058X / KV-N1028X		KV-SL3066 / KV-SL3056	
Binary Speed*1	300 dpi Letter*6 300 dpi A4*6	simplex 20 ppm 20 ppm	duplex 40 ipm (200dpi) 40 ipm (200dpi)	simplex 30 ppm 30 ppm	duplex 60 ipm (200dpi) 60 ipm (200dpi)	simplex 30 ppm 30 ppm	duplex 60 ipm 60 ipm	simplex 30 ppm 30 ppm	duplex 60 ipm 60 ipm	simplex 60 ppm*2 60 ppm*2	duplex 120 ipm (200dpi)*2 120 ipm (200dpi)*2	simplex 65 ppm*3 65 ppm*3	duplex 130 ipm*3 130 ipm*3	simplex 65 ppm*3 65 ppm*3	duplex 130 ipm*3 130 ipm*3	simplex 70 ppm*3 70 ppm*3	duplex 140 ipm*3 140 ipm*3	simplex 70 ppm*3 70 ppm*3	duplex 140 ipm*3 140 ipm*3	simplex 65 ppm*3 65 ppm*3	duplex 130 ipm*3 130 ipm*3
Colour Speed*1	300 dpi Letter*6 300 dpi A4*6	simplex 20 ppm 20 ppm	duplex 40 ipm (200dpi) 40 ipm (200dpi)	simplex 20 ppm 20 ppm	duplex 40 ipm (200dpi) 40 ipm (200dpi)	simplex 30 ppm 30 ppm	duplex 60 ipm 60 ipm	simplex 30 ppm 30 ppm	duplex 60 ipm 60 ipm	simplex 60 ppm*2 60 ppm*2	duplex 120 ipm (200dpi)*2 120 ipm (200dpi)*2	simplex 65 ppm*3 65 ppm*3	duplex 130 ipm*3 130 ipm*3	simplex 65 ppm*3 65 ppm*3	duplex 130 ipm*3 130 ipm*3	simplex 70 ppm*3 70 ppm*3	duplex 140 ipm*3 140 ipm*3	simplex 70 ppm*3 70 ppm*3	duplex 140 ipm*3 140 ipm*3	simplex 65 ppm*3 65 ppm*3	duplex 130 ipm*3 130 ipm*3
Resolution up to		600 dpi		600 dpi		600 dpi, 1200 dpi (Interpolated)		600 dpi, 1200 dpi (Interpolated)		600 dpi		600 dpi, 1200 dpi (Interpolated)		600 dpi, 1200 dpi (Interpolated)		600 dpi, 1200 dpi (Interpolated)		600 dpi, 1200 dpi (Interpolated)		600 dpi, 1200 dpi (Interpolated)	
Interface		USB 2.0		USB 2.0		USB 3.1(Gen1) / 2.0		USB 3.1(Gen1) / 2.0 LAN(1000Base-T/100Base-TX/10 Base-T) Wireless LAN (IEEE802.11n/g/b)		USB 2.0		USB 3.1(Gen1) / 2.0		USB 3.1(Gen1) / 2.0		USB 3.1(Gen1) / 2.0 LAN(1000Base-T/100Base-TX/10 Base-T)		USB 3.1(Gen1) / 2.0 LAN(1000Base-T/100Base-TX/10 Base-T) Wireless LAN (IEEE802.11n/g/b)		USB 2.0	
ADF up to		50 sheets (21 lbs., 80 g/m <sup>2</sup> ) 3 hard cards (ISO 7810 ID-1)		50 sheets (21 lbs., 80 g/m <sup>2</sup> ) 3 hard cards (ISO 7810 ID-1)		50 sheets (21 lbs., 80 g/m <sup>2</sup> ) 3 hard cards (ISO 7810 ID-1)		50 sheets (21 lbs., 80 g/m <sup>2</sup> ) 3 hard cards (ISO 7810 ID-1)		75 sheets (21 lbs., 80 g/m <sup>2</sup> ) 3 hard cards (ISO 7810 ID-1)		100 sheets (21 lbs., 80 g/m <sup>2</sup> ) 3 hard cards (ISO 7810 ID-1)		100 sheets (21 lbs., 80 g/m <sup>2</sup> )*4 3 hard cards (ISO 7810 ID-1)		100 sheets (21 lbs., 80 g/m <sup>2</sup> )*4 3 hard cards (ISO 7810 ID-1)		100 sheets (21 lbs., 80 g/m <sup>2</sup> )*4 3 hard cards (ISO 7810 ID-1)		100 sheets (21 lbs., 80 g/m <sup>2</sup> ) 3 hard cards (ISO 7810 ID-1)	
Paper Sizes		Business Card - Letter / A4		Business Card - Letter / A4		Business Card - Letter / A4		Business Card - Letter / A4		Business Card - Letter / A4		Business Card - Letter / A4		Business Card - Letter / A4		Business Card - Letter / A4		Business Card - Letter / A4		Business Card - Letter / A4	
Passport Scanning (ADF)		—		—		○		○		—		○		○		○		○		○	
Supported OS		Windows, Mac, Linux		Windows, Mac, Linux		Windows, Mac, Linux		Windows, Mac, Linux		Windows, Linux		Windows, Mac, Linux		Windows		Windows, Mac, Linux		Windows, Mac, Linux		Windows, Mac, Linux	
Power Consumption (Scanning/Ready/Sleep/Power OFF)		≤17 W/≤4.5 W/≤1.6 W/≤0.3 W		≤17 W/≤4.5 W/≤1.6 W/≤0.3 W		≤25 W/≤6 W/≤1.6 W/≤0.3 W		≤26 W/≤6 W/≤2.0 W/≤0.3 W		≤25 W/≤8 W/≤1.0 W/≤0.3 W		≤40 W*7/≤8 W/≤3.0 W/≤0.5 W		≤36 W/≤7 W/≤1.8 W/≤0.3 W*8		≤36 W/≤8 W/≤2 W/≤0.3 W*8		≤36 W/≤10 W/≤2 W/≤0.3 W*8		≤40 W*9/≤10 W/≤1.8 W/≤0.5 W	
Weight/Dimensions*15		2.7 kg (5.9 lbs.)/ 303 x 177 x 137 mm (12.0 x 7 x 5.4 in.)		2.7 kg (5.9 lbs.)/ 303 x 177 x 137 mm (12.0 x 7 x 5.4 in.)		2.7 kg (5.9 lbs.)/ 303 x 177 x 137 mm (12.0 x 7 x 5.4 in.)		2.7 kg (5.9 lbs.)/ 303 x 177 x 137 mm (12.0 x 7 x 5.4 in.)		4.0 kg (8.8 lbs.)/ 317 x 209 x 196 mm (12.5 x 8.2 x 7.7 in.)		4.0 kg (8.8 lbs.)/ 300 x 272 x 238 mm (11.8 x 10.7 x 9.4 in.)		4.0 kg (8.8 lbs.)/ 300 x 272 x 238 mm (11.8 x 10.7 x 9.4 in.)		4.0 kg (8.8 lbs.)/ 300 x 272 x 238 mm (11.8 x 10.7 x 9.4 in.)		4.1 kg (9.0 lb.)/ 300 x 272 x 238 mm (11.8 x 10.7 x 9.4 in.)		6.7 kg (14.8 lbs.)/ 300 x 650 x 308 mm (11.8 x 25.6 x 12.1 in.)	

		Departmental				Low-Volume			Mid-Volume			High-Volume									
		Maximum Paper Size: A4		Maximum Paper Size: A3																	
Model Series																					
		KV-S2087		KV-S5055C		KV-S5046H		KV-S7077		KV-S5076H		KV-S7097		KV-S4065CW		KV-S4085CW		KV-S8127		KV-S8147	
Binary Speed*1	300 dpi Letter*6 300 dpi A4*6	simplex 85 ppm 85 ppm	duplex 170 ipm 170 ipm	simplex 90 ppm 90 ppm	duplex 180 ipm (200dpi) 180 ipm (200dpi)	simplex 80 ppm 80 ppm	duplex 160 ipm 160 ipm	simplex 75 ppm 75 ppm	duplex 150 ipm 150 ipm	simplex 100 ppm 100 ppm	duplex 200 ipm 200 ipm	simplex 95 ppm 100 ppm	duplex 190 ipm 200 ipm	simplex 80 ppm 80 ppm	duplex 160 ipm 160 ipm	simplex 100 ppm 100 ppm	duplex 200 ipm 200 ipm	simplex 120 ppm 120 ppm	duplex 240 ipm 240 ipm	simplex 140 ppm 140 ppm	duplex 280 ipm 280 ipm
Colour Speed*1	300 dpi Letter*6 300 dpi A4*6	simplex 85 ppm 85 ppm	duplex 170 ipm 170 ipm	simplex 90 ppm 90 ppm	duplex 180 ipm (200dpi) 180 ipm (200dpi)	simplex 80 ppm 80 ppm	duplex 160 ipm 160 ipm	simplex 75 ppm 75 ppm	duplex 150 ipm 150 ipm	simplex 100 ppm 100 ppm	duplex 200 ipm 200 ipm	simplex 95 ppm 100 ppm	duplex 190 ipm 200 ipm	simplex 80 ppm 80 ppm	duplex 160 ipm 160 ipm	simplex 100 ppm 100 ppm	duplex 200 ipm 200 ipm	simplex 120 ppm 120 ppm	duplex 240 ipm 240 ipm	simplex 140 ppm 140 ppm	duplex 280 ipm 280 ipm
Resolution up to		600 dpi, 1200 dpi (Interpolated)		600 dpi		600 dpi		600 dpi, 1200 dpi (Interpolated)		600 dpi		600 dpi, 1200 dpi (Interpolated)		600 dpi		600 dpi		600 dpi, 1200 dpi (Interpolated)		600 dpi, 1200 dpi (Interpolated)	
Interface		USB 3.1(Gen1) / 2.0		USB 2.0		USB 3.1(Gen1) / 2.0		USB 3.1(Gen1) / 2.0		USB 3.1(Gen1) / 2.0		USB 3.1(Gen1) / 2.0		USB 2.0		USB 2.0		USB 3.1(Gen1) / 2.0		USB 3.1(Gen1) / 2.0	
ADF up to		200 sheets (21 lbs., 80 g/m <sup>2</sup> )		200 sheets (20 lbs., 75 g/m <sup>2</sup> )		300 sheets (21 lbs., 80 g/m <sup>2</sup> )		200 sheets (21 lbs., 80 g/m <sup>2</sup> )*4		300 sheets (21 lbs., 80 g/m <sup>2</sup> )		200 sheets (21 lbs., 80 g/m <sup>2</sup> )*4		350 sheets (21 lbs., 80 g/m <sup>2</sup> )*4		350 sheets (21 lbs., 80 g/m <sup>2</sup> )*4		750 sheets (21 lbs., 80 g/m <sup>2</sup> )*5		750 sheets (21 lbs., 80 g/m <sup>2</sup> )*5	
Paper Sizes		Business Card - Letter / A4		Business Card - Ledger / A3		Business Card - Ledger / A3		Business Card - Ledger / A3		Business Card - Ledger / A3		Business Card - Ledger / A3		Business Card - Ledger / A3		Business Card - Ledger / A3		Business Card - Ledger / A3		Business Card - Ledger / A3	
Passport Scanning (ADF)		○		—		—		—		—		—		—		—		—		—	
Supported OS		Windows, Mac, Linux		Windows		Windows, Linux		Windows, Linux		Windows, Linux		Windows, Linux		Windows		Windows		Windows, Linux		Windows, Linux	
Power Consumption (Scanning/Ready/Sleep/Power OFF)		≤65 W/≤20 W/≤3.0 W/≤0.5 W		1.0 A*10/ 0.4 A*11/≤1.4 W/≤0.5 W		≤90 W/≤30 W/≤1.2 W/≤0.3 W		≤90 W/≤38 W/≤1.4 W/≤0.3 W		≤90 W/≤30 W/≤1.2 W/≤0.3 W		≤90 W/≤38 W/≤1.4 W/≤0.3 W		1.4 A*12/ 0.7 A*13/≤2.0 W/≤0.5 W		1.5 A*14/ 0.7 A*13/≤2.0 W/≤0.5 W		≤140 W/≤35 W/≤2.0 W/≤0.5 W		≤140 W/≤35 W/≤2.0 W/≤0.5 W	
Weight/Dimensions*15		9.0 Kg (19.84 lbs.)/ 350 x 319 x 242 mm (13.78 x 12.56 x 9.53 in.)		18 kg (40 lbs.)/ 468 x 444 x 339 mm (18.5 x 17.5 x 13.4 in.)		17 kg (37.5 lbs.)/ 468 x 444 x 344 mm (18.5 x 17.5 x 13.5 in.)		29 kg (64 lbs.)/ 755 x 508 x 289 mm (29.7 x 20 x 11.4 in.)		17 kg (37.5 lbs.)/ 468 x 444 x 344 mm (18.5 x 17.5 x 13.5 in.)		29 kg (64 lbs.)/ 755 x 508 x 289 mm (29.7 x 20 x 11.4 in.)		25 kg (55 lbs.)/ 474 x 585 x 329 mm (18.7 x 23.0 x 13.0 in.)		25 kg (55 lbs.)/ 474 x 585 x 329 mm (18.7 x 23.0 x 13.0 in.)		44 kg (97 lbs.)/ 545 x 474 x 435 mm (21.46 x 18.66 x 17.12 in.)		44 kg (97 lbs.)/ 545 x 474 x 435 mm (21.46 x 18.66 x 17.12 in.)	

\*1 The scanning speed differs depending on the host computer, the operating system, the application, the measuring method, the quantity of data in the image, and the paper type. The scanning speed is as determined by Panasonic methods of speed measurement. \*2 In the case of the KV-S1046C, Binary/Colour Speed is at 45 ppm for simplex and 90 ipm for duplex. \*3 In the case of the KV-S1027C, KV-S1028Y, KV-N1028X, KV-SL1056, and KV-SL3056, Binary/Colour Speed is at 45 ppm for simplex and 90 ipm for duplex. \*4 A4 / Letter size. \*5 A4 size. \*6 In the case of the KV-S5055C, KV-S5046H, KV-S7077, KV-S5076H, KV-S7097, KV-S4065CW, KV-S4085CW, KV-S8127 and KV-S8147, Binary/Colour Speed is measured in the Landscape. \*7 In the case of the KV-S1027C, the Power Consumption during Scanning is 35 W. \*8 In the case of the KV-S1058Y, KV-S1028Y, KV-N1058X and KV-N1028X, the Power Consumption during Power OFF is 0.3 W or less for AC 100 - 127 V, and 0.5 W or less for AC 220 - 240 V. \*9 In the case of the KV-SL3056, the Power Consumption during Scanning is 37 W. \*10 In the case of the KV-S5055C, the Power Consumption during Scanning is 1.0 A for AC 100 - 120 V and 0.5 A for AC 220 - 240 V. \*11 In the case of the KV-S5055C, the Power Consumption during Ready is 0.4 A for AC 100 - 120 V and 0.2 A for AC 220 - 240 V. \*12 In the case of the KV-S4065CW, the Power Consumption during Scanning is 1.4 A for AC 100 - 120 V and 0.6 A for AC 220 - 240 V. \*13 In the case of the KV-S4065CW and KV-S4085CW, the Power Consumption during Ready is 0.7 A for AC 100 - 120 V and 0.4 A for AC 220 - 240 V. \*14 In the case of the KV-S4085CW, the Power Consumption during Scanning is 1.5 A for AC 100 - 120 V and 0.7 A for AC 220 - 240 V. \*15 Protruding parts are not included.