



# Panasonic®

Operating Instructions  
(Household use) Epilator

Model No. ES-EY80  
ES-EY31

## Contents

|                                    |           |  |           |
|------------------------------------|-----------|--|-----------|
| <b>Safety precautions.....</b>     | <b>3</b>  | <b>Replacing the file.....</b>         | <b>15</b> |
| <b>Important information .....</b> | <b>7</b>  | <b>Replacing the scrub brush .....</b> | <b>15</b> |
| <b>Parts identification .....</b>  | <b>8</b>  | <b>Troubleshooting .....</b>           | <b>16</b> |
| <b>Charging.....</b>               | <b>9</b>  | <b>Battery life.....</b>               | <b>19</b> |
| <b>Before use.....</b>             | <b>9</b>  | <b>Disposal of the appliance .....</b> | <b>19</b> |
| <b>Instructions .....</b>          | <b>10</b> | <b>Specifications .....</b>            | <b>19</b> |
| <b>Cleaning .....</b>              | <b>14</b> |  |           |

Thank you for purchasing this Panasonic product.

**Before operating this unit, please read these instructions completely and save them for future use.**






## Safety precautions

Make sure to follow these instructions.

To prevent accidents, injuries or damage to property, please follow the instructions below.

- **The following chart indicates the degree of damage caused by improper operation.**

|  |  |
|--|--|
|  <b>DANGER</b>  | Indicates potential hazard that will result in serious injury or death.          |
|  <b>WARNING</b> | Indicates potential hazard that could result in serious injury or death.         |
|  <b>CAUTION</b> | Indicates potential hazard that could result in minor injury or property damage. |

### **WARNING**

#### ► **This product**

- **This product has a built-in rechargeable battery. Do not throw into flame or heat. Do not charge, use, or leave in high temperatures.**
  - Doing so may cause overheating, ignition, or explosion.
- **Do not modify or repair.**
  - Doing so may cause fire, electric shock, or injury. Contact an authorized service centre for repair (battery change etc.).
- **Never disassemble except when disposing of the product.**
  - Doing so may cause fire, electric shock, or injury.

#### ► **Power supply**

- **Do not damage or modify, or forcefully bend, pull, or twist the cord. Also, do not place anything heavy on or pinch the cord.**
- **Do not immerse the AC adaptor in water or wash it with water.**
- **Do not place the AC adaptor over or near water filled sink or bathtub.**
  - Doing so may cause electric shock or fire due to a short circuit.
- **Do not connect or disconnect the adaptor to a household outlet with a wet hand.**
  - Doing so may cause electric shock or injury.
- **Do not use in a way exceeding the rating of the household outlet or the wiring.**
  - Exceeding the rating by connecting too many plugs to one household outlet may cause fire due to overheating.
- **Always ensure the appliance is operated on an electric power source matched to the rated voltage indicated on the AC adaptor.**
- **Fully insert the adaptor.**
  - Failure to do so may cause fire or electric shock.
- **Do not use anything other than the supplied AC adaptor for any purpose.**  
**Also, do not use any other product with the supplied AC adaptor. (See page 8.)**
  - Doing so may cause burn or fire due to a short circuit.

## **WARNING**

- ▶ **In case of an abnormality or malfunction**
- **Immediately stop using and remove the adaptor if there is an abnormality or malfunction.**
  - Failure to do so may cause fire, electric shock, or injury.
- **<Abnormality or malfunction cases>**
- **The main body, adaptor or cord is deformed or abnormally hot.**
- **The main body, adaptor or cord smells of burning.**
- **There is abnormal sound during use or charging of the main body.**
  - Immediately request inspection or repair at an authorized service centre.
- ▶ **Preventing accidents**
- **Do not place within reach of children or infants. Do not let them use it.**
  - Doing so may cause an accident or injury due to accidental ingestion of the accessories or removal of small parts.
- **This appliance is not intended for use by persons (including children) with reduced physical, sensory or mental capabilities, or lack of experience and knowledge, unless they have been given supervision or instruction concerning use of the appliance by a person responsible for their safety.**

**Children should be supervised to ensure that they do not play with the appliance.**

  - Failure to do so may cause an accident or injury.
- **The supply cord cannot be replaced. If the cord is damaged, the AC adaptor should be scrapped.**
  - Failure to do so may cause an accident or injury.
- ▶ **Cleaning**
- **Always unplug the adaptor from a household outlet when cleaning.**
  - Failure to do so may cause electric shock or injury.

- **Regularly clean the power plug and the appliance plug to prevent dust from accumulating.**

- Failure to do so may cause fire due to insulation failure caused by humidity.
- Disconnect the adaptor and wipe with a dry cloth.

## **CAUTION**

- ▶ **To protect the skin**

- **The following persons should not use this appliance:**
  - Persons suffering from atopic dermatitis or rashes and other skin diseases
  - Persons with allergic diathesis or persons who are easily irritated by cosmetics, clothing, metals, etc.
  - Persons who are easily suppurated
  - Persons suffering from varicose veins, diabetes, hemophilia, etc.
  - Persons who have trouble stopping bleeding
- Use in such cases may cause the skin to become sensitive or cause inflammation, bleeding, or increased pain.
- **Do not use in the following cases:**
  - During menstruation, pregnancy, or about one month after giving birth
  - When you are not well or when you feel an abnormality in your skin or body
  - After drinking alcohol, taking medicine, or when you are very tired
- Use in such cases may cause the skin to become sensitive or cause inflammation, bleeding, or increased pain.
- **Do not use in the following body areas:**
  - Injury, rash, moles, bruises, warts, pimples, etc.
  - On suntanned skin
- Doing so may cause injury, inflammation of the skin, or bleeding.

## CAUTION

- **Do not use with the frame removed.**
  - Doing so may cause finger injury or cause hair or clothing entanglement and damage.
- **Do not use soap with a scrubbing or peeling effect.**
  - Doing so may cause injury to the skin, color stains or other skin trouble.
- **Always use the epilation head for underarms/bikini-line when epilating your underarms and bikini-line. Do not use the fast cap for legs/arms or the gentle cap for legs/arms.**
  - Failure to do so may cause injury, inflammation, or increased pain.
- **Store the skin protector with care, for that is fragile.**
  - Failure to do so may result in deformation or damage to the skin protector, which may cause injury to skin.
- **Before using, check that the skin protector, disc, frame and brush are free from deformities, cracks, and damage.**
  - Failure to do so may cause injury to the skin.
- **Apply the skin protector and the epilation discs at a 90° angle to your skin with gentle force.**
  - Failure to do so may cause injury to the skin or cause hair or clothing entanglement and damage.
- **If skin problems continue for 2 days or longer after treatment, stop using the appliance and contact a dermatologist.**
  - Failure to do so may cause symptoms to worsen.
- **Turn the switch off when the appliance becomes hot, and use the appliance only after it has cooled.**
  - Failure to do so may cause low temperature burns.

### ► About using the epilation head

- **Do not use in the following body area:**
    - Face, genitals and genital area, or thighs
    - Inner side of the upper arms and areas such as elbows or knees which are prone to sagging
    - Doing so may cause injury, inflammation of the skin, or bleeding.
  - **The following persons should not use this appliance:**
    - Persons who have suffered skin problems (suppuration, inflammation, etc.) caused by epilation (plucking, depilation, waxing, etc.)
    - Use in such cases may cause the skin to become sensitive or cause inflammation, bleeding, or increased pain.
  - **Do not use epilation head in the following ways:**
    - Using just before swimming or sea bathing (use at least 2 days before such activities)
    - Using just before bathing
    - Engaging in extreme sports or exercise right after epilation
    - Doing so may cause infection or inflammation resulting from bacteria that enter the body through the pores.
  - **Do not apply strong pressure to the skin, move repeatedly over the same area or move back and forth in one area. Also, do not use with a jabbing motion.**
    - Doing so may cause injury or inflammation of the skin, or increased pain.
- ### ► About using the foot care head
- **Do not use on blisters and corns.**
    - Doing so may cause injury, inflammation of the skin, or bleeding.

## CAUTION

- **Do not use foot care head in the following ways:**
  - Filing too deeply
  - Letting the file touch soft skin
  - Using the foot care head in the bath
  - Doing so may cause injury to the skin, infection, inflammation, bleeding, other trouble, or worsening of such symptoms.
- **People suffering from poor circulation in the feet; or swelling, itchiness, pain, or excessive warmth in the feet should consult their doctor before using the foot care head.**
- **If skin appears abnormal after filing, stop using the foot care head and consult a dermatologist.**
- **File the hardened skin little by little over a few days.**
- **File only calluses or hardened skin on your feet.**
  - Failure to follow the above instruction may cause injury to the skin, infection, inflammation, bleeding, other trouble, or worsening of such symptoms.
- ▶ **About using the scrub brush**
- **Do not use in the following body area:**
  - Face, throat, genitals and genital areas
  - Doing so may cause injury, inflammation of the skin, or bleeding.
- **Do not use scrub brush in the following ways:**
  - Apply with strong pressure to the skin
  - Use continuously for long periods of time on the same area
  - Doing so may cause injury to the skin, infection, inflammation, bleeding, other trouble, or worsening of such symptoms.
- **Use to remove calluses on the knees or elbows.**
  - Failure to do so may cause injury, inflammation of the skin, or bleeding.

## ▶ **Note the following precautions**

- **Do not share with your family or others.**
  - Doing so may cause infection or inflammation.
- **Do not allow metal objects or trash to adhere to the power plug or the appliance plug.**
  - Doing so may cause electric shock or fire due to a short circuit.
- **Disconnect the adaptor from the household outlet when not charging.**
  - Failure to do so may cause electric shock or fire due to electrical leakage resulting from insulation deterioration.

## Handling of the removed battery when disposing

### DANGER

- **The rechargeable battery is exclusively for use with this appliance. Do not use the battery with other products.**
- **Do not charge the battery after it has been removed from the product.**
- **Do not throw into fire or apply heat.**
- **Do not hit, disassemble, modify, or puncture with a nail.**
- **Do not let the positive and negative terminals of the battery get in contact with each other through metallic objects.**
- **Do not carry or store the battery together with metallic jewellery such as necklaces and hairpins.**
- **Do not use or leave the battery where it will be exposed to high temperatures, such as under direct sunlight or near other sources of heat.**
- **Never peel off the tube.**
  - Doing so may cause overheating, ignition, or explosion.

## **WARNING**

- **After removing the rechargeable battery, do not keep it within reach of children and infants.**
  - The battery will harm the body if accidentally swallowed. If this happens, consult a physician immediately.
- **If the battery fluid leaks out and comes in contact with the eyes, do not rub the eyes, and thoroughly rinse with clean water, such as tap water.**
  - Failure to do so may cause eye injury. Consult a physician immediately.

## **CAUTION**

- **If the battery fluid leaks out and comes in contact with the skin or clothes, rinse off with clean water, such as tap water.**
  - Failure to do so may cause inflammation.

## **Important information**

### ► Using the head of epilation and the brush

The heads and brush can be used when wet.  
The following symbol means suitable for use in a bath or shower.



### ► Using the foot care head

The foot care head is washable.  
The following symbol means that the foot care head can be cleaned under the water.



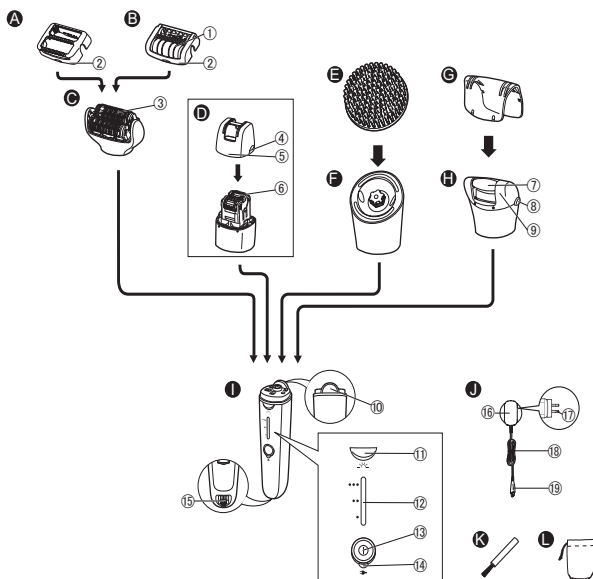
**WARNING:** Detach the main body from the AC adaptor before cleaning it in water.

### ► Notes

- Do not use alcohol or nail polish remover, etc. to clean the appliance. Doing so may cause failure, cracking or discoloration of the main body.
- Keep the appliance away from sinks, bathrooms or other high-humidity areas where it could be exposed to water and moisture after use.
- Keep the appliance away from where it will be exposed to high temperatures or direct sunlight.
- When storing, always attach the protection cap for the foot care head.
- Charge the appliance correctly according to these Operating Instructions. (See page 9 “Charging”.)
- This appliance contains a battery that is only replaceable by skilled persons. Please contact an authorized service centre for the details of repair.
- The following symbol indicates that a specific detachable power supply unit is required for connecting the electrical appliance to the supply mains. The type reference of power supply unit is marked near the symbol.



## Parts identification



- A Fast cap for legs/arms**
  - B Gentle cap for legs/arms**
    - ① Skin protector
    - ② Frame
  - C Epilation head**
    - ③ Epilation discs
  - D Small epilation head for underarms/bikini-line**
    - ④ Frame release ribs
    - ⑤ Frame
    - ⑥ Epilation discs (inside)
  - E Scrub brush**
  - F Brush head**
  - G Protection cap for foot care head**
  - H Foot care head**
    - ⑦ File
    - ⑧ Frame release buttons
    - ⑨ Frame
  - I Main body**
    - ⑩ Head release button
    - ⑪ LED light
    - ⑫ Mode lamps
    - ⑬ Power switch (power off/on/mode selection)
    - ⑭ Charging indication/notification light
    - ⑮ Socket
  - J AC adaptor (RE7-87)**
    - ⑯ Adaptor
    - ⑰ Power plug
    - ⑱ Cord
    - ⑲ Appliance plug
- Accessories
- K Cleaning brush**
  - L Pouch**

| Attachments | A | B | C | D | E | F | G | H |
|-------------|---|---|---|---|---|---|---|---|
| ES-EY80     | ✓ | ✓ | ✓ | ✓ | ✓ | ✓ | ✓ | ✓ |
| ES-EY31     | ✓ |   | ✓ | ✓ |   |   |   |   |



## Charging

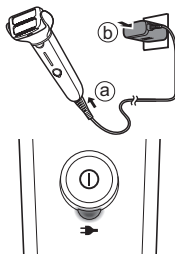
The appliance cannot be used while charging, so make sure to fully charge it ahead of time.

### Charging time: Approx. 1 hour

Epilator run time differs depending on the temperature, but it is generally 30 minutes on a one hour charge (35 minutes with the gentle cap for arms and legs).

#### Plug the AC adaptor into the epilator (a) and a household outlet (b).

Charging indication/notification light (1) (2) glows red while charging, turns off when charged, and blinks twice a second if there is an error.



- Charge the appliance at an ambient temperature of 15 °C – 35 °C. Charging outside this range may result in longer charging times or failure to charge.
- Charging time may change depending on the remaining battery.
- Charging the appliance after each use does not affect the life of the rechargeable battery.
- When charging the appliance for the first time or after 6 months of not being used, charging time may vary. The charging indication/notification light may remain off for a few minutes but will glow eventually.
- If there is noise from the radio or other sources while using or charging the appliance, move to a different location to use the appliance.

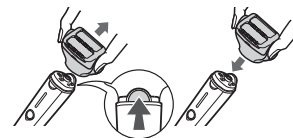
### <Check charging status>

Unplug and then plug the appliance in again while charging to confirm that the charging indication/notification light glows and turns off after 5 seconds.

## Before use

### Removing and attaching the head

Push and hold the head release button to remove the head and push it until it clicks.



### Removing and attaching the scrub brush ES-EY80

#### <Removing>

Holding the brush by its side, remove from the brush head.

#### <Attaching>

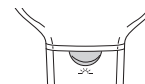
Press firmly until it clicks.



### <LED light>

The LED light glows and remains on when the power is on.

This product has a built-in pressure sensor, and the LED light blinks if you press too hard against your skin.



### <Mode selector>

- There are 3 disc rotation speeds. Try SOFT mode to avoid irritation when removing hairs.
- Press the power switch to switch between ●(SOFT), ●●(NORMAL), ●●●(POWER) and "OFF".
- Select POWER mode when using the foot care head.

#### ●: SOFT

The disc rotates at low speed.

- 1 Mode lamp glows blue.

#### ●●: NORMAL

The disc rotates at standard speed.

- 2 Mode lamps glow blue.

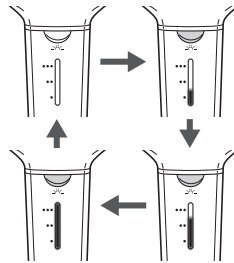
#### ●●●: POWER

The disc rotates at high speed.

- 3 Mode lamps glow blue.

#### OFF

- Turns the appliance OFF.



### <Low battery level>

- The charging indication/notification light [14] blinks once a second.
- Operating time varies depending on usage and temperature after the charging indication/notification light blinks.

## Instructions

### Epilation head

The fast cap and gentle cap for legs/arms should be used only for legs/arms.

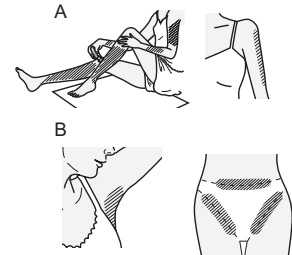
The small epilation head for underarms/bikini-line should be used only for underarms/bikini-line.

#### Areas suitable for epilating

A. Use the fast cap and gentle cap for legs/arms.

B. Use the small epilation head for underarm/bikini-line. Before bikini-line hair removal, put on your swimwear or underwear and check the areas you wish to epilate.

- Using the epilator on non-recommended areas may cause pain or skin trouble.



#### Areas not suitable for epilation

Do not use the epilator on the inner side of the upper arms or areas which are prone to sagging such as elbows or knees.



### <DRY epilation>

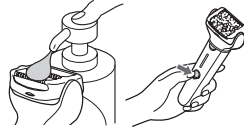
- DRY epilation is recommended. Before DRY epilation, wipe away moisture and sweat from the skin. Next, press the power switch.

### <WET epilation>

- For WET epilation, always use only shower gel. Put the shower gel on the wet discs and turn on the switch to make lather.

Use on sufficiently wet skin. If you notice that some hair is not removed during epilation, try switching to DRY epilation.

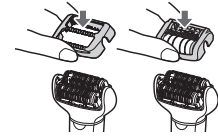
- The pressure sensor works and the LED light may blink depending on the amount and type of shower gel used. Adjust the amount of shower gel or add water to the discs to dilute the foam.
- Foam forms, making the epilator slippery so you can move it quickly.
- The appliance may not operate at an ambient temperature lower than approximately 5 °C.
- Apply the epilator at a 90° angle and slide it slowly over your skin.



### <Epilating legs or arms>



Attach the fast cap or gentle cap for legs/arms.



Slowly move against the flow of hair.



3~5 cm/sec

### <Epilating underarms or bikini-line>

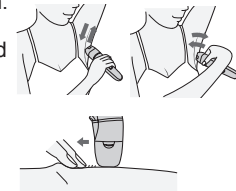


Attach the small epilation head.



Lightly apply the epilator at a 90° angle and ensure close contact with your skin. Do not move the appliance back and forth while applied to the skin.

Lift it away from the skin and change the direction, before moving it. Stretch the skin with your fingers to prevent sagging, and slowly move the appliance against the grain of the hair.



### <Usage frequency>

- Hair removal is not permanent, so it is recommended to epilate the underarms about once a week, and the bikini-line about once every two weeks.

### <For beginners/those with sensitive skin>

- We also recommend to use SOFT mode. (➡ Page 10)
  - Using the gentle cap for legs/arms with the skin guard is best for first time use or for those with sensitive skin.
- The gentle cap for legs/arms has a skin protector for gentle hair removal by holding the skin down to reduce pain.

### <Tips for best results>

- Massaging with a body puff may help prevent ingrown hairs.
- Reddening may occur after use. A cool towel is helpful in case of pain or a rash.
- If your skin is dry, apply moisturizer two days after use.
- Make sure skin is clean before and after use.

### <Best hair length for epilation>

- Trim your hair before first time use or if you have not removed hair for a long time. Hair removal is easier and less painful when the hair is short.

## Foot care head **ES-EY80**

- It is recommended to use the product within 30 minutes after bathing or showering.  
Wipe off any water from clean feet.
- Use within 5 minutes on each foot.

### 1 Attach the foot care head [9].

- Push down firmly until it clicks.

### 2 Select the mode by pressing the power switch [13].

- POWER mode is recommended. (➡ Page 10)

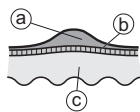
## Foot care basics

Use the product only for filing calluses and hardened skin on the feet.



<Use on>

### Callus



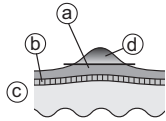
A callus is a hardened layer that forms through repeated pressure or abrasion.

- ① Hardened layer
- ② Epidermis
- ③ Derma

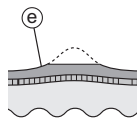
## Precautions when filing

- Filing too large an area can result in larger calluses forming, so be sure to leave some of the hardened layer.

Before use



After use



- Ⓐ Hardened layer
- Ⓑ Epidermis
- Ⓒ Derma
- Ⓓ Portion to be removed
- Ⓔ Leave some of the hardened layer

- Filing a single location for a long time can cause heat due to friction. To avoid this, be sure to make small changes in the filing position while filing.
- Filing an area too deeply can cause it to become sore or inflamed.
- File about once every two weeks.

## Tips for moving the foot care head

Move in the direction indicated by the arrows. Use your free hand for support.



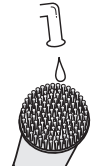
## Scrub brush ES-EY80

- Best if used once per week.
- Best if used on areas needing epilation about 2 days before hair removal. Exfoliation may help prevent ingrown hairs.

### 1 Attach the brush head.

- Push down firmly until it clicks.

### 2 Wet the scrub brush.



### 3 Apply shower gel to your skin.

### 4 Select the mode by pressing the power switch [0/3].

- Best if used on legs, arms (especially elbows and knees) and neckline. Do not use on sensitive areas, face or throat.
- Do not hold in one place. Slide over skin in a circular pattern.
- Apply to the same area of skin for about 30 seconds each time, check your skin and adjust usage accordingly.

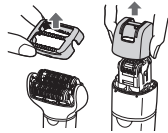


## Cleaning

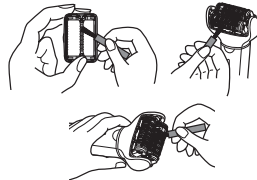
- Always clean the heads and caps after use.
- Switch off and unplug the appliance before cleaning.
- Take care not to damage the skin protector, frame, or caps for legs/arms and for underarms/bikini-line during cleaning.

### Dry cleaning

1. Lift the caps and frame upward while holding the edge of the cap [A/B] or the frame release ribs [D④].



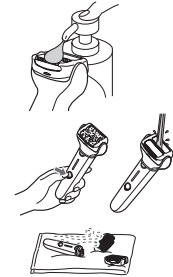
2. Clean the caps [A/B], epilation head [C] and small epilation head for underarms/bikini-line [D] with the cleaning brush [K].



## Wet cleaning

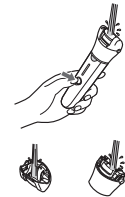
### Epilation head

1. Wet the discs, and then apply liquid hand soap.
2. Turn the switch on to create foam.
3. Rinse away all pieces of hair and dirt.
  - Do not use hot water.
4. Turn the switch off, wipe the appliance with a dry cloth and dry it well.



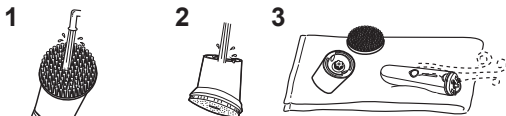
### Foot care head [ES-EY80]

1. Apply liquid hand soap to the centre of the file.
2. Pour a small amount of water on the file and turn on the power.
3. Thoroughly rinse away any debris.
4. Turn off the power, remove the frame, and rinse inside.
5. Wipe dry and air dry in a well-ventilated location.





### Scrub brush / Brush head ES-EY80

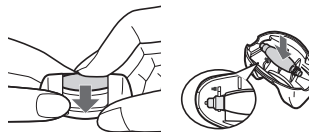
1. Turn on the power and thoroughly rinse debris from the scrub brush.
2. Turn off the power, remove the brush head, and thoroughly rinse the underside of the brush head.
3. Wipe the appliance with a dry cloth and dry it well.
  - To prevent brush deformation, dry it facing upward, and then store it.



### Replacing the file ES-EY80

The file lifetime is about 1 year (assuming a single use of about 10 minutes every 2 weeks). It is best to replace the file about once a year.

1. Press down to release the file.
2. Align the  shaped part with the  mark side and press down.



### Replacing the scrub brush ES-EY80

|             |   |
|-------------|---|
| Scrub brush | once a year<br>(assuming 3 minutes of use per week) |
|-------------|---|

- See page 9 for details regarding brush replacement.

## Troubleshooting

| Problem   | Possible cause   | Action  |
|---|--|---|
| The appliance does not operate.                   | ▶ It is not charged.   | ▶ Fully charge the appliance.   |
|   | ▶ The switch is turned ON with the adaptor connected to the household outlet.          | ▶ Charging is only possible when connected to the household outlet.<br>▶ Disconnect from the household outlet before use. |
|   | <b>When epilating</b> ▶ The skin protector or discs are deformed, cracked, or damaged. | ▶ Request repair at an authorized service centre.   |
|   | <b>When epilating</b> ▶ Hair dust has accumulated.                                     | ▶ Clean the hair dust.  |
|   | ▶ Shower gel has adhered to the discs.   | ▶ Wash it off by soaking in warm water.   |
|   | <b>When caring for feet</b> ▶ The frame is not securely attached.                      | ▶ Reattach it.  |
|   | <b>When exfoliating</b> ▶ Shower gel has adhered to the scrub brush or brush head.     | ▶ Rinse in warm water. If shower gel does not rinse away, remove the scrub brush or brush head and soak in warm water.    |
|   | The usage time gets short.   | ▶ The appliance is used with approximately 5 °C or lower.   |
| ▶ The appliance is pressed against skin too hard. |  | ▶ Contact the skin with gentle force.   |
| ▶ Not charged fully.                              |  | ▶ Fully charge the appliance.   |
| The appliance stops during operation.             | ▶ The appliance is pressed against skin too hard.                                      | ▶ Contact the skin with gentle force.   |
|   | ▶ Not charged fully.   | ▶ Fully charge the appliance.   |



| Problem   |   | Possible cause   | Action   |
|---|---|--|--|
| Cannot remove hair.                                       | <b>When epilating</b>                                       | ▶ The appliance is used on long hair.  | ▶ Use on hair approximately 2 to 3 mm long.                            |
| The hair becomes stubble.                                 |   | ▶ The epilating head surface is not in close enough contact with the skin.   | ▶ Make the epilating head in closer contact with the skin and move.    |
|   |   | ▶ The appliance is not moved against the flow of hair.                       | ▶ Move the appliance against the flow of hair. (Refer to page 11.)     |
| The appliance is not removing the hair as well as before. |   | ▶ The appliance is moved too fast.   | ▶ Move it slowly.<br>(Approximately 3~5 cm/sec)<br>(Refer to page 11.) |
|   |   | ▶ Hair dust has accumulated.   | ▶ Clean the hair dust.   |
|   |   | ▶ The skin protector or discs are deformed, cracked, or damaged.             | ▶ Request repair at an authorized service centre.                      |
|   |   | ▶ The appliance is being pressed too hard against the skin.                  | ▶ Contact the skin with gentle force.                                  |
| Cannot file.  | ▶ The appliance is not applied at a 90° angle to your skin. | ▶ Apply at a 90° angle to your skin.<br>(Refer to page 11.)                  |  |
|   | ▶ The file is worn out.                                     | ▶ Replace the file.<br>▶ Guidelines for replacement:<br>Approximately 1 year |  |
|   |   | ▶ The appliance is used in the SOFT mode.                                    | ▶ Try using it in POWER mode.  |
| Cannot get rid of odor.                                   | ▶ It is dirty.  | ▶ Soak the file in water for approximately 24 hours before washing.          |  |

| Problem  |                         | Possible cause  | Action   |
|--|-------------------------|---|--|
| Does not remove cuticles or dirt sufficiently. | <b>When exfoliating</b> | ▶ Not applying enough pressure to the skin or for a long enough time. | ▶ Adjust degree of pressure and/or amount of time while monitoring the condition of your skin. |
|  |                         | ▶ Brush deterioration from continuous use                             | ▶ Replace the brush.<br>▶ Guidelines for replacement:<br>Scrub brush: once a year              |

If the problems still cannot be solved, contact the store where you purchased the appliance or a service centre authorized by Panasonic for repair.

## Battery life

Approximately 3 years.

If the operating time is significantly shorter even after a full charge, the battery has reached the end of its life. (The battery life may change due to usage and storage conditions.)

The battery in this appliance is not intended to be replaced by consumers. Have the battery replaced by an authorized service centre.

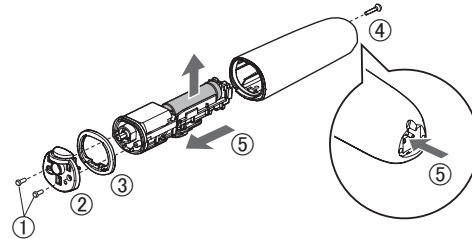
## Disposal of the appliance

**Remove the built-in rechargeable battery before disposing of the appliance.**

- The battery is to be disposed of safely.
- This figure must only be used when disposing of the appliance and must not be used to repair it. If you dismantle the appliance yourself, it will no longer be waterproof, which may cause it to malfunction.

### How to remove the battery

- Remove the appliance from the AC adaptor.
- Press the power switch to turn on the power and then keep the power on until the battery is completely discharged.
- Remove the parts in steps ① to ④, and in step ⑤ push the pins in the socket with a screwdriver, etc. Then lift the battery and remove it.
- Take care not to short circuit the positive and negative terminals of the removed battery, and insulate the terminals by applying tape to them.



### For environmental protection and recycling of materials

This appliance contains a Li-ion battery.

Please make sure that the battery is disposed of at an officially assigned location, if there is one in your country.

## Specifications

|               |   |
|---------------|---|
| Power supply  | See the name plate on the AC adaptor.<br>(Automatic voltage conversion) |
| Charging time | Approx. 1 hour  |

This product is intended for household use only.

Panasonic Corporation  
<https://www.panasonic.com>  
© Panasonic Corporation 2023

Ⓟ EN

Printed in China  
ES9700EY801541 Y0323-0