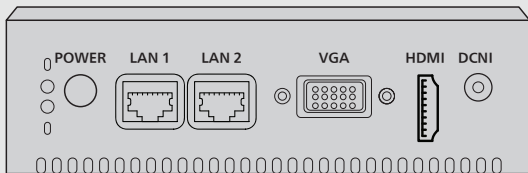


Model Number:
PI- WML2432NP

Quick Start Guide

WIRELESS PRESENTATION SYSTEM



Thank you for purchasing Panasonic product.
Please read these instructions carefully before operating this product and retain them for future reference.

Contents

1	Introduction	1
1.1	Package contents	1
1.2	Trademarks	2
1.3	About the Descriptions in This Manual	2
2	Important information	3
2.1	For your safety	3
2.2	For best performance	3
2.3	About AC adaptor	3
2.4	Other important information	4
2.5	For India only	4
3	Before You Start	5
3.1	Controls	5
3.2	Key Features	6
3.3	Typical Applications	6
3.4	Supported Devices	6
4	Installation and Setup	7
4.1	Installation Pro-Meet	7
4.2	Setup Pro-Meet	7
4.2.1	Connecting Peripherals	7
4.2.2	Connecting Main Display	8
4.2.3	Network Setting	8
4.3	Welcome screen	9
5	Joining a Pro-Meet Meeting	10
5.1	Use the Pro-Meet app for Windows laptops and Mac laptops	10
5.1.1	Download Pro-Meet app from Pro-Meet Web user interface portal	10
5.1.2	Joining a Pro-Meet meeting	11
5.2	Use the Pro-Meet app for tablets and smartphones	11
5.2.1	Download Pro-Meet app from the Google Play Store or App Store	11
5.2.2	Joining a Pro-Meet Meeting	12
5.2.2.1	Joining a Pro-Meet meeting manually	13
5.2.2.2	Joining a Pro-Meet meeting using a QR code	13
5.3	Use iOS/OS X Airplay Service to mirror Mac laptops and iPhones	14
5.4	Use Miracast to mirror compatible Windows and Android	14
5.4.1	Mirroring Windows laptops Using Miracast	15
5.4.2	Mirroring Android Devices Using Miracast	15

Introduction

Outline

This manual describes the information about installation and operation of Pro-Meet.

1.1 Package contents

	
<p>PI-WML2432NP</p>	<p>Antenna x 2</p>

Operating Instructions
Quick Start Guide

Note:
These pictures are only for reference.

1.2 Trademarks

- Microsoft, Windows, are either registered trademarks or trademarks of Microsoft Corporation
- Macintosh®, iPad, iPhone, OS X, macOS and iOS are registered trademarks or trademarks of Apple Inc.
- Intel® is the trademark of Intel Corporation or its subsidiaries.
- Google™ and Android™ are trademarks of Google LLC.
- Wi-Fi and WI-Fi Protected Setup are registered trademark or trademark of Wi-Fi Alliance
- Pro-Meet is the trademark of Panasonic Life Solutions India

All other trademarks identified herein are the property of their respective owners.

1.3 About the Descriptions in This Manual

- Windows refers to the Microsoft Windows operating system (hereafter Windows).

2. Important information

2.1 For your safety

PI-WML2432NP is designed and tested to meet the latest standards of safety for information technology equipment. However, to ensure your safety, it is important that you read the following safety instructions.

Setting up your system

1. Do not use this product near water or a heated source such as a radiator.
2. Set up the system on a stable surface.
3. Openings on the chassis are for ventilation. Do not block or cover these openings. Make sure you leave plenty of space around the system for ventilation. Never insert objects of any kind into the ventilation openings.
4. Use this product in environments with ambient temperatures between -5°C and 60°C.
5. If you use an extension cord, make sure that the total ampere rating of the devices plugged into the extension cord does not exceed its ampere rating.
6. Disconnect the power and unplug the unit from the wall before installing

2.2 For best performance

Use the Pro-Meet unit in the following environment.

- Ensure that the environment (e.g., maximum ambient temperature & air flow) is compatible for the device.
- Avoid uneven mechanical loading.
- The Pro-Meet unit is to be used only inside a building.
- Appropriate consideration of equipment name plate ratings should be used to avoid overloading of the circuits.
- Install the Pro-Meet unit by placing it on a flat surface.

2.3 About AC adaptor

- Do not use an AC adaptor or AC adaptor cable other than those supplied with this product.
- Using an AC adaptor or AC adaptor cable other than those supplied may cause an electric shock or fire due to short circuit or heat generation.
- Clean the power plug periodically to prevent dust from accumulating.
- Failure to do so may cause a fire or electric shock due to moisture.
- Remove the power plug and wipe it with dry cloth.
- Do not insert or remove the power plug with a wet hand.
- Doing so may cause an electric shock.
- Do not use the outlet or wiring devices exceeding rated values or with currents other than 100 - 240 V AC.
- Using them exceeding rated values by connecting too many plugs in one outlet may cause a fire due to heat generation.

- Insert the power plug securely to the end.
- Insufficient insertion may cause a fire due to an electric shock or heat generation.
- Do not use the product with a damaged plug or loose outlet.
- Do not damage the AC adaptor and power plug. by damaging, modifying, forcibly bending, twisting, pulling, or bundling them, bringing them close to heat appliances, placing heavy items on them, etc.
- Doing so may cause a fire or electric shock due to short circuit or disconnection.

2.4 Other important information

We recommend that you:

- Unpack the equipment carefully and save the original box and packaging materials for probable future shipment.
- Review the contents of this user manual.
- You can visit <https://pnsnic.com/promet> to check for up-to-date user manuals, application programs, and to check if firmware upgrades are available (where appropriate).

The illustrations shown may differ from the actual ones.

2.5 For India only

Declaration of conformity with the requirements of the E-waste (management) amendment rules 2022 with the rule 16 (1) limits with respect to let Mercury, cadmium, hexavalent chromium, polybrominated diphenyl ethers.

The content of hazardous substances with the exemption of the applications listed in SHCEDULE II of the E-Waste (management) amendment rules 2023:

1. Lead (Pb) – not over 0.1% by weight.
2. Cadmium (Cd) – not over 0.01% by weight.
3. Mercury (Hg) – not over 0.1% by weight.
4. Hexavalent chromium (Cr6+) – not over 0.1% by weight.
5. Polybrominated diphenyl ethers (PBDEs) – not over 0.1% by weight.



For the purpose of recycling to facilitate effective utilization of resources, please return this product to a nearby authorized collection centre, registered dismantler or recycler, or Panasonic service centre when disposing of this product.

Please see the Panasonic website for further information on collection centres, etc., or call the toll-free number below

Website: <https://www.panasonic.com/in/corporate/e-waste-management.html>

3 Before You Start

3.1 Controls

This is how your Pro-Meet looks.

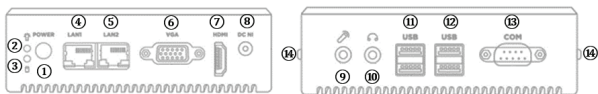


Figure 1: Pro-Meet Panel

#	Feature	Function
1	Power Button	Click to turn on Pro-Meet unit
2	Power LED	Shows power on status (green)
3	Hard Drive LED	Shows Hard drive activity (red blink)
4	LAN RJ-45 Connector 1	Connect to LAN network
5	LAN RJ-45 Connector 2	Connect to LAN network
6	VGA Out Port	Connect to a VGA output acceptor
7	HDMI OUT Connector	Connect to an HDMI acceptor.
8	Power Connector	Connect to the 12V 5A DC power adapter.
9	Audio Output 3.5mm Mini Jack	Connect to earphones or powered speakers. Not in use.
10	Audio Input 3.5mm Mini Jack	Connect to a mic. Not in use
11	USB 3.0 Connectors	Connect to up to two USB devices.
12	USB 3.0 Connectors	Connect to up to two USB devices.
13	COM Port	Connect with a Serial Device
14	Wi-Fi antenna	To extend Wi-Fi range

3.2 Key Features

- Full HD Screen sharing – Share your device screen in Full HD wirelessly (using the Pro-Meet application).
- Airplay and Miracast support.
- Wireless Device Connectivity
- Wireless Connection for up to 254 Devices – Utilizing Compatible External Wireless Network.
- Guest Hotspot.
- DHCP Support.
- Graphic Output Formats – Outputs to either an HDMI or VGA display.
- Whiteboard Support.
- File Sharing – Share files one-to-one or with everyone in the meeting.
- Chat – Send an instant message to another user.
- Show Main Display – Enables participants to share their entire screen and annotate remotely.
- Group Screen Sharing – Allows up to four participants to share their screen simultaneously.
- Collaborate – Collaborations made easy with multi-mode collaboration options including whiteboard, screen sharing, file sharing, and chat with other participants.
- Moderator and DND(Do Not Disturb) Support

3.3 Typical Applications

Pro-Meet is ideal for the following typical applications:

- Boardrooms.
- Conference rooms.
- Presentation rooms.
- Collaboration areas.
- Classrooms and training rooms.

3.4 Supported Devices

The following user devices are supported by the Pro-Meet:

- Windows 10/11® (64-bit) computer or laptop.
- Macintosh® computer or laptop, using OS X 10.12 or later.
- iPad/iPhone® tablet (iOS 14 or later).
 - When using the Airplay service, no Pro-Meet application is needed. However, we recommend using iOS12, Mojave OS X 10.12, or later, for a better experience.
- Android® OS 10 (without audio) and 11(with audio) tablet/smartphone or later.
 - The minimum system requirement for using the Pro-Meet mirroring feature for an Android device is Android OS 10.

4 Installation and Setup

4.1 Installation Pro-Meet

This section provides instructions for the installation of Pro-Meet. Before installing, Pro-Meet must be placed in the correct horizontal position.

4.2 Setup Pro-Meet

Before connecting a device to your Pro-Meet unit, always turn the power off. Plug the device after attaching it to your Pro-Meet unit, and then turn it on to use it.

4.2.1 Connecting Peripherals

For illustration purposes, the diagram shows connections for Pro-Meet.

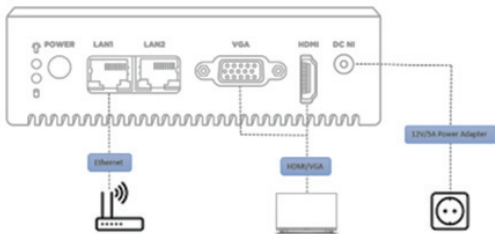


Figure 2 : Connecting to the Pro-Meet Front Panel

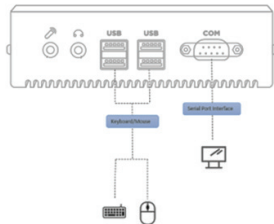


Figure 3 : Connecting to the Pro-Meet Rear Panel

To connect Pro-Meet as illustrated in Figure 2 and Figure 3:

1. Connect the keyboard and mouse to the USB 3.0 Connector on the rear panel.
2. Connect one of the following to be used as the main display for the meeting:
 - HDMI display to the HDMI OUT Connector.
 - VGA display to the VGA Port Connector.
 - Only one display can be connected at a time.
 - A touchscreen display is best for annotation.
3. Connect to your corporate network using the following two methods:
 - Connect to the local Ethernet network using the LAN cable and Ethernet port on the device.
 - To corporate Wi-Fi after whitelisting the device Mac ID.
For full functionality, the Pro-Meet unit must be connected to a local area network (LAN). The default IP setting is DHCP that assigns an automatic IP address to your Pro-Meet unit. This enables easy plug and play setup when connecting your Pro-Meet unit to the network.
4. Connect the AC adapter to the Power Connector and plug it into the mains electricity.

Your Pro-Meet is now connected and ready to use.

4.2.2 Connecting Main Display

The main display for Pro-Meet is directly connected to it, and once Pro-Meet is booted up, the main display will show the Pro-Meet Display Wallpaper screen. This screen also displays all the collaboration activities.

Pro-Meet enables for connecting to two different types of displays:

- HDMI - The HDMI OUT Connector ⑦ can connect to compatible projection or direct-view displays like LED monitors and projectors.
- VGA - The VGA Port Connector ⑥ can connect to VGA displays.

When a display is connected to Pro-Meet, our internal video card will read the Extended Display Identification Data (EDID) and automatically set the best display resolution and image refresh rate through either the HDMI or VGA Ports.

4.2.3 Network Setting

To complete the setup, Pro-Meet should be connected to the LAN. There are two connection types; one uses Ethernet cable, and another uses Wi-Fi.

Please refer to 5.4 Configuring Network Settings to choose the best for your environment.

4.3 Welcome screen

After booting up and setting the necessary configuration correctly, you can see the Welcome screen on the main display.



Figure 4 : Welcome screen

5 Joining a Pro-Meet Meeting

By using one of the following methods, you can join a Pro-Meet meeting.

- Use the Pro-Meet app for Windows laptops and Mac laptops.
- Use the Pro-Meet app for tablets and smartphones.
- Use iOS/OS X Airplay Service to mirror Mac laptops and iPhones.
- Use Miracast to mirror compatible Android and Windows devices.

5.1 Use the Pro-Meet app for Windows laptops and Mac laptops

When using Windows laptops and Mac laptops, the Pro-Meet app enables you to use Pro-Meet for collaborative meetings.

5.1.1 Download Pro-Meet app from Pro-Meet Web user interface portal

Open your preferred web browser on your computer and enter the IP address for your Pro-Meet unit, then the Web user interface portal appears.

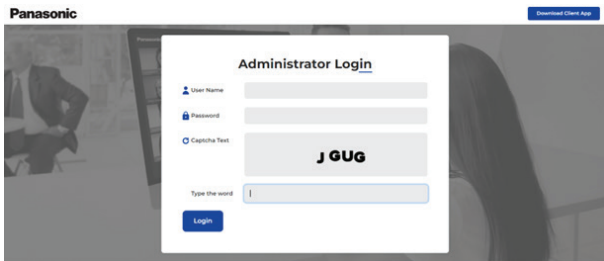


Figure 5: Web user interface portal

On this portal, you can download the Pro-Meet app by clicking on “Download Client App”. After downloading and unzipping the file, you can utilize the Pro-Meet app.

5.1.2 Joining a Pro-Meet meeting

Follow the steps below to manually join a Pro-Meet meeting:

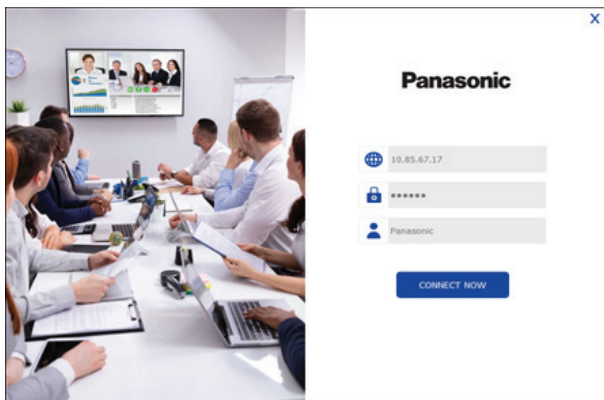


Figure 6: Pro-Meet app screen for laptop

1. Ensure that your device is connected to the same network as your Pro-Meet unit.
2. Launch the Pro-Meet application on your device.
3. Enter the Room IP address, Room PIN, and your name on the application's main screen.
4. Click on the **"CONNECT NOW"** button to join the meeting.
5. You will now be logged into the Pro-Meet meeting, and the Pro-Meet Dashboard will appear on your device screen. For laptops, there will be a taskbar icon.

Note: Some features are only available in Moderator Mode.

5.2 Use the Pro-Meet app for tablets and smartphones

When using tablets and smartphones, the Pro-Meet app enables you to use Pro-Meet for collaborative meetings.

5.2.1 Download Pro-Meet app from the Google Play Store or App Store

Downloading Pro-Meet on Google Play Store(For Android):

1. Open the Google Play Store app on your Android device.
2. Type "Prommeet" in the search bar located at the top of the screen and press enter.
3. From the search results, select the "**Prommeet**" app.
4. Click the "Install" button to begin the download process.
5. Once the download is complete, click the "Open" button to launch the app and you will see the meeting join screen. Use the Room IP address, Room Pin and Guest Name to join an ongoing meeting.

Downloading Pro-Meet on Apple App Store(For iOS):

1. Open the App Store app on your iPhone or iPad.
2. Tap on the search icon located at the bottom of the screen.
3. Type "Prommeet" in the search bar and press enter.
4. From the search results, select the "**Prommeet**" app.
5. Click the "Get" button to begin the download process.
6. If prompted, enter your Apple ID and password to authorize the download.
7. Once the download is complete, click the "Open" button to launch the app and you will see the meeting join screen. Use the Room IP address, Room Pin and Guest Name to join an ongoing meeting.

Note: You will need an internet connection to download the Pro-Meet app. Also, make sure that you have enough space on your device before downloading the app.

5.2.2 Joining a Pro-Meet Meeting

There are two ways for participants to join a Pro-Meet meeting:

- Joining a Pro-Meet meeting manually.
- Joining a Pro-Meet meeting using a QR code.

5.2.2.1 Joining a Pro-Meet meeting manually

Follow the steps below to join a Pro-Meet meeting manually:

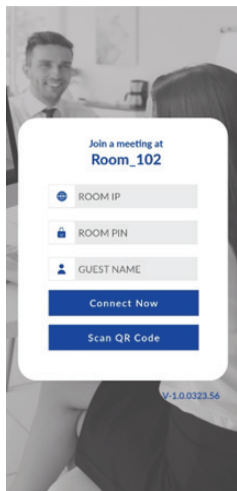


Figure 7: Pro-Meet app for tablet and smartphone screen

1. Ensure that your device is connected to the same network as your Pro-Meet unit.
2. Launch the Pro-Meet application on your device.
3. Enter the Room IP address, Room PIN, and your name on the application's main screen.
4. Click on the "**CONNECT NOW**" button to join the meeting.
5. You will now be logged into the Pro-Meet meeting, and the Pro-Meet Dashboard will appear on your device screen.

5.2.2.2 Joining a Pro-Meet meeting using a QR code

Follow the steps below to join a Pro-Meet meeting using a QR code:

1. Ensure that your device is connected to the same network as Pro-Meet and launch the Pro-Meet app on your device. The login screen for the Pro-Meet meeting room will appear.
2. On the bottom toolbar of the screen, tap on the "Scan QR Code" button. A capture screen will then appear on your device.

3. Scan the QR code displayed on the main screen using the capture screen. Once you have completed these steps, you will be automatically logged in to the Pro-Meet meeting, and the Pro-Meet dashboard will appear on your device.

5.3 Use iOS/OS X Airplay Service to mirror Mac laptops and iPhones.

If you're using an Apple device, you can mirror your screen on the main display using an Apple Airplay service. No additional application is needed to use this feature; the iOS mirroring feature must be enabled on the Pro-Meet Web user interface.

The minimum requirements for mirroring via Airplay services are:

- iPhone or iPad/Mini iPad – Minimum version iOS 12 or higher.
- MacBooks and Apple Computers – Minimum version OS X 10.12 or later.

To mirror your screen using Airplay services:

1. Connect your Apple device to the same network as Pro-Meet.
2. If you're using an iPhone or iPad, go to the Control Center and tap on "Screen Mirroring." If you're using a MacBook or Apple computer, click the Airplay icon on the Apple Menu Bar located at the top right corner of the screen, near the clock. This will display the Screen Mirroring list.
3. Choose Pro-Meet's Airplay device name.

To stop mirroring and disconnect your iPhone or iPad/Mini iPad:

1. Go to the Control Center.
2. Tap on "Stop Mirroring."

5.4 Use Miracast to mirror compatible Windows and Android

If you're using a Windows laptop or Android device, you can mirror your screen on the main display using the mirror. No additional application is needed to use this feature; however, the Miracast feature must be enabled on the Pro-Meet Web user interface.

To use Pro-Meet, you will need a Windows laptop or an Android device that supports Miracast. If your Windows laptop's drivers are up to date, but you don't see the "Connect to a wireless display" option, it means that your device doesn't support Miracast.

Built-in Miracast technology is included in Android.

5.4.1 Mirroring Windows laptops Using Miracast

To mirror your Windows laptop on the main display using Miracast:

1. On your laptop, press Windows + K to open the Wireless Display options.

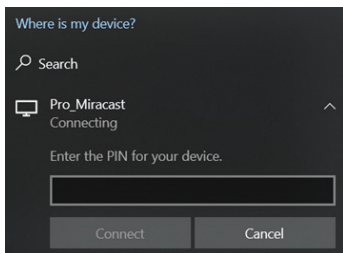


Figure 8: Windows project option screen

2. Select the name of your Pro-Meet collaboration device from the list of available wireless displays.
 3. Enter the 8-digit Room Pin mentioned on the display connected to Pro-meet.
 4. Click on "Connect" to start mirroring your screen on the main display.
- Your device name will be displayed on the main display when the connection is successful.

5.4.2 Mirroring Android Devices Using Miracast

To mirror your Android device using Miracast:

1. Open the Wi-Fi Direct, Miracast, or Screencast settings on your Android device. This will display a list of available device options.

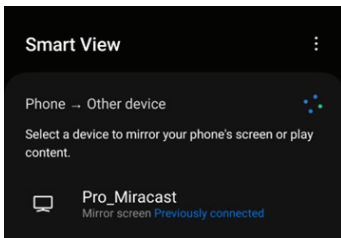


Figure 9: Android Screencast Setting

2. Find the Room Name of your Pro-Meet collaboration device in the list and select it. If a PIN code was activated on your Pro-Meet unit, you will be prompted to enter it in a PIN code field.

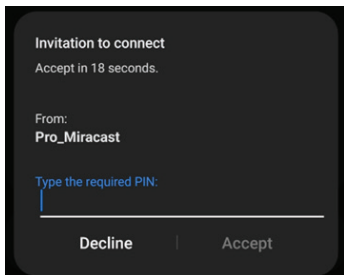


Figure 10: PIN code input screen

3. Enter the code that appears on the main display, and then click "Accept" or "Connect." Your device name will then appear on the main display, and your Android device screen will be mirrored on the main display.

Help Line: Panasonic Customer care 18004190373 | Email: helpline@in.panasonic.com
Register office: Panasonic Life Solutions India Private Limited,
12th Floor, Ambience Tower, Ambience Island,
NH-8, Gurgaon -122002, Haryana, India.