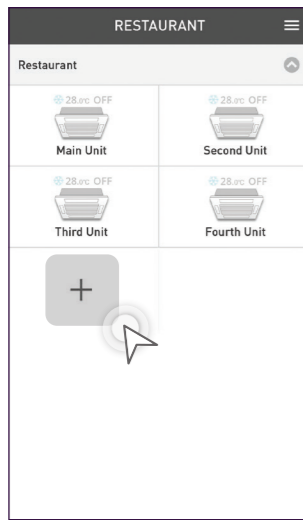


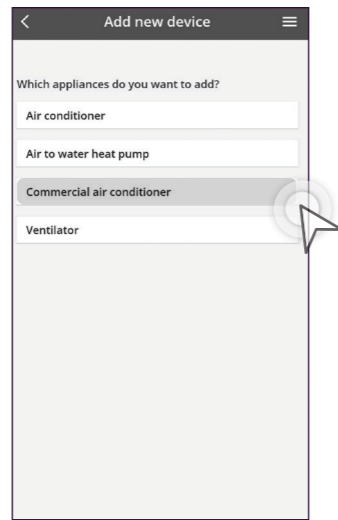
4.3 Manage & Assign Additional Users

Add Additional Users (Wired Remote Controller).



STEP 1

Tap the “+” icon.



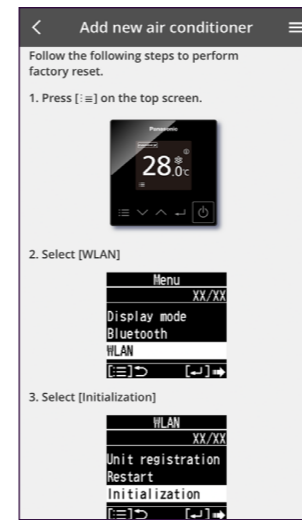
STEP 2

Select “Commercial air conditioner”.



STEP 3

Select “Wired Remote Controller”.



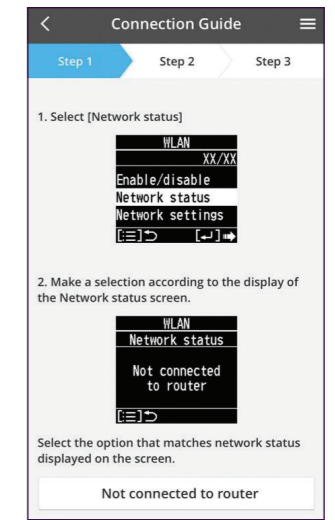
STEP 7

Select [WLAN] then select [Initialization].



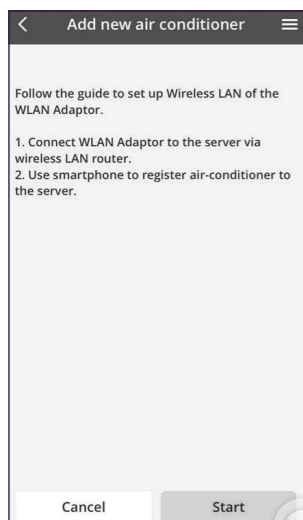
STEP 8

Select [WLAN] and Select [Enable].



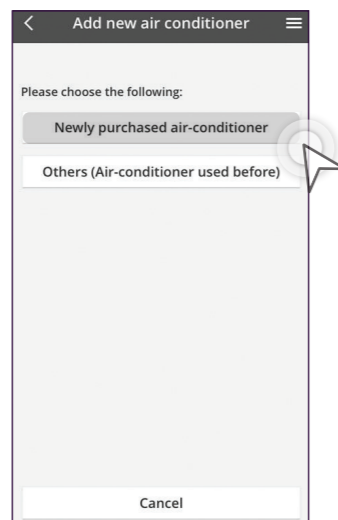
STEP 9

Select [Network status] and follow the selection according to the display.



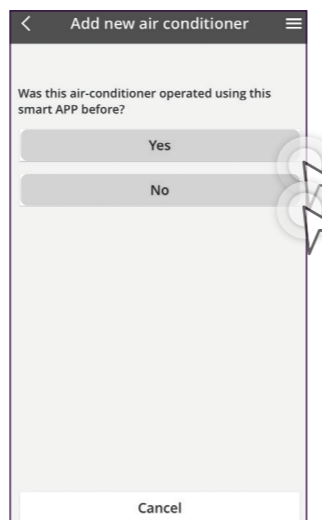
STEP 4

Tap “Start”.



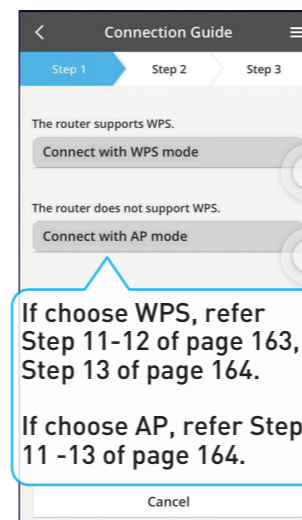
STEP 5

Select “Newly purchased air conditioner”.



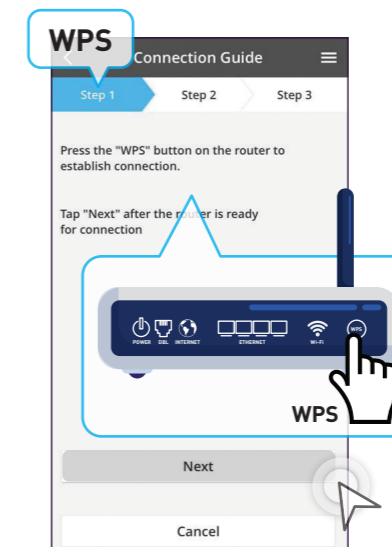
STEP 6

If “Yes” go to Step 9. If “No” proceed to Step 8.



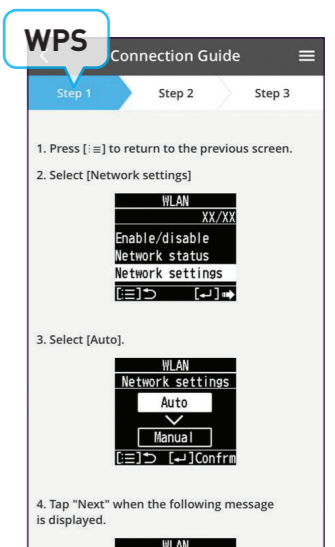
STEP 10

Choose to connect using WPS or AP.
**AP mode can only use with (Android 5.0 & IOS 11.0) and above.



STEP 11

Press the WPS button on router then tap “Next”.

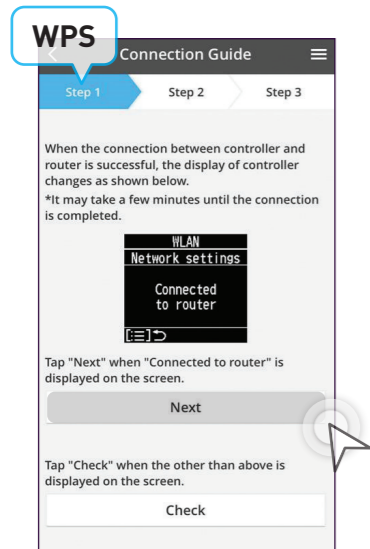


STEP 12

Select [Network settings] and choose [Auto] then tap “Next” to continue.

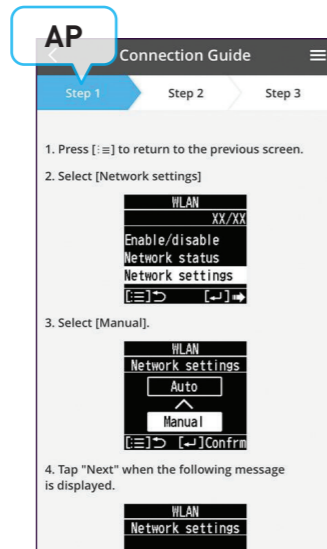
4.3 Manage & Assign Additional Users

Add Additional Users (Wired Remote Controller) continues...



STEP 13

If connection is successful the display of the controller will show "Connected to router". Tap "Next" when connected. Go to Step 14.



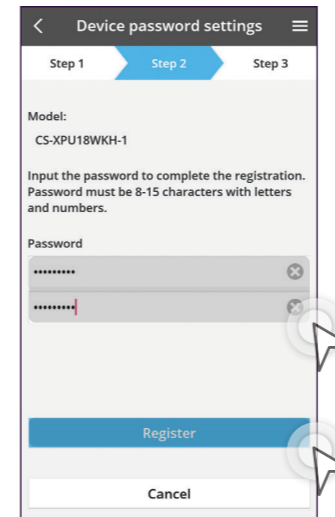
STEP 11

Select [Network settings] and choose [Manual]. Tap "Next" when the text reads "Operating in Manual".



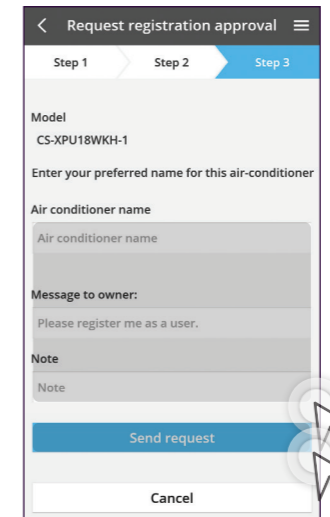
STEP 12

Tap "Join" when prompt Comfort Cloud wants to join Network.



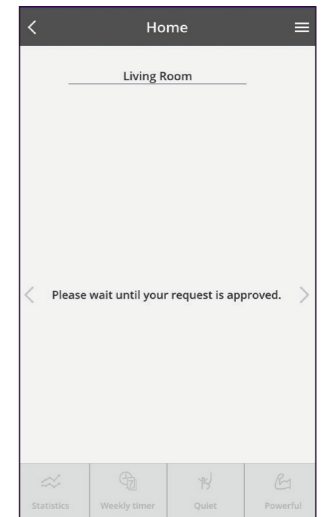
STEP 15

Key in Password then tap "Register".



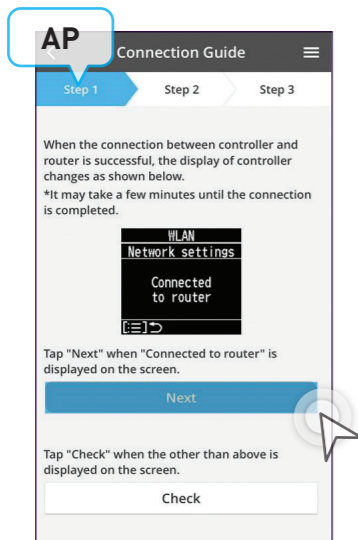
STEP 16

Name the air conditioner, and enter Message to owner and Note. Tap "Send request" once completed.



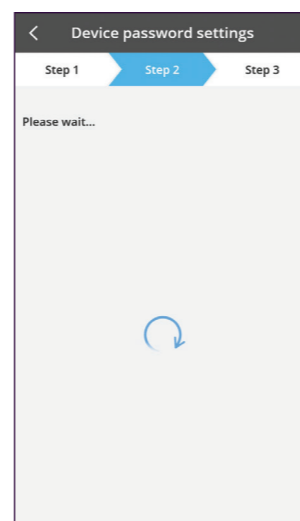
STEP 17

Please wait while admin approves your request.



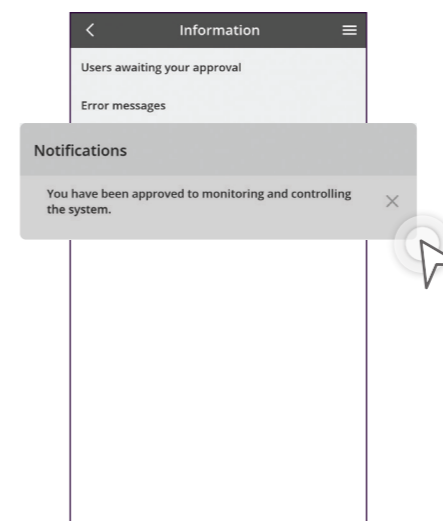
STEP 13

If connection is successful the display of the controller will show "Connected to router". Tap "Next" when connected. Go to Step 14.



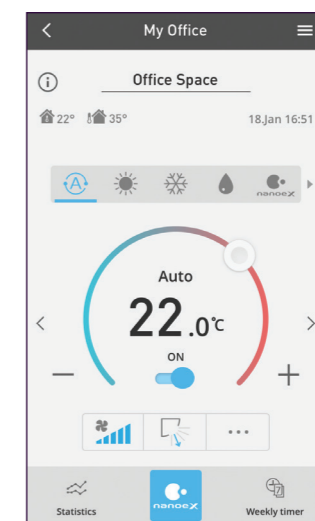
STEP 14

Please wait a while.



STEP 18

You will receive notifications once your request is approved by the admin.

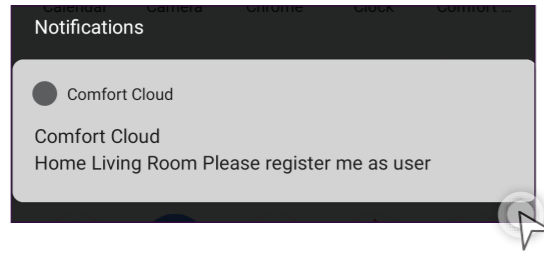


STEP 19

You now have control over the requested air conditioner.

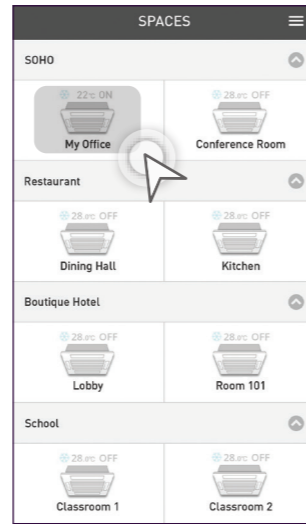
4.3 Manage & Assign Additional Users

Approve Additional Users (Admin).



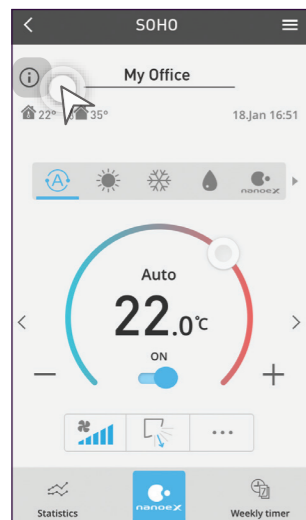
STEP 1

The admin user will receive a notification for additional user registration if the user has allowed Panasonic Comfort Cloud to send notifications.



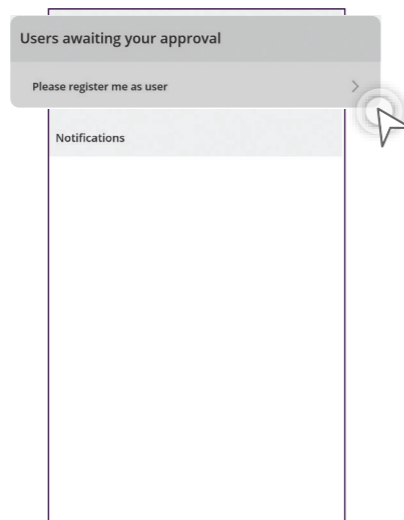
STEP 2

Select the air conditioner.



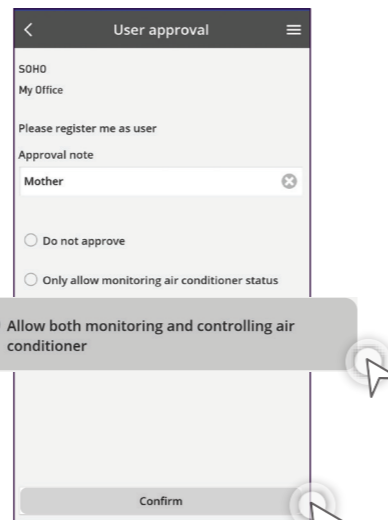
STEP 3

Tap the "i" notification button.



STEP 4

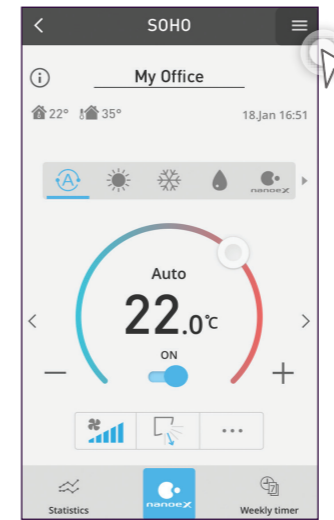
Tap the message.



STEP 5

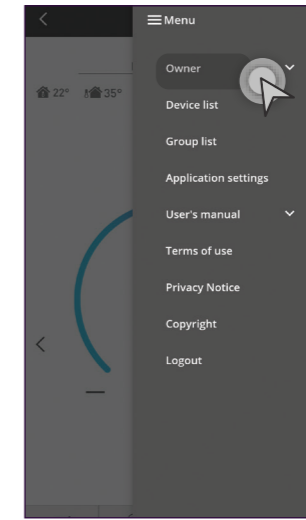
Choose the approval level to share with additional user then tap "Confirm".

Check User List.



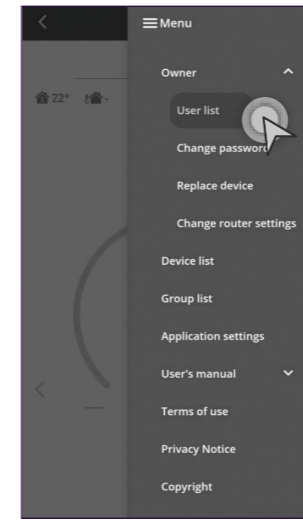
STEP 1

Tap the "☰" on the top right-hand corner of your screen.



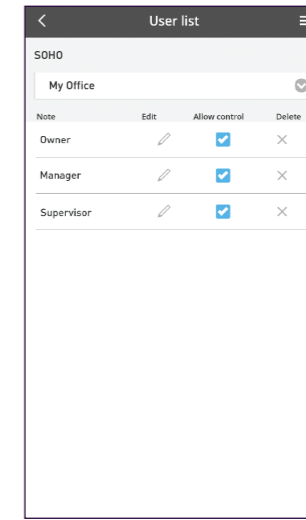
STEP 2

Tap "Owner" to expand the menu.



STEP 3

Select "User list".



STEP 4

Admin can see which user can control the particular air conditioner.