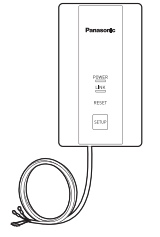
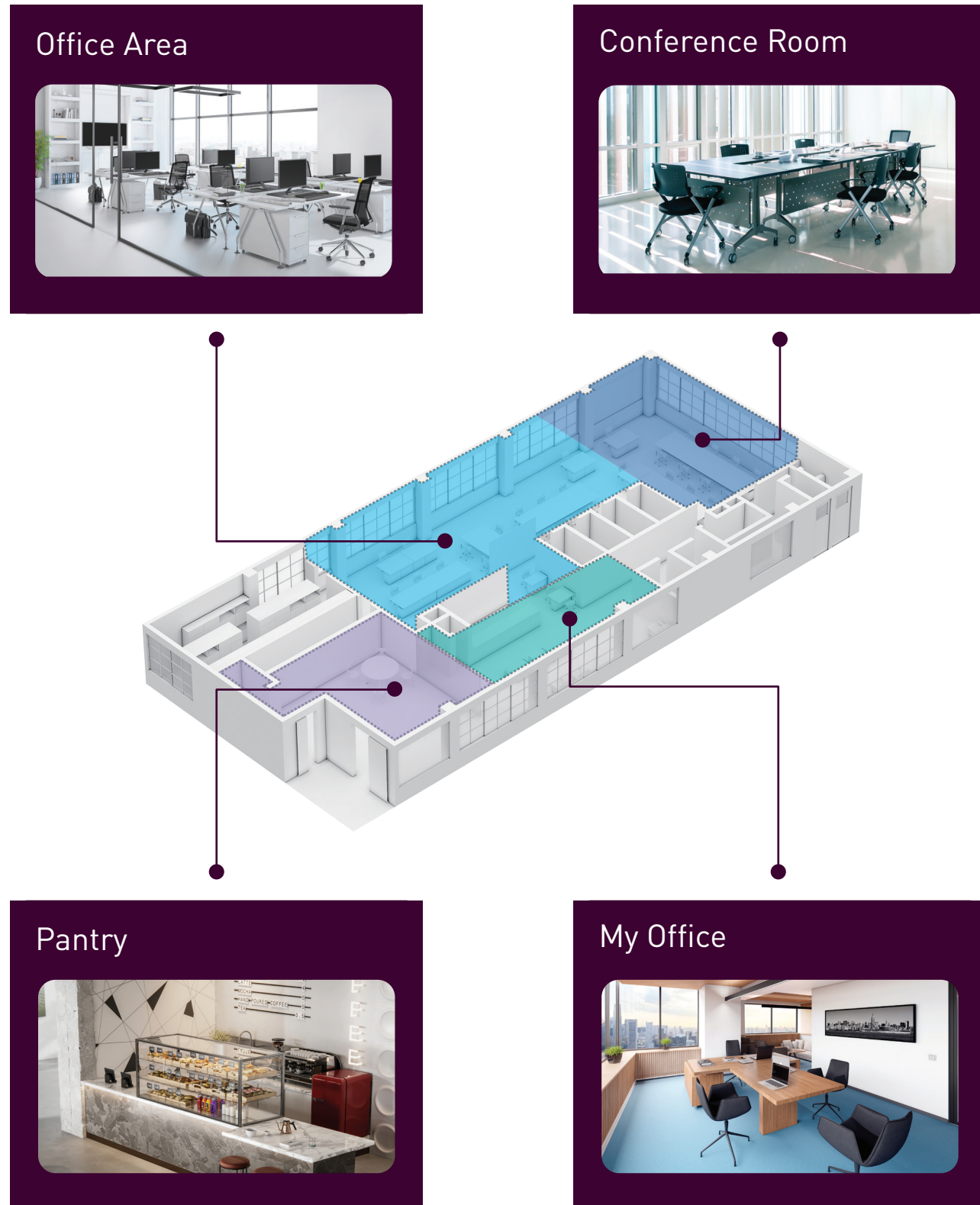


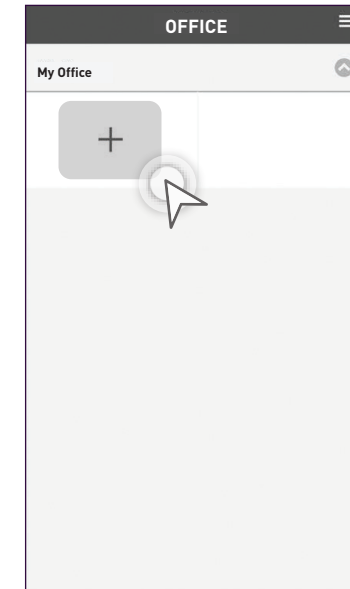
4.2 Add New Units to Groups

# Add New Air Conditioner Units to Groups.

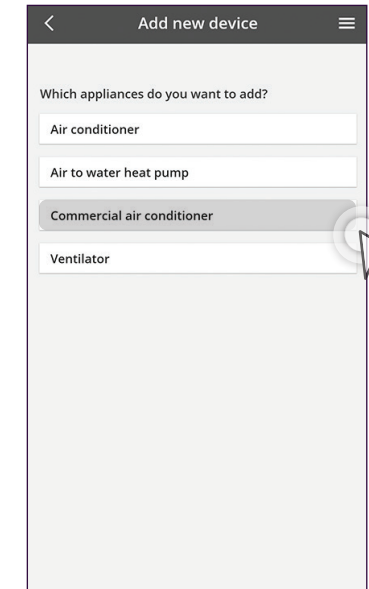
How to register new air conditioners to existing groups.



## Add New Air Conditioner Units (WLAN Adaptor).



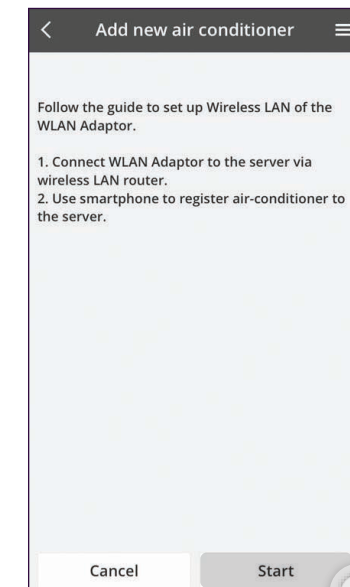
**STEP 1**  
Tap the "+" icon.



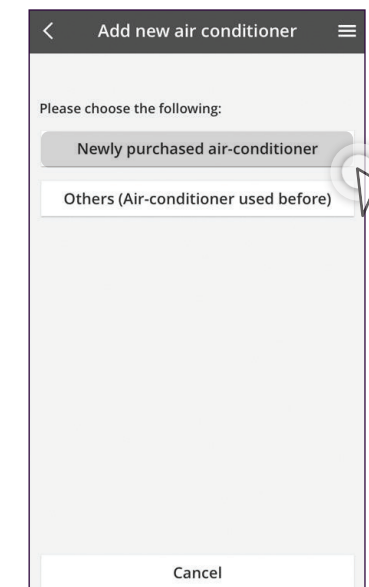
**STEP 2**  
Select "Commercial air conditioner".



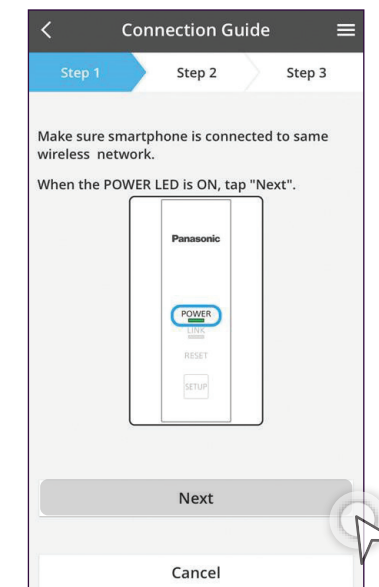
**STEP 3**  
Select "WLAN Adaptor".



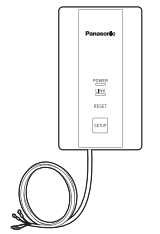
**STEP 4**  
Tap "Start".



**STEP 5**  
Select "Newly purchased air-conditioner".

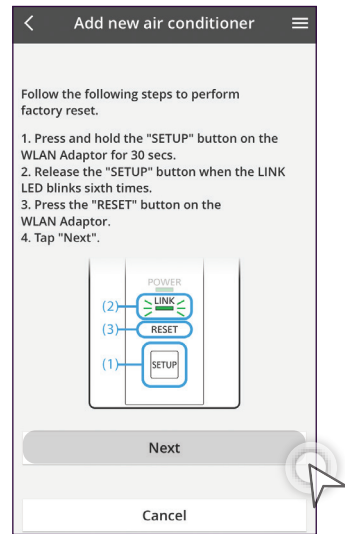


**STEP 6**  
Make sure POWER LED is ON and then tap "Next".



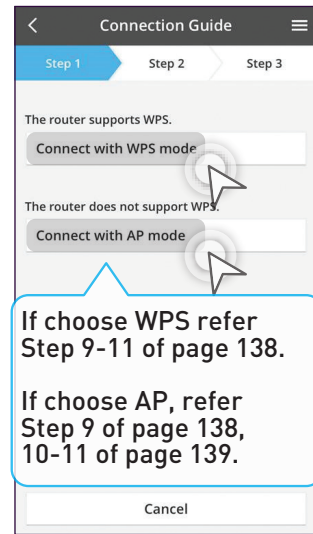
4.2 Add New Units to Groups

Add New Air Conditioner Units (WLAN Adaptor) continues...



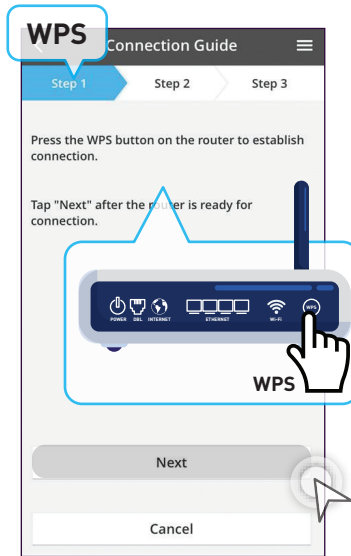
**STEP 7**

- a) Press and hold the "SETUP" button on the WLAN Adaptor for 30 seconds.
- b) Release the "SETUP" button when the LINK LED blinks 6 times.
- c) Press the "RESET" button on the WLAN and tap "NEXT".



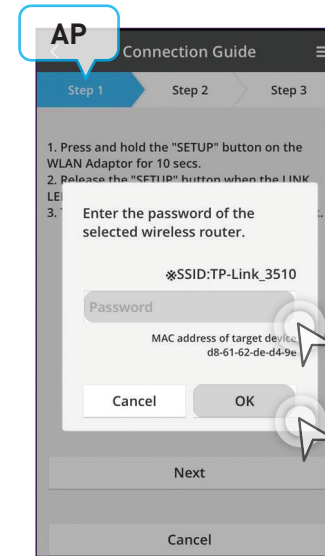
**STEP 8**

Choose to connect using WPS or AP. \*\*AP mode can only use with (Android 5.0 & IOS 11.0) and above.



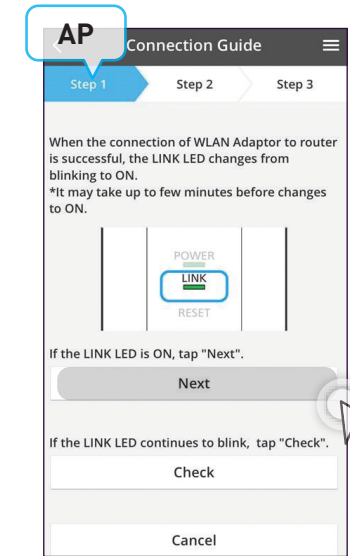
**STEP 9**

Press the WPS button on router and tap "Next".



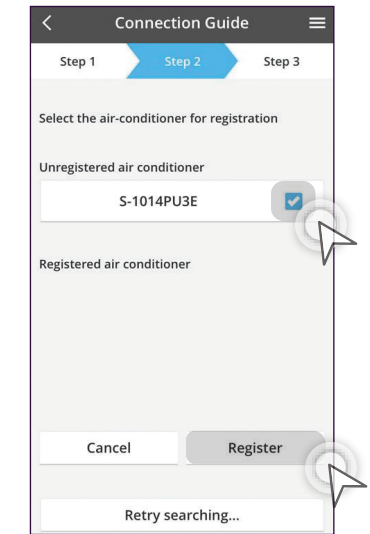
**STEP 10**

Key in your router password then tap "OK".



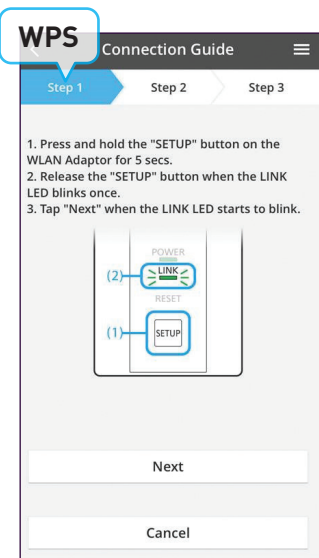
**STEP 11**

When the LINK LED stops blinking, tap "Next". Go to Step 12.



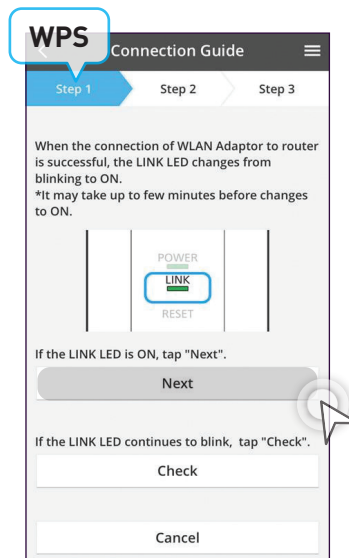
**STEP 12**

Select the air conditioner then tap "Register".



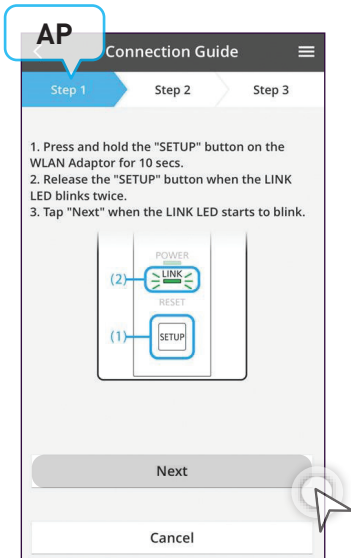
**STEP 10**

Press "Setup" continuously until "LINK LED" starts to blink and then release setup button immediately.



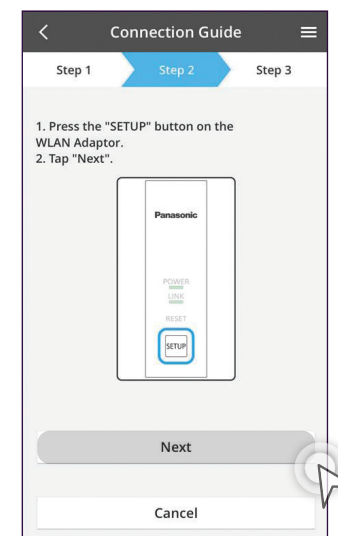
**STEP 11**

Tap "Next". Go to Step 12.



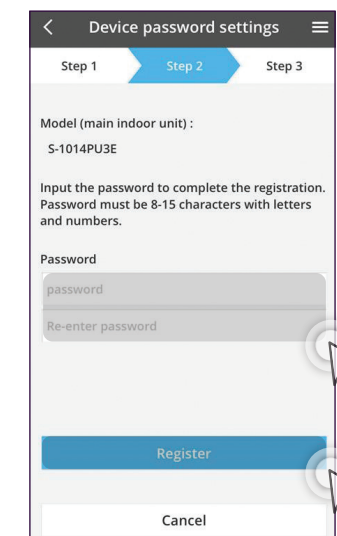
**STEP 9**

Press and hold "Setup" for 10 seconds and release when the LINK LED blinks twice. Tap "Next" when LINK LED starts to blink.



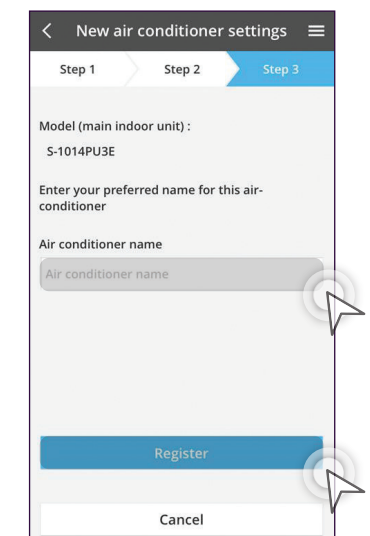
**STEP 13**

Press the "SETUP" button then tap "Next".



**STEP 14**

Key in device ID and Password then tap "Register".



**STEP 15**

Set air conditioner name then tap "Register".