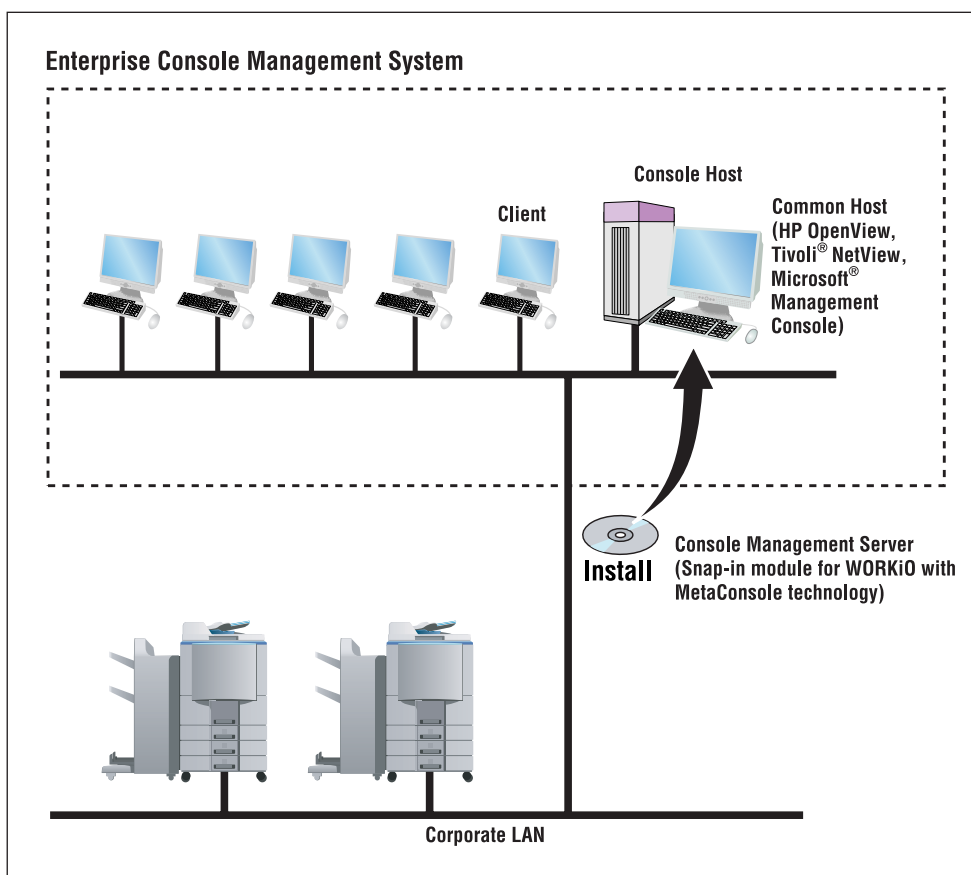


Console Management System

MetaConsole™

Flexibility & Scalability



Highlights

- **Consistency:** centralized administration of all your devices
- **Scalability:** deploy one or many servers depending on the size of your network, and access them from any major management console
- **Platform independence**
- **Rapid development and deployment**
- **Upgradability:** download service providers to support new devices and services from NETAPHOR™'s web site

Console Management Solution

MetaConsole is the only technology that enables a single client to integrate with multiple management consoles on multiple operating system platforms. Through a flexible "many to many" three-tier architecture, extensive reuse of components, and the use of Java and XML, MetaConsole pioneers a new paradigm. The interface for managing a particular network device or service

provides the same core set of functions when added to any management console. At the same time, the client conforms to that console's look and feel and leverages the error handling and other functions available from within that console. MetaConsole works with Microsoft® Management Console, HP OpenView, and Tivoli® NetView, and in a Java™ enabled web browser. Clients support a variety of printers, servers, and network devices, and many more are being added. You can freely add service providers (components for

handling specific device types) to address all of the enterprise's management needs within a single environment.

Alarm management, normally available only in high-end consoles, is integrated within MetaConsole's MMC and browser implementations. Management centers responsible for the entire network can deploy HP OpenView and Tivoli® NetView, with MMC and browser-based solutions deployed in workgroup environments.

The future of device management

No other approach gives you the flexibility and scalability of MetaConsole

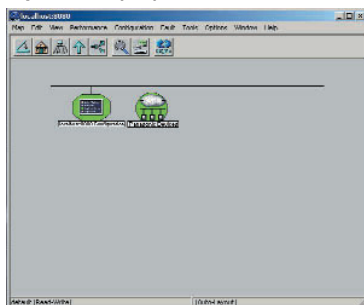
Technical Abstract

The MetaConsole's three-tiered architecture which allows clients to be device independent and allows service providers (which contain device-specific knowledge) to be client independent. MetaConsole implements several communications protocols, including SNMP (the most popular device-management protocol). Adding a new protocol requires no modifications to any of the clients, as all of this knowledge is contained within a service provider. The architecture stresses device-independent protocols and data.

MetaConsole has three major components:

- MetaConsole clients integrates with consoles. Clients send management requests for a device to the MetaConsole server in the form of XML queries. The use of XML allows for abstraction of a device's management characteristics and for rapid development when adding new device classes or types.
- MetaConsole service providers communicate with the devices and services; all device- or service-specific knowledge is contained within a specific service provider.
- The MetaConsole server communicates with both the clients and the service providers. The HTTP interface implemented by the MetaConsole server provides a mechanism to access MetaConsole functions across firewalls.

OpenView (HP)



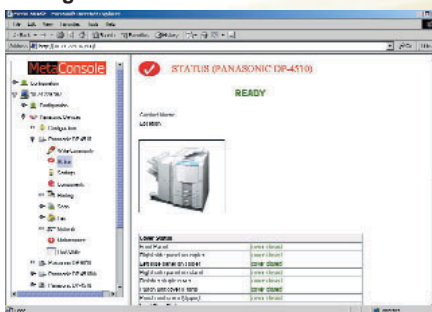
Applicable Models:

- DP-6020/4520/3520,
- DP-6010/4510/3510,
- DP-3010/2310, DX-800

Benefits

- **A manufacturer of hardware or software**, when providing management capabilities, benefits from MetaConsole's short development cycle and from MetaConsole's support of many consoles. MetaConsole is an open-ended solution, allowing manufacturers to offer their customers a management environment in which all manufacturers who have created MetaConsole solutions can operate together.
- **An enterprise** that wants to consolidate its management tools under one umbrella, without giving up NetView Enterprise or whatever other console it has already deployed, benefits from the consistency and uniformity that MetaConsole provides.
- **Integrators and developers** who create custom solutions benefit from MetaConsole's easy and powerful tools easier and more powerful than a platform's or management console's tools and than available third party tools. Creating a MetaConsole solution allows developers to concentrate on the management aspects of their devices instead of environmental (console or platform) issues.

Console Manager (Netaphor™) Manager View



System Requirements

| | |
|-------------------------------------|--|
| Client OS | Windows® 98/Me/2000/XP, Windows NT® 4.0 Pentium II 300 MHz or higher |
| Server OS | Windows® 2000, Windows NT® 4.0 Pentium II 300 MHz or higher, Pentium III 500 MHz or higher (preferable) |
| Memory (Server PC and Client PC) | 256 MB or more (preferable) |
| Hard Disk (Server PC and Client PC) | 50 MB or more free disk space |



Netaphor software
the network management company

© 2003 NETAPHOR SOFTWARE, INC. All Rights Reserved. MetaConsole™ is a trademark of Netaphor™ Software, Inc. Tivoli® is a registered trademark of IBM Corporation. OpenView is a registered trademark of Hewlett-Packard.

Microsoft®, Windows®, Windows NT® and Microsoft® Management Console are registered trademarks of Microsoft Corporation. JAVA™ is a registered trademark of Sun Microsystems, Inc. WORKIO® is a registered trademark of Matsushita Electric Industrial Co., Ltd. All other brand or product names are the property of their respective holders.

Design and specifications are subject to change without notice.