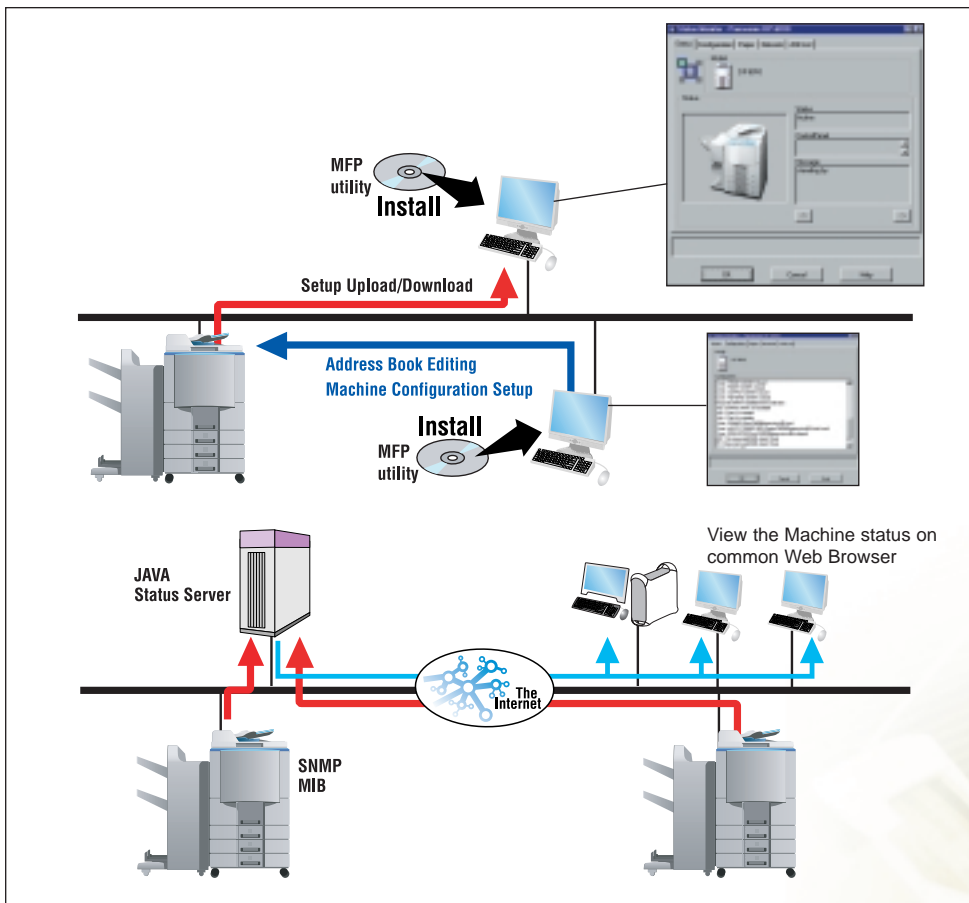


# Status Monitoring & Device Management via Network

Exclusive Device Management Tools for Efficient Control of Networked WORKiOs



## Highlights

- Network Status Monitor for desktop device monitoring
- Panasonic Web Status Monitor for monitoring in multi-OS networks
- Device Locator for locating network devices
- Configuration Editor for remote setup via network

## Outline

Standard bundled MFP Utilities enable remote monitoring and setup of WORKiO machines via network.

The included Network Status Monitor allows you to monitor the current status of a networked WORKiO from your desktop.

There's also a Panasonic Web Status Monitor,

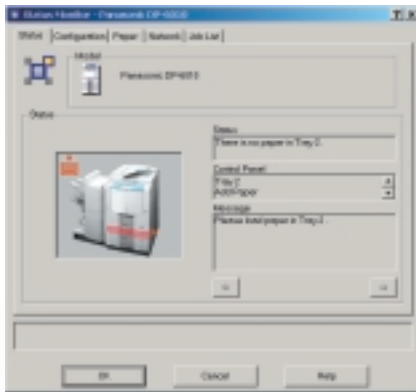
that allows you to check the status of a remote WORKiO via a standard web browser (such as Internet Explorer) on any Java™-enabled computer (Microsoft® Windows®, Macintosh® OS, UNIX, etc.).

The Device Locator allows you to easily locate and specify a WORKiO even when two or more WORKiOs are connected to the same network.

Configuration Editor enables you to setup a WORKiO via the network. This makes it much easier to edit the device configuration when adding options or making other changes.

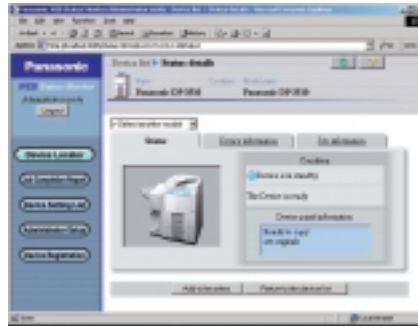
## Network Status Monitor

- When the provided MFP Utilities software is installed, the Status Monitor icon can be programmed to appear in the system tray.
- If errors or abnormalities occur on the WORKiO, the system tray icon flashes red to alert you.
- Simply double-click the icon to open the Status Monitor window and view detailed status information.
- When the "Paper out" message appears with the system tray icon flashing red, the pop-up message window shows an illustration of the WORKiO with the error section indicated, just add paper to the paper tray to restore normal status. The icon will turn green.
- Checking the current status of a remote WORKiO can be done anytime, even while doing other jobs.



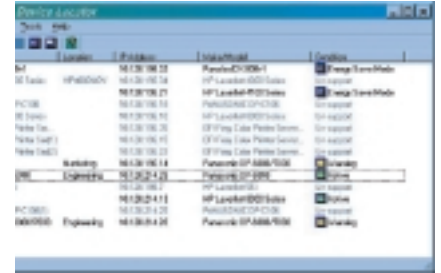
## Panasonic Web Status Monitor

- Although the Network Status Monitor is designed exclusively for the Windows operating system, the Panasonic Web Status Monitor works under any JAVA™-enabled environment.
- This means that the Panasonic Web Status Monitor will work on any platform (Microsoft® Windows®, Mac® OS, UNIX, etc.) via a standard web browser such as Internet Explorer.



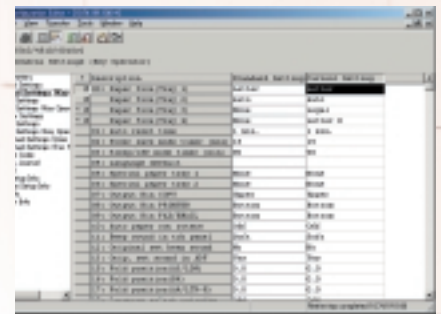
## Network Device Locator

- The Network Device Locator allows you to easily locate the target device even when two or more network devices are present on the network.
- The Network Device Locator lists all devices on the network, together with the Device Name, Location, IP Address, Make and Model Name, and current status. (Energy Saver Mode, Active, Warning, etc.)
- You can check which WORKiOs are available (in idle mode) before specifying which one to use for printing.



## Network Configuration Editor

- The Network Configuration Editor lets you remotely configure a networked device.
- Machine settings can be edited on the desktop PC and uploaded to or downloaded from the networked machine, making machine setup easy and convenient.
- Device settings can easily be copied to another machine, using "cut & paste" editing, saving time and effort.
- Especially convenient when changing device settings (such as when adding optional components).
- All settings and device management can be performed by the network administrator.



## System Requirements for Web Status Monitor

Client PC	Any Windows based PC with an enabled network connection capable of running Internet Explorer 5.5 or higher. Any Macintosh with an enabled network connection capable of running Internet Explorer 5.1 or higher.
Display	640 x 480 or higher (1024 x 768 preferable), 256 colors or more (True Color (16 bits) preferable)
OS	Windows® 98, ME, NT4.0, 2000, XP, Macintosh OS 9.x, OS X
JAVA	JRE1.4 or more
Server PC OS	Windows® 2000/XP running IIS 5.0, Windows® NT4.0/SP6 running IIS 4.0
CPU	Pentium II 300MHz or more, Pentium III 500MHz or more (preferable)
Memory	128MB or more, 256MB or more preferable
Free Hard Disk Space	100MB or more

\*DP-3010/2310 will be available 2nd Quarter 2003

Mac® and Macintosh® are registered trademarks of Apple Computer, Inc. Microsoft®, Windows® and Windows NT® are registered trademarks of Microsoft Corporation. JAVA™ is a registered trademark of Sun Microsystems, Inc. WORKiO® is a trademark of Matsushita Electric Industrial Co., Ltd. Design and specifications are subject to change without notice.