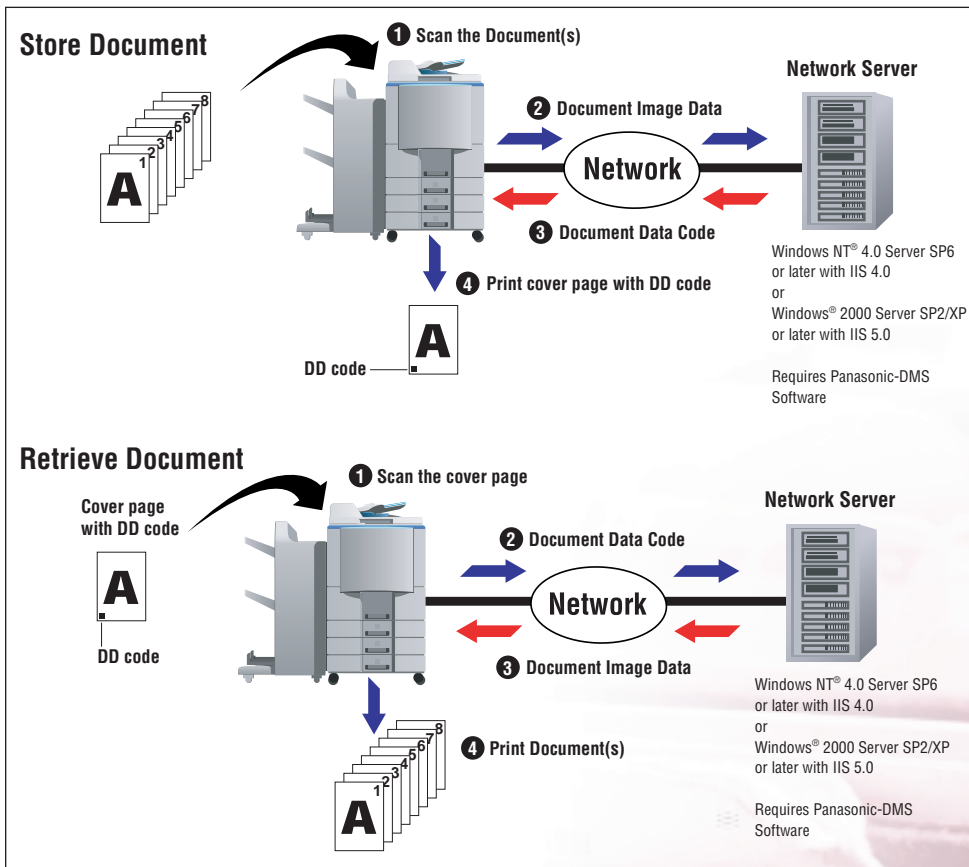


Storage & Document Management System

DD Server Software

“One-Page” Solution for More Efficient Network Document Sharing



Highlights

- Document digitization to save paper and reduce storage space
- Versatile data management in combination with Panasonic Document Management System
- Improved efficiency via network data sharing
- Simple document management with Panasonic-original DD code

Easy Document Storage

Panasonic's exclusive DD Storage System lets you easily convert paper documents into digital data. Just scan the documents into the WORKiO's ADF, just as if you were making a copy. Documents can be scanned in high resolution (600 x 600 dpi) with 256-level grayscale and stored on the DD Server. Depending on your requirements or the quality of the documents to be scanned, you can also scan at 300 x 300 dpi or 150 x 150 dpi.

Simple Management with DD Code

The DD Server System employs Panasonic's exclusive DD Storage System. A unique two-dimensional DD barcode is printed on the cover page of each document, so you only need to file the DD-coded cover page instead of the entire document. The rest of the document will be stored digitally and accessed when needed using only the cover page. This is a great way to minimize storage requirements and paper consumption.

Quick Retrieval using Cover Page Only

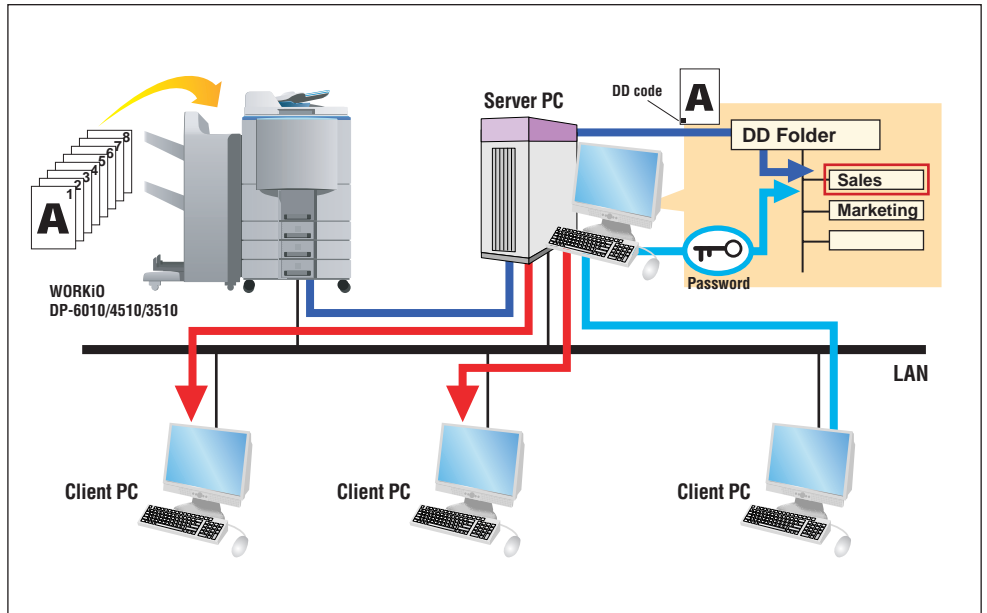
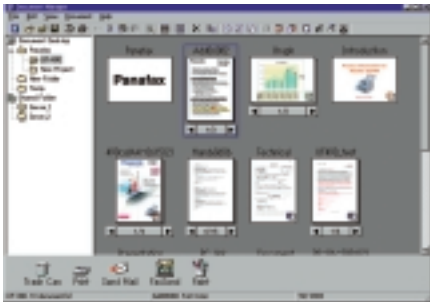
If you need to make a copy of the DD-stored document, you won't require the complete document. All you need is the cover page with the DD code stamped only. This makes document retrieval easier, simpler and quicker.



Network Browsing with Panasonic Document Management System

Link with Panasonic Document Management System

The DD-coded documents stored in the DD server can be accessed from any client PC on the desktop, using Panasonic Document Management System software. The Document Manager allows the user to manage the DD-stored documents in addition to the data scanned by WORKiO's or imported from the PC in an integrated view, making efficient data sharing via the network possible.



Editing with Document Viewer Software

You can access a DD server on the network from the Document Manager browser screen, and specify the target document. You can also annotate stored documents using the Document Viewer software. When it comes time to print, you can choose whether or not the annotations are printed out with the document.



Specifying the Destination Folder

When saving a document, you can specify which folder to save it in. By saving documents in specified folders, you can store them according to project, client, date, etc. When the information is confidential, you can choose to apply one of the various security levels to the document, restricting access from the client PCs on the network.

Environment	Contents
Client OS	Windows® 98/Me/2000/XP, Windows NT® 4.0
Server OS	Windows® 2000 Server/Professional SP2 or later, Windows® XP Professional with IIS 5.0 or Windows NT® 4.0 SP 6.0 or later with IIS 4.0
CPU	Pentium III 800MHz
Memory	Minimum 256MB (512MB or greater recommended)
HDD	Minimum 100MB for program Storage space for the document data also required

Requirement options for DP-6010/4510/3510/3010/2310

- DD Server Software (DA-WS20)
- Network Scanner Module (DA-NS600)

Microsoft®, Windows® and Windows NT® are registered trademarks of Microsoft Corporation.
WORKiO® is a trademark of Matsushita Electric Industrial Co., Ltd.
Design and specifications are subject to change without notice.