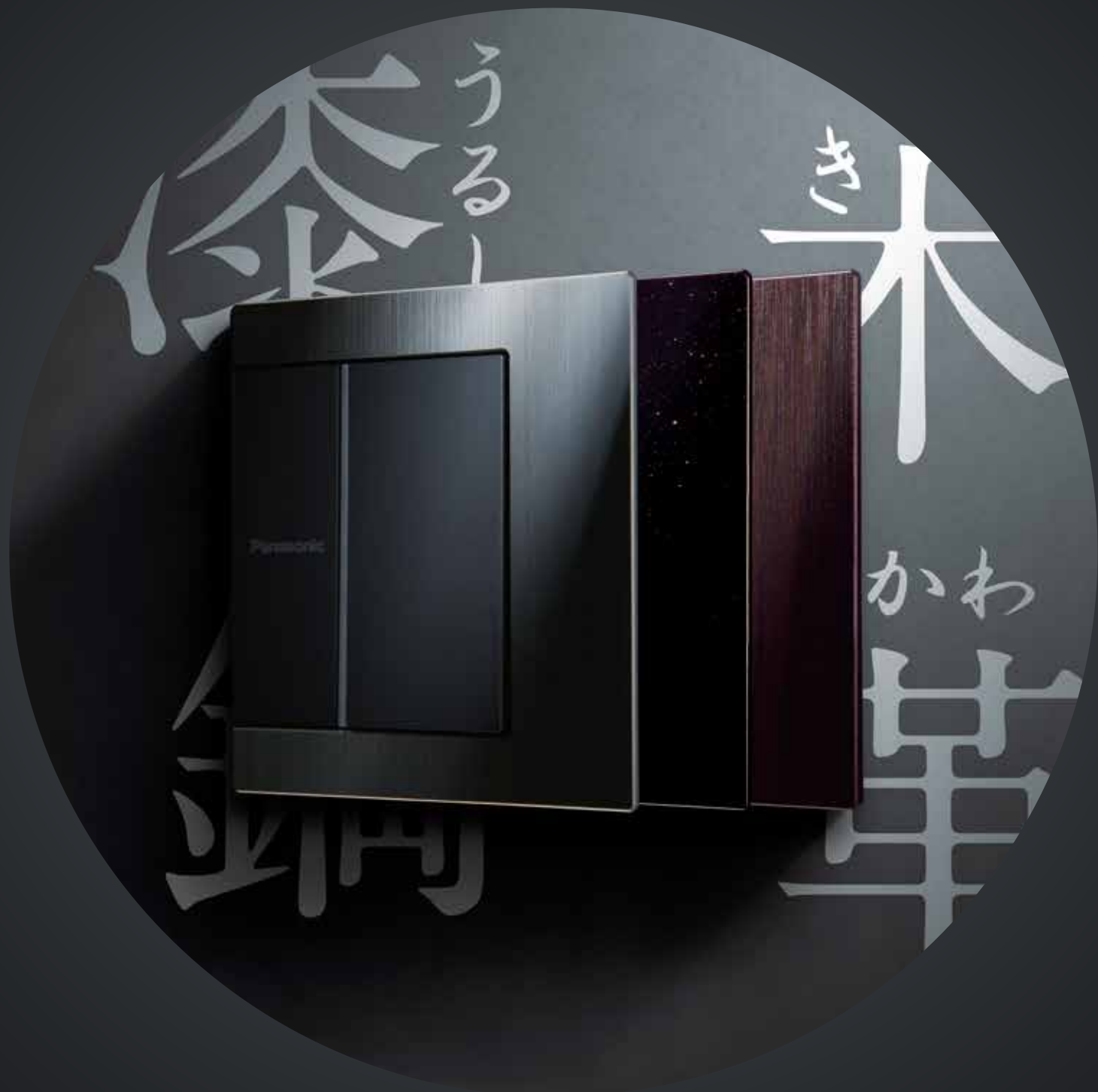


**Panasonic**

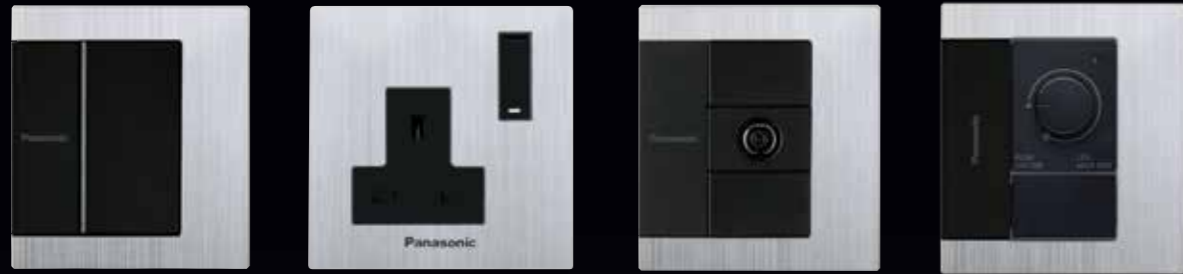
Homes & Living



# FLATIMA

SERIES

Panasonic top level series with super panel and vigorous outlines bringing elegance to your everyday life.

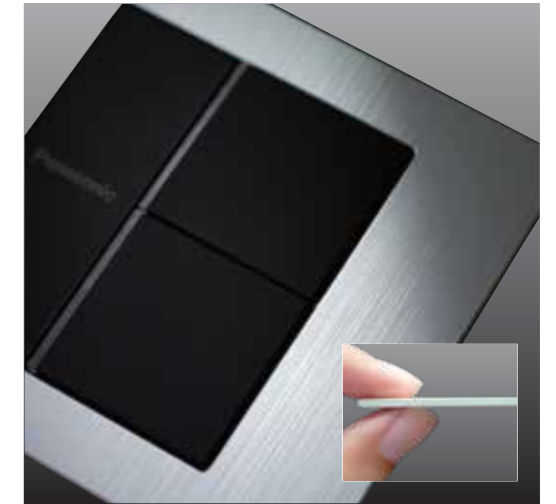


# FLATIMA **BS-TYPE**

SERIES

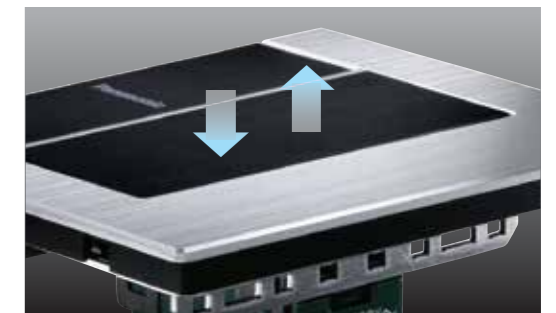
## SURFACE ART AND SUPER-SLIM DESIGN

Perfect asymmetric design along with high quality aluminum on a 2mm thickness plate.



## ADVANCED SWITCHING TECHNOLOGY

Push On/Off mechanism structure bringing a unique and softer touch when lighting your interior.



## HIGHLY RELIABLE SAFETY FEATURES

- European RoHS directive compliant, completely free from Cd, Hg, Cr6+, Pb, PBBs, PBDEs.
- Fire retardant material in use to prevent core components from burning.



New  
**漆** Urushi  
 — The Japanese Lacquer —



The brilliant technical fusion of Panasonic's century old history in wiring devices with "Aizu Nuri" by URUSHI (Japanese Lacquer) that originated 400 years back. Hand painted URUSHI is not only beautiful but also good for waterproofing and preservation from decay.

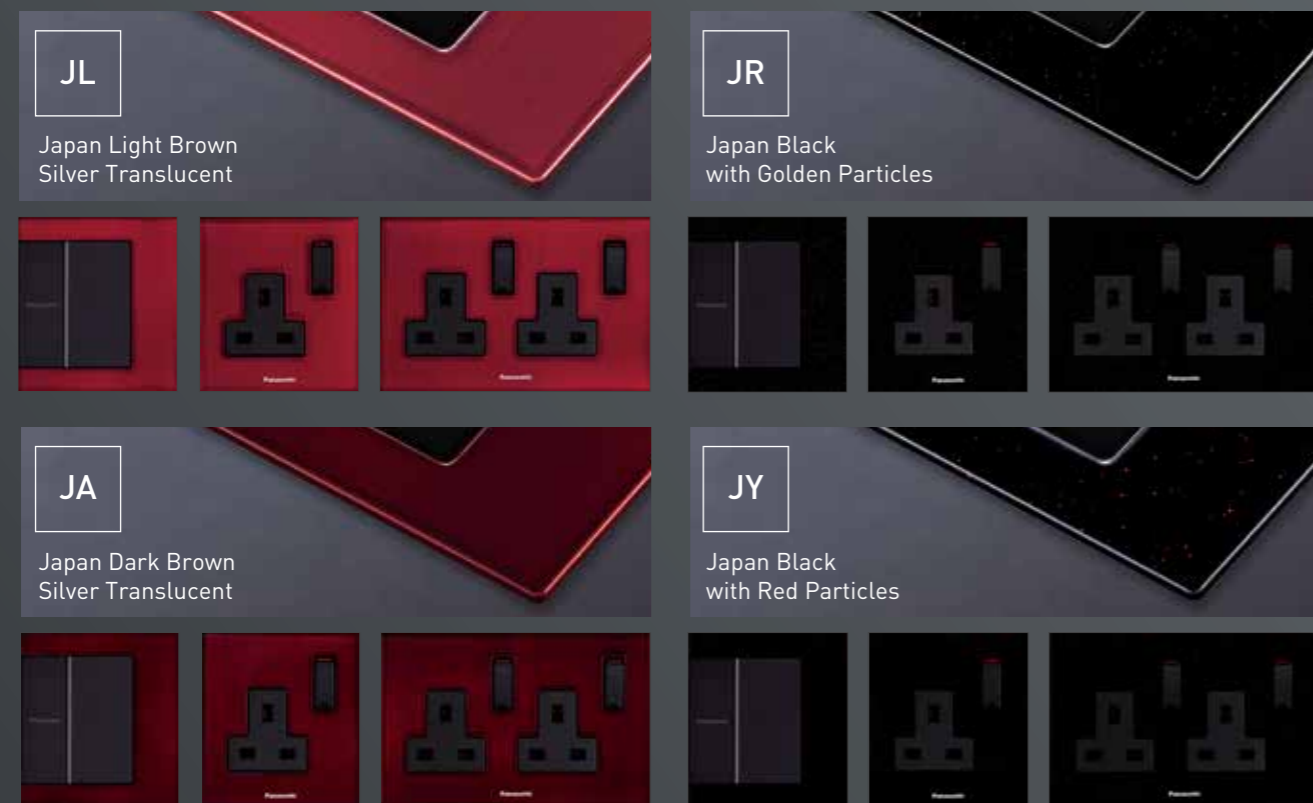
New  
**木** / **革**  
 Wood / Leather



Japan's latest ink-jet printing technology for natural texture and comfortable touch. Perfect to match with a wide variety of interior design styles.

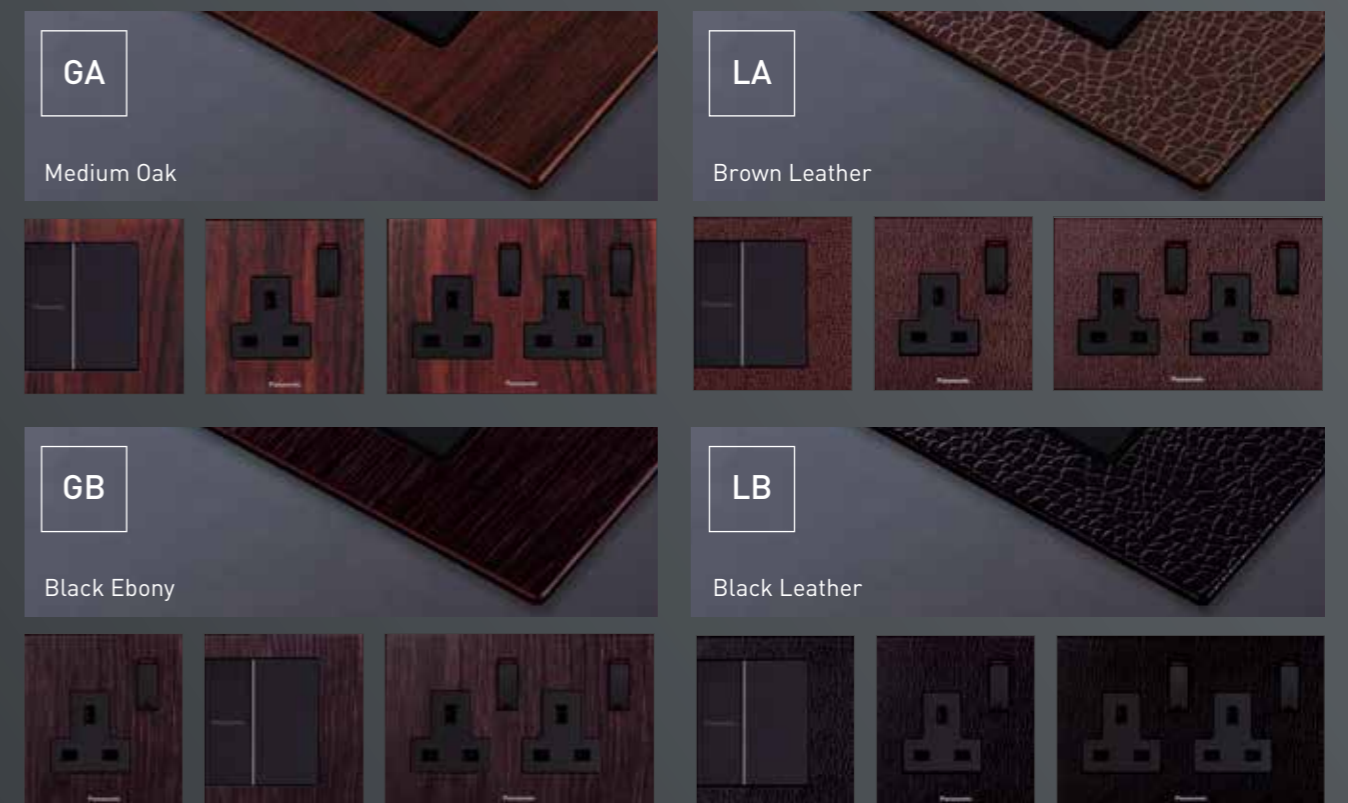
Model No[Plate] \*Special order : Made by your request from Japan

Switch, Accessories: WTFB6503□-1 / 1G Socket: WTFB6101□-1 / 2G Socket: WTFB6102□-1



Model No[Plate] \*Special order : Made by your request from Japan

Switch, Accessories: WTFB6503□-1 / 1G Socket: WTFB6101□-1 / 2G Socket: WTFB6102□-1



## Switches

**WTFBP51512□-1**  
1-Gang 2Way Switch 16AX SP  
Quick Connect Terminal



**WTFBP52522□-1**  
1-Gang 2-Devices 2Way Switch 16AX SP  
Quick Connect Terminal



**WTFBP53532□-1**  
1-Gang 3-Devices 2Way Switch 16AX SP  
Quick Connect Terminal



**WTFBP5004□-1**  
1-Gang Intermediate Switch 10AX  
Quick Connect Terminal



**WTFBP51559□-1** **NEW**  
1-Gang 2Way Illuminated Switch  
16AX SP Quick Connect Terminal



**WTFBP52569□-1** **NEW**  
1-Gang 2-Devices 2Way Illuminated Switch  
16AX SP Quick Connect Terminal



**WTFBP53579□-1** **NEW**  
1-Gang 3-Devices 2Way Illuminated Switch  
16AX SP Quick Connect Terminal



**WTFBP5411□-1**  
1-Gang Push Button  
Quick Connect Terminal



**WTFBP55137□-1**  
1-Gang 1Way Switch 20A DP  
with Indicator



**WTFBP5408699□1K**  
1-Gang 1Way Switch 45A DP  
with Indicator Pillar Terminal



**WTFBP5408699 □-1 (old model)**  
1-Gang 1Way Switch  
45A DP with Indicator

## Dimmer Switches

**WTFBP5781103□-1**  
Dimmer Switch 1000W  
220-240V~ 50/60Hz



**WTFBP579120□-1**  
LED Dimmer Switch 200W (LED50W)  
220-240V~ 50/60Hz



**WTFBP579150□-1** **NEW**  
LED Dimmer Switch 240W (LED200W)  
220-240V~ 50/60Hz



## Socket Outlets

**WTFBP11119□-1**  
1-Gang 13A Switched Socket



**WTFBP11129□-1**  
2-Gang 13A Switched Socket



**WTFBP1072□-1** **NEW**  
2-port USB Charger



**WTFBP2021□-1** **NEW**  
HDMI connector Socket



## DIMENSIONS of Applicable Box

Plate : 86 × 86 mm  
Box : 72 × 72 mm  
Fixing Center : 60.3 mm

Plate : 86 × 146 mm  
Box : 72 × 132 mm  
Fixing Center : 120.6 mm

## Accessories

**WTFBP2501□-1**  
TV Socket DIN Type



**WTFBP2731□-1**  
TV Socket F Type



**WTFBP2164□-1**  
Telephone Socket 6P4C



**WTFBP24886□-1**  
LAN Socket Cat 6



## Cable Outlets

**WTFBP7010**  
Cable Outlet with 20A Terminal



**WTFBP7020**  
Cable Outlet with 45A Terminal



## Hotel Series

**WTFBP52525□-1** **NEW**  
Do not Disturb  
/Please Clean Up Switch

Coming Soon

**WTFBP53576□-1** **NEW**  
Indicators of Do not Disturb and  
Please Clean Up and  
Push Switch with Bell Symbol

Coming Soon

**WTFBP5781□-1** **NEW**  
Electric Card Switch 16A 220V AC

Coming Soon



## Variety of Colors



Silver

S



Gold

Y



Bronze

Q

## Switches

### Switches 10AX/16AX / Illuminated Switch

WTFBP51512S-1  
WTFBP51559S-1



WTFBP51512S-1  
WTFBP52569S-1



WTFBP52522S-1  
WTFBP53579S-1



### Intermediate Switch Push Button

WTFBP5004S-1



WTFBP5411S-1

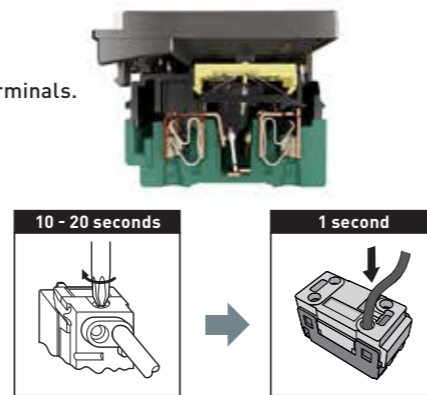
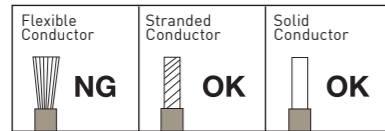


\*Push On/Off Switches.

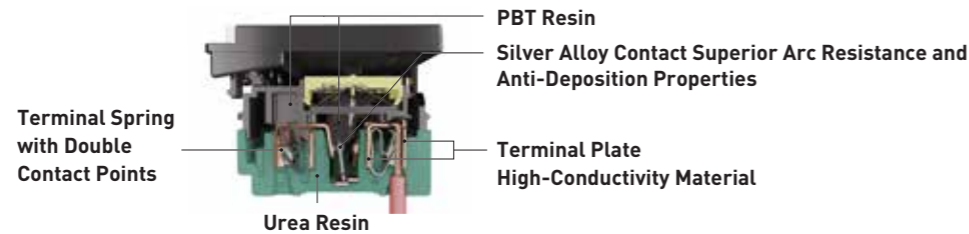
## Features

### Screwless Terminal (reduces installation work)

- All wire, and 14 - 12 AWG wires can be connected directly.
- Quick Connect Terminal significantly reduces connection time, compared to screw terminals.  
Screw terminal : 10 - 20 seconds  
Quick Connect Terminal : 1 second
- Wire connection can be uniformly performed regardless of operator skill level.
- Wires do not loosen even after a long usage. (double contact point structure)



## Safety



### Characteristics of Urea Resin

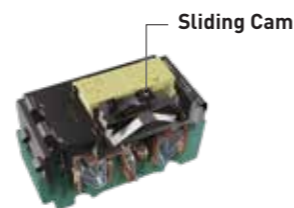
- Excellent Arc resistance, Arc tracking resistance, Flame retardance, Heat resistance Color fastness.
- Has good electrical performance and mechanical strength with excellent abrasion resistance.
- Difficult to scratching, and there is virtually no adherence of dust due to static electricity.
- Organic solvents and oily substances cannot permeate.

### Enclosure Material Characteristics (reference)

	Urea	PBT	Polycarbonate
Tracking Performance	Excellent	Good	Poor
Heat Deformation	Good	Good	Fair
Self-Extinguishment	Good	Good	Good

## Easy Operation

- Large control surface requires only a light push to switch On/Off.
- Sliding cam mechanism makes light-push On/Off switching possible.
- Switch automatically returns to original horizontal position after pushing.



### Dimmer Switch

WTFBP5781103S-1



### LED Dimmer

WTFBP579120S-1  
50W



WTFBP579150S-1  
200W



## Features

### WTFBP5781103S-1

- Applicable for 1000W incandescent lamps.

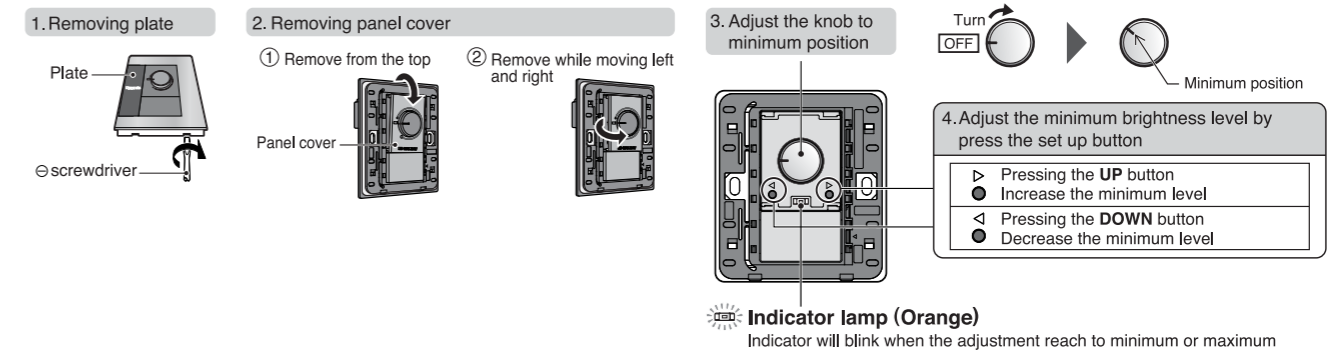
### WTFBP579120S-1

- Applicable to most LED major bulb brand (We recommend customer to check before purchase).

## Minimum Brightness Adjustment Function

### WTFBP579150S-1

- Minimum brightness can be adjust if the installer found the incident when turn the knob to minimum level
- Bulb is flickering : Increase the lower limit
  - Too bright at minimum level : Decrease the lower limit
  - Non equally brightness for each bulb : Increase the lower limit



## Applicable incandescent lamps & low voltage halogen lamps & LED bulbs



- When using low voltage halogen lamps, requires an applicable transformer to convert voltage from 220 V - 240 V to 12 V.
- The brightness when dimmed is different depending on the LED bulb types and Brand.
- When the knob is lower limit, brightness is different depending on the LED bulb types and Brand.
- Be sure to use a light bulb with a built-in fuse. Not doing so may result in damage to the dimmer switch when the light bulb burns out.

## Accessories - Television

### DIN Type

WTFBP2501S-1



### F Type

WTFBP2731S-1

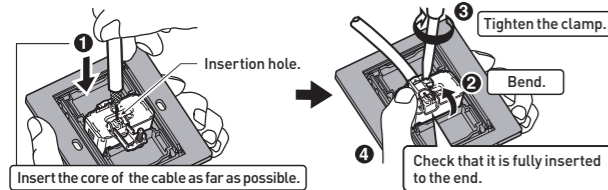
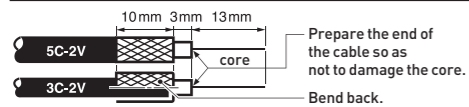


### Features

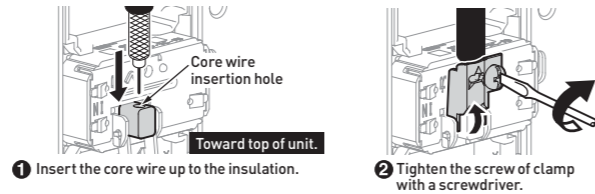
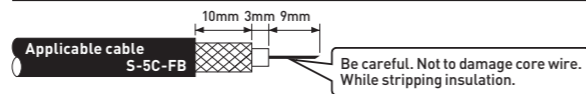
#### "Easy Connect" terminal for direct insertion of coaxial cable core.

Insert fully and tighten clamp.

WTFBP2501S-1



WTFBP2731S-1



## Accessories - Telephone & LAN

### 6P4C

WTFBP2164S-1



### Category 6

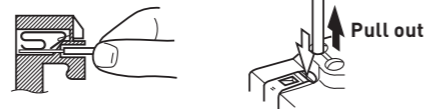
WTFBP24886S-1



### Features

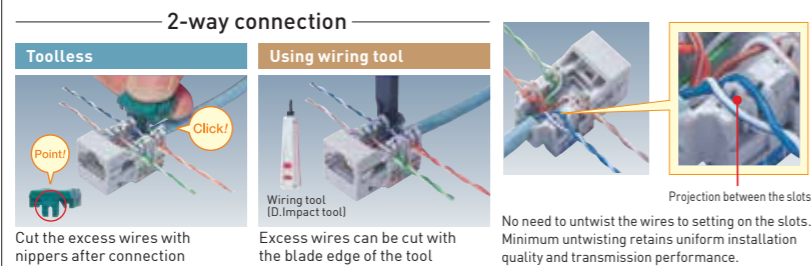
#### Telephone

- Simple Connection  
Just insert cable into the terminal hole.
- Easy Cable Disconnection  
Push removal button while pulling out cable.



#### LAN

- 1 It's not necessary to use special wiring tool.
- 2 No need to untwist the wires.



#### Pin/Pair assignment

Pair	Color	Pin No.	
		T568A	T568B (Optional)
1	W/BL	5	5
	BL	4	4
2	W/O	3	1
	O	6	2
3	W/G	1	3
	G	2	6
4	W/BR	7	7
	BR	8	8

## Hotel Series

### Do not Disturb and Please Clean Up switch and indicator

WTFBP52525-1

Coming Soon

WTFBP53576-1

Coming Soon

### Electric card switch

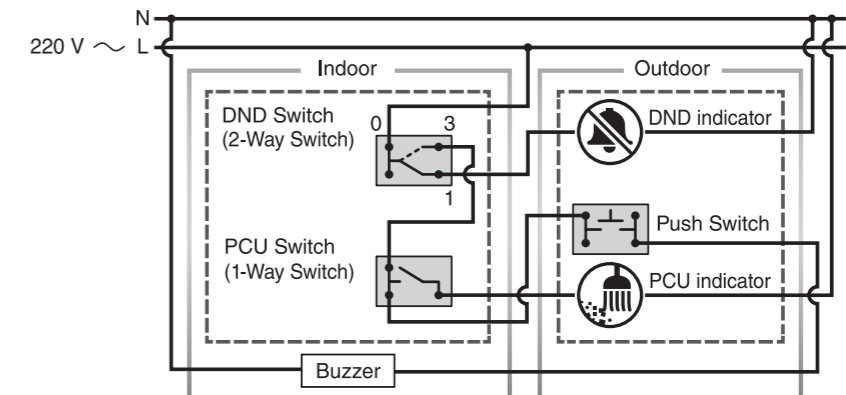
WTFBP5781-1

Coming Soon

### Features

## Wiring Diagrams

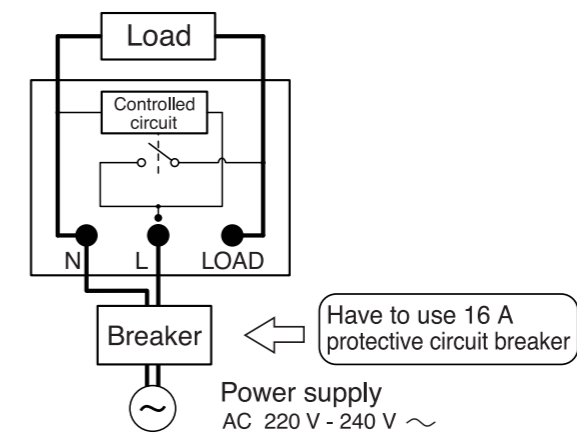
### DND and PCU Switch & Indicator



DND: DON'T DISTURB PCU: PLEASE CLEAN UP

The "DND" and "PCU" indicator can not be lit at the same time. Only "DND" indicator will lights up even though both switches are ON. Please turn "DND" switch to OFF mode in order to light up "PCU" indicator.

### Electric Card Switch



# Technical Specifications

## Switches 10AX/16AX

- ▶ Standards  
Comply with IEC60669-1
- ▶ Rating  
16AX 250V~ (2way switch)  
10AX 250V~ (intermediate, Push button)
- ▶ Ambient Temperature  
-10°C – +40°C
- ▶ Representative Performance  
·Electric strength : 2,000V 1 min  
·Operation test : 40,000 Operations  
·Temperature rise : Test current 22A (2.5 mm<sup>2</sup>)  
17.5A (1.5 mm<sup>2</sup>) \*10AX switch  
Not more than 45K (Terminals)
- ▶ Terminal  
Quick Connect Terminal  
(Screwless Terminal)
- ▶ Applicable Wire  
1.5 mm<sup>2</sup> - 2.5 mm<sup>2</sup>  
14 AWG - 12 AWG
- ▶ Terminal Capacity  
1.5 mm<sup>2</sup> × 1  
2.5 mm<sup>2</sup> × 1  
14 AWG × 1  
12 AWG × 1

## Switches 20A

- ▶ Standards  
Comply with IEC60669-1
- ▶ Rating  
20A 250V~
- ▶ Ambient Temperature  
-10°C – +40°C
- ▶ Representative Performance  
·Electric strength : 2,000V 1 min  
·Operation test : 10,000 Operations  
·Temperature rise : Test current 25A (4 mm<sup>2</sup>)  
Not more than 45K (Terminals)
- ▶ Terminal  
Pillar Terminal II
- ▶ Applicable Wire  
2.5 mm<sup>2</sup> - 6 mm<sup>2</sup>  
13 AWG - 10 AWG
- ▶ Terminal Capacity  
2.5 mm<sup>2</sup> × 2  
4 mm<sup>2</sup> × 1  
6 mm<sup>2</sup> × 1

## Switches 45A

- ▶ Standards  
Comply BS EN 60669-1\* and BS3676:1089\*\*
- ▶ Rating  
45A 250V~ (Resistive)  
Motor Full load current of 25A or less,  
power factor of 0.8 or more)
- ▶ Ambient Temperature  
-10°C – +40°C
- ▶ Representative Performance  
·Electric strength : 1,500V 1 min  
·Operation test : 10,000 operations  
·Temperature rise : Test current 51A (16 mm<sup>2</sup>)  
Not more than 45K (Terminals)
- ▶ Terminal  
Pillar Terminal
- ▶ Applicable Wire  
[Solid] 4 mm<sup>2</sup>  
[Stranded] 4 mm<sup>2</sup> - 16 mm<sup>2</sup>  
[AWG] AWG 10 - AWG 6
- ▶ Terminal Capacity  
4 mm<sup>2</sup> × 2  
6 mm<sup>2</sup> × 2  
10 mm<sup>2</sup> × 1  
16 mm<sup>2</sup> × 1

## Dimmer Switches

- | WTFBP5781103S-1  | WTFBP579120S-1  | WTFBP579150S-1  |
|--|---|---|
| ▶ Rating<br>220V-240V~ 50/60Hz 1000W                       | ▶ Rating<br>220V-240V~ 50/60Hz 200W (LED50W)  | ▶ Rating<br>220V-240V~ 50/60Hz 240W (LED200W)   |
| ▶ Ambient Temperature<br>0°C – +35°C                       | ▶ Ambient Temperature<br>0°C – +35°C  | ▶ Ambient Temperature<br>0°C – +35°C  |
| ▶ Terminal<br>Pillar Terminal                              | ▶ Terminal : Pillar Terminal  | ▶ Terminal : Pillar Terminal  |
| ▶ Applicable Wire<br>1 mm <sup>2</sup> - 4 mm <sup>2</sup> | ▶ Applicable Wire : 1 - 2.5 mm <sup>2</sup>   | ▶ Applicable Wire : 1 - 2.5 mm <sup>2</sup>   |
|  | ▶ Applicable Load<br>40W - 200W (Incandescent Lamp)<br>10VA to 200VA (Electronic Transformer)<br>50W/Max 8 Lamps (LED Dimmable Bulbs) | ▶ Applicable Load<br>40W - 240W (Incandescent lamp)<br>10VA - 200VA (Electronic transformer)<br>Maximum 200W (LED Dimmable Bulbs) |

## Socket Outlets

- ▶ Standards  
Comply with IEC60884-2-3 and BS1363-2
- ▶ Rating  
13A 250V~
- ▶ Ambient Temperature  
-10°C – +40°C
- ▶ Representative Performance  
·Electric strength : 2,000V 1 min  
·Operation test : 15,000 times (30,000 movements)  
·Temperature rise : Test current 20A (2.5 mm<sup>2</sup>)  
Not more than 52K (Terminals)
- ▶ Terminal  
Pillar Terminal II
- ▶ Applicable Wire  
1.5 mm<sup>2</sup> - 4 mm<sup>2</sup>  
15 AWG - 12 AWG
- ▶ Terminal Capacity  
1.5 mm<sup>2</sup> × 3  
2.5 mm<sup>2</sup> × 3  
4 mm<sup>2</sup> × 2

## 2-port USB Charger

- ▶ Standards  
Comply with IEC 60950-1
- ▶ Rating  
DC5V 2.0A
- ▶ Ambient Temperature  
-10°C – +40°C
- ▶ Representative Performance  
·Electric strength : 3,000V 1 min  
·Operation test : 10,000 Operations
- ▶ Terminal  
Quick Connect Terminal
- ▶ Applicable Wire  
ø1.6, ø2.0mm solid Cu only

## HDMI Connector Socket

- ▶ Connector Type  
HDMI (Female) to HDMI (Female)
- ▶ Ambient temperature  
-10°C – +40°C
- ▶ Performance  
- Operation test : 10,000times

## Accessories - Television Socket

- | WTFBP2501S-1  | WTFBP2731S-1   |
|---|--|
| ▶ Connector Type (Outlet) : DIN Type  | ▶ Connector Type (Outlet) : F Type   |
| ▶ Terminal<br>Screw Terminal<br>(Only coaxial core isn't screw terminal type)           | ▶ Terminal<br>Screw Terminal<br>(Only coaxial core isn't screw terminal type)      |
| ▶ Impedance Input, Outlet : 75Ω   | ▶ Impedance Input, Outlet : 75Ω  |
| ▶ Applicable Cable<br>Coaxial Cable<br>Characteristic Impedance 75Ω type : 5C-2V, 3C-2V | ▶ Applicable Cable<br>Coaxial Cable<br>Characteristic Impedance 75Ω type : S-5C-FB |

# Technical Specifications

## Accessories - Telephone Socket

- ▶ Connector Type  
Miniature Modular Jack, 6 position with 4-contacts, specified in TIA-1096-A (Previously in FCC part 68)
- ▶ Terminal  
Quick Connect Terminal (Screwless Connection)
- ▶ Applicable Wire  
Paired quad-type PVC indoor cable : Core wire to be 0.4 mm, 0.5 mm, 0.65 mm, in diameter (solid copper only)  
2-pair Business-phone indoor cable : Core wire to be 0.4 mm, 0.5 mm, 0.65 mm, in diameter (solid copper only)

## Accessories - LAN

- ▶ Connector Type  
"8-way unshielded fixed connector (miniature 8-position modular jack)" specified in IEC 60603-7
- ▶ Terminal  
IDC connection
- ▶ Applicable Wire  
4-pair UTP cable, Category 6  
Conductor : Solid copper wire, 24 AWG - 22 AWG (diameter : 0.5 mm-0.65 mm)

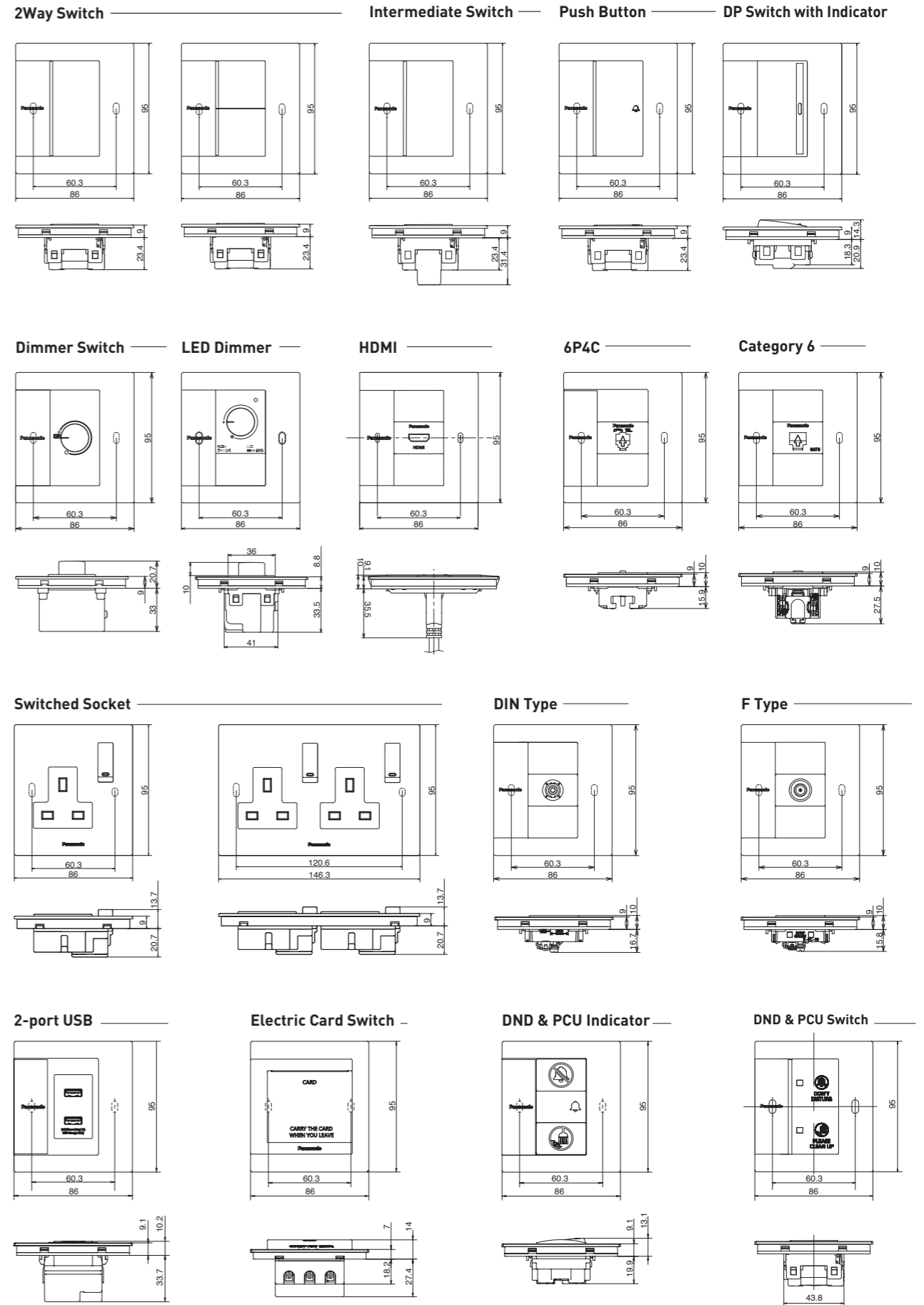
## Electric Card Switch

- ▶ Standards  
Comply with IEC60669-2-1
- ▶ Rating  
16A 220V - 240V ~
- ▶ Ambient Temperature  
-10°C - +40°C
- ▶ Representative Performance  
·Electric strength : 2,000V 1 min  
·Operation test : 40,000 Operations
- ▶ Terminal  
Pillar Terminal
- ▶ Applicable Wire  
1.5mm<sup>2</sup> - 4mm<sup>2</sup> rigid Cu only

## DND & PCU Indicator

- ▶ Standards  
Comply with IEC60669-1
- ▶ Rating  
Indicator : 220V ~  
Push button switch : 10A 250V ~
- ▶ Ambient Temperature  
-10°C - +40°C
- ▶ Representative Performance  
·Electric strength : 2,000V 1 min  
·Operation test : 40,000 (Push button Switch)
- ▶ Terminal  
Indicator : Quick Connect  
Push button switch : Screw terminal
- ▶ Applicable Wire  
Indicator : 1.5mm<sup>2</sup> - 2.5mm<sup>2</sup> rigid Cu only  
Push button switch : 1.0mm<sup>2</sup> - 2.5mm<sup>2</sup> rigid Cu only

## Dimensions



\*M3.5 mounting screws included.



---

Manufactured by

Panasonic Manufacturing Ayuthaya Co., Ltd.  
Panasonic Corporation Life Solutions Company  
Energy System Business Division, Power Components Business Unit

# Panasonic<sup>®</sup>

Panasonic Life Solutions Middle East & Africa  
Division of Panasonic Marketing Middle East & Africa FZE  
P.O Box 17985, Dubai, U.A.E Tel:+971 8007262 | [customer-care@ae.panasonic.com](mailto:customer-care@ae.panasonic.com) | [www.panasonic.com](http://www.panasonic.com)

JOIN US ON



---

All Rights Reserved © 2020 COPYRIGHT Panasonic Marketing Middle East & Africa FZE Life Solutions Division

■ MEECM3 1/2020-3YA