

CEILING MOUNT VENTILATING FAN

FV-24JR2

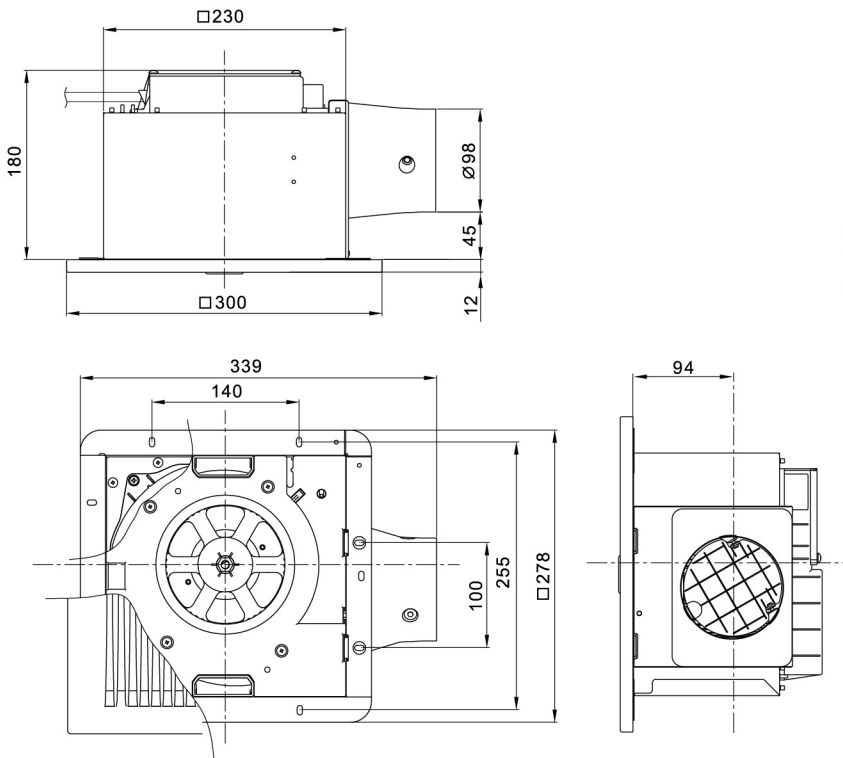
DC Motor Series



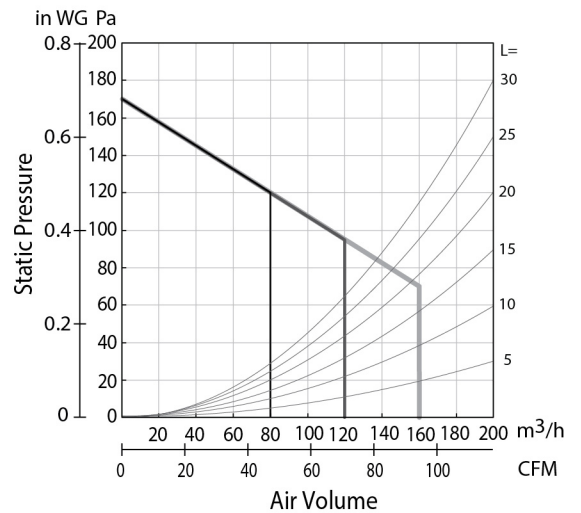
- DC (Direct Current) motor
- Auto operation by motion sensor
- Constant airflow (sustainable to static pressure up to 63 Pa)
- 3 air volume / Stop selectable at low notch
- 15-minute delay timer
- Well lubricated bearing for long life operation
- Resonance-noise-absorption structure for super low noise
- Sirocco fan with taper blade controls air turbulence effectively
- Reverse flow prevention shutter
- Pre-installed power cord

Dimension

Unit : mm



Performance Data



Specification

Model No.	Voltage			Air Volume		Consumption	RPM	Noise	Weight	Installation Space	Duct Size
	[V]	[Hz]		[m³/h]	[CFM]						
FV-24JR2	220-240	50/60	Hi	160	94	8	742	31	2.9	240 x 240	ø100
			Lo	120	71	5.2	556	26			
			Lo	80	47	3.6	441	20			

Note : RPM data is for reference only, values may vary subject to different conditions

Test Condition

- Air volume, electric characteristic and noise are specified at the static pressure of 0 Pa
- The values of noise level is A weighted average sound pressure level, the mean value are measured by our company, within +3 to -7 dB tolerance
- The values of noise level are measured at 1 m apart from the side of fan body when ducts are connected on outlet side
- The values of air volume are the mid-points of results measured by our company, within ±10% tolerance

CEILING MOUNT VENTILATING FAN



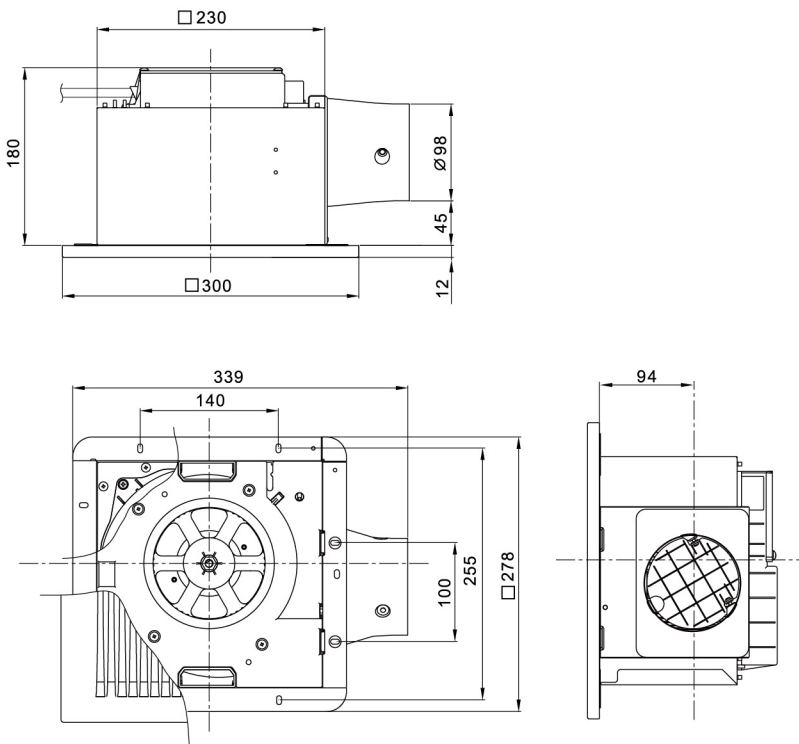
FV-24JA2

DC Motor Series

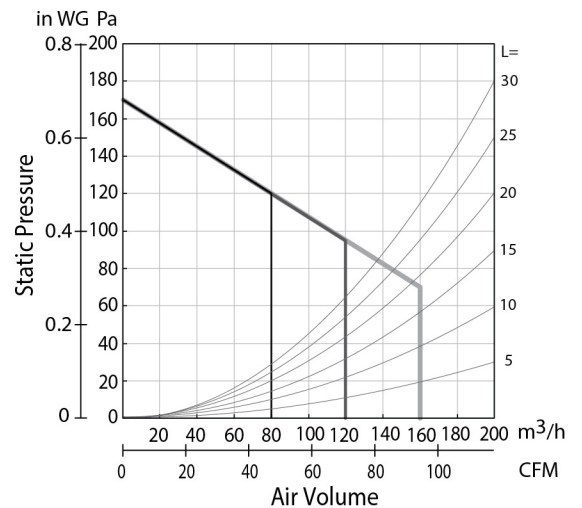
- DC (Direct Current) motor
- Constant airflow (sustainable to static pressure up to 63 Pa)
- 3 air volume / Stop selectable at low notch
- 15-minute delay timer
- Well lubricated bearing for long life operation
- Resonance-noise-absorption structure for super low noise
- Sirocco fan with taper blade controls air turbulence effectively
- Reverse flow prevention shutter
- Pre-installed power cord

Dimension

Unit : mm



Performance Data



Specification

Model No.	Voltage			Air Volume		Consumption	RPM	Noise	Weight	Installation Space	Duct Size
	[V]	[Hz]		[m³/h]	[CFM]						
FV-24JA2	220-240	50/60	Hi	160	94	8	742	31	2.9	240 x 240	ø100
			Lo	120	71	5.2	556	26			
			Lo	80	47	3.6	441	20			

Note : RPM data is for reference only, values may vary subject to different conditions

Test Condition

- Air volume, electric characteristic and noise are specified at the static pressure of 0 Pa
- The values of noise level is A weighted average sound pressure level, the mean value are measured by our company, within +3 to -7 dB tolerance
- The values of noise level are measured at 1 m apart from the side of fan body when ducts are connected on outlet side
- The values of air volume are the mid-points of results measured by our company, within ±10% tolerance