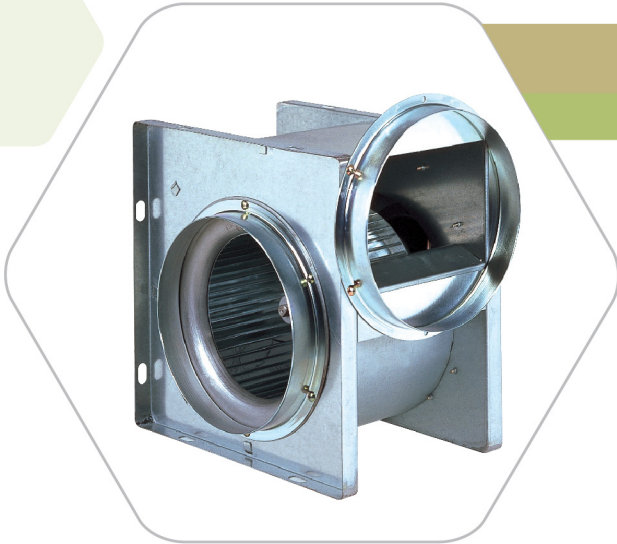


AIR MOVING EQUIPMENT



Mini Sirocco Fan (60Hz)

Single Phase

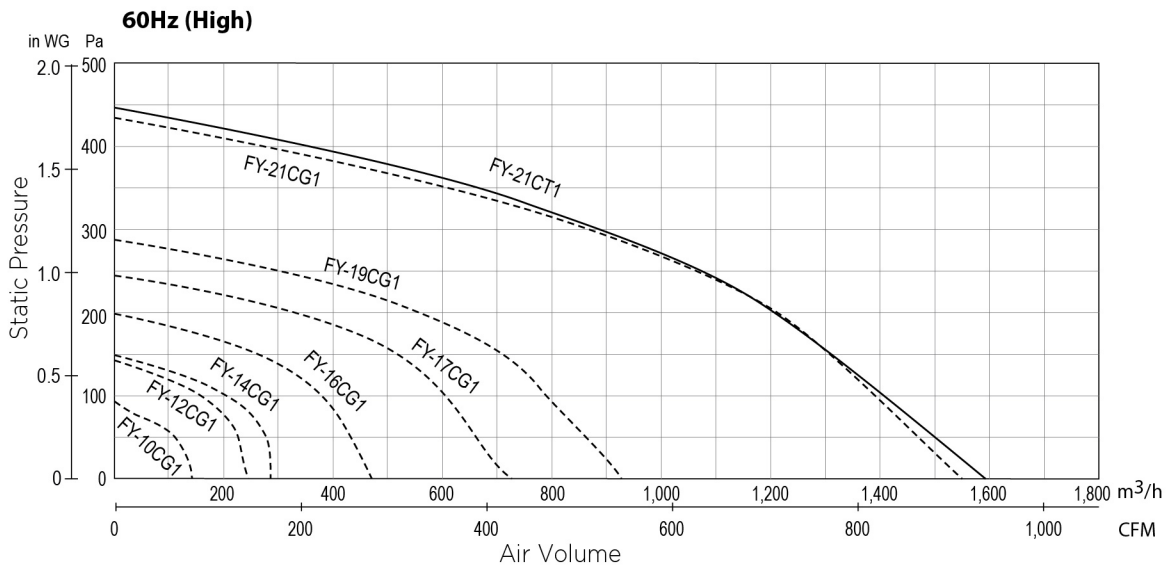
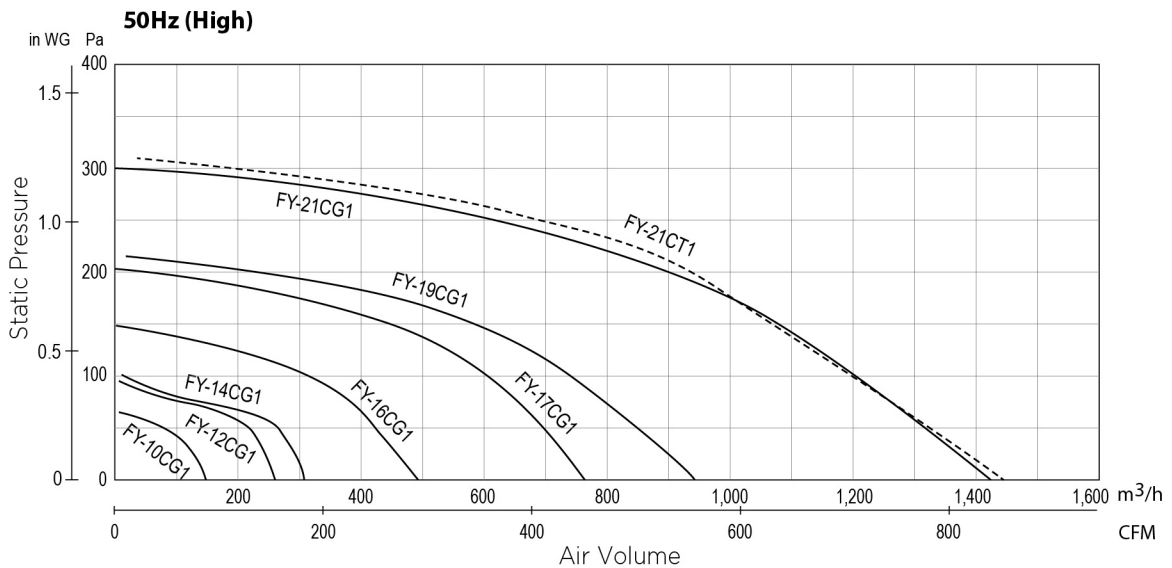
Three Phase

FY-10CG1, FY-12CG1
FY-14CG1, FY-16CG1
FY-17CG1, FY-19CG1
FY-21CG1

FY-21CT1

- Long life condenser motor with thermal cutoff
- Well lubricated ball bearing for long life operation
- High efficient sirocco fan employed for powerful airflow
- Outlet direction adjustable to vertical or horizontal position
- Compact size for narrow space installation
- 2-speed selection (except FY-10CG1, FY-12CG1 and FY-14CG1)

Performance Data



AIR MOVING EQUIPMENT

Specification (60Hz)

| | Model No. | Voltage | | Air Volume | | Consumption | RPM | Noise [dB(A)] | | | Weight | Impeller Diameter | Duct Size | |
|--------------|-----------|---------|------|------------|-------|-------------|-------|---------------|---------|-------------|--------|-------------------|-----------|--------------|
| | | [V] | [Hz] | [m³/h] | [CFM] | | | [W] | [min⁻¹] | Casing Side | | | | Suction Side |
| Single Phase | FY-10CG1 | 230 | 50 | | 144 | 85 | 11 | 980 | 32.0 | 38.0 | 38.0 | 3.1 | 10 | ø100 |
| | FY-12CG1 | 230 | 50 | | 258 | 152 | 21 | 760 | 34.0 | 39.0 | 39.0 | 3.6 | 12 | ø150 |
| | FY-14CG1 | 230 | 50 | | 308 | 181 | 30 | 930 | 39.0 | 44.5 | 44.5 | 3.8 | 12 | ø150 |
| | FY-16CG1 | 230 | 50 | Hi | 495 | 291 | 49 | 1,080 | 43.5 | 50.0 | 50.0 | 5.3 | 15 | ø150 |
| | | | | Lo | 365 | 215 | 41 | 875 | 38.0 | 44.5 | 44.5 | | | |
| | FY-17CG1 | 230 | 50 | Hi | 763 | 449 | 87 | 920 | 46.0 | 51.0 | 51.0 | 8.8 | 18 | ø200 |
| | | | | Lo | 640 | 377 | 74 | 815 | 42.5 | 47.0 | 47.0 | | | |
| | FY-19CG1 | 230 | 50 | Hi | 947 | 557 | 117 | 1,110 | 50.5 | 55.5 | 55.5 | 9.4 | 18 | ø200 |
| Lo | | | | 821 | 483 | 109 | 1,030 | 49.0 | 54.0 | 54.0 | | | | |
| FY-21CG1 | 230 | 50 | Hi | 1,420 | 836 | 240 | 1,325 | 57.0 | 61.0 | 61.0 | 15.0 | 20 | ø200 | |
| | | | Lo | 1,260 | 742 | 220 | 1,230 | 56.0 | 59.5 | 59.5 | | | | |
| Three Phase | FY-21CT1 | 380 | 50 | Hi | 1,450 | 853 | 253 | 1,355 | 57.5 | 61.5 | 61.5 | 14.5 | 20 | ø200 |
| | | | | Lo | 1,090 | 642 | 177 | 1,070 | 51.5 | 55.5 | 55.5 | | | |

Specification (60Hz)

| | Model No. | Voltage | | Air Volume | | Consumption | RPM | Noise [dB(A)] | | | Weight | Impeller Diameter | Duct Size | |
|--------------|-----------|---------|------|------------|-------|-------------|-------|---------------|---------|-------------|--------|-------------------|-----------|--------------|
| | | [V] | [Hz] | [m³/h] | [CFM] | | | [W] | [min⁻¹] | Casing Side | | | | Suction Side |
| Single Phase | FY-10CG1 | 230 | 60 | | 143 | 84 | 13 | 970 | 32.0 | 38.0 | 38.0 | 3.1 | 10 | ø100 |
| | FY-12CG1 | 230 | 60 | | 242 | 142 | 22 | 725 | 32.0 | 38.0 | 38.0 | 3.6 | 12 | ø150 |
| | FY-14CG1 | 230 | 60 | | 284 | 167 | 40 | 870 | 36.0 | 41.5 | 41.5 | 3.8 | 12 | ø150 |
| | FY-16CG1 | 230 | 60 | Hi | 470 | 277 | 59 | 1,060 | 42.5 | 49.0 | 49.0 | 5.3 | 15 | ø150 |
| | | | | Lo | 335 | 197 | 40 | 805 | 36.0 | 42.5 | 42.5 | | | |
| | FY-17CG1 | 230 | 60 | Hi | 722 | 425 | 95 | 850 | 44.5 | 49.0 | 49.0 | 8.8 | 18 | ø200 |
| | | | | Lo | 593 | 349 | 79 | 730 | 40.0 | 45.0 | 45.0 | | | |
| | FY-19CG1 | 230 | 60 | Hi | 931 | 548 | 143 | 1,100 | 50.0 | 55.0 | 55.0 | 9.4 | 18 | ø200 |
| Lo | | | | 791 | 466 | 127 | 985 | 48.0 | 53.0 | 53.0 | | | | |
| FY-21CG1 | 230 | 60 | Hi | 1,540 | 906 | 340 | 1,430 | 59.0 | 63.0 | 63.0 | 15.0 | 20 | ø200 | |
| | | | Lo | 1,230 | 724 | 300 | 1,180 | 54.0 | 58.5 | 58.5 | | | | |
| Three Phase | FY-21CT1 | 380 | 60 | Hi | 1,590 | 936 | 370 | 1,485 | 59.5 | 63.5 | 63.5 | 14.5 | 20 | ø200 |
| | | | | Lo | 1,020 | 600 | 228 | 1,030 | 50.0 | 54 | 54.0 | | | |

Note :

- Power consumption is expressed as open value.
- Air volume is measured using the chamber method (JIS B 8830 or JIS C 9603) at 0 Pa static pressure.
- Noise
Suction side - noise at 1.5 m of suction side
Casing side - noise at 1.5 m on the side of a machine body
Discharge side - noise at 1.5 m orthogonally at discharge side

Use Condition :

- Do not use it for ventilation at a site generating heat, oily smoke and/or moisture (Environmental condition : -10 deg C to +40 deg C, relative humidity below 85%)
- Install a door 600 x 600 mm or more for maintenance purpose.
- Install a leak breaker or a motor breaker on the source site. A control panel such as a contact switch relay is required for three phase power source.
- In cold air supply to indoor during winter and at any other occasion susceptible to dew drop, heat insulation is required.
- It is recommended to use a commercially available filter at the suction side to avoid dust and/or waste attachment on a blade.
- Install it on a horizontal direction.
- Do not perform parallel operation of more than one unit on a switch, for it may result in motor failure.