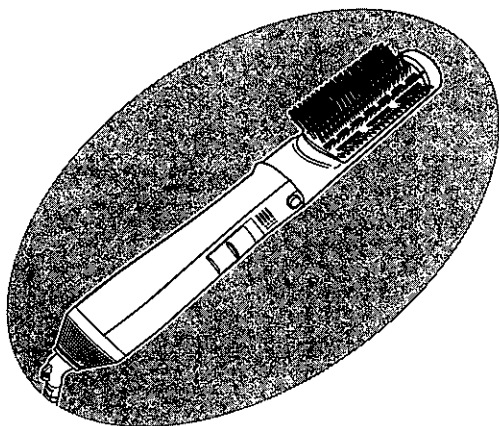


# Panasonic®

## Operating Instructions

(Household) Hair Styler

Model No. EH8465-A/EH8463-A/EH8461-A



**English**

**3**

## Operating Instructions

(Household) Hair Styler

Model No. EH8465-A/EH8463-A/EH8461-A

### Contents

---

<b>Safety precautions</b> .....	<b>4</b>	<b>Introduction of the attachments</b> .....	<b>8</b>
<b>Parts identification</b> .....	<b>8</b>	<b>Maintaining the hair styler</b> .....	<b>10</b>
<b>How to use the hair styler</b> .....	<b>8</b>	<b>Specifications</b> .....	<b>10</b>

Thank you for purchasing this Panasonic product.

**Before operating this unit, please read these instructions completely and save them for future use.**

## Safety precautions

To reduce the risk of injury, loss of life, electric shock, fire, malfunction, and damage to equipment or property, always observe the following safety precautions.

### Explanation of symbols

The following symbols are used to classify and describe the level of hazard, injury, and property damage caused when the denotation is disregarded and improper use is performed.



## WARNING

Denotes a potential hazard that could result in serious injury or death.



## CAUTION

Denotes a hazard that could result in minor injury.

The following symbols are used to classify and describe the type of instructions to be observed.



This symbol is used to alert users to a specific operating procedure that must not be performed.



This symbol is used to alert users to a specific operating procedure that must be followed in order to operate the unit safely.



## WARNING

### ► Regarding the plug and cord



**Do not use with the cord bundled.**  
- Doing so may cause fire or electric shock.

**Do not damage or modify, or forcefully bend, pull, or twist the cord.**



**Also, do not place anything heavy on or pinch the cord.**  
- Doing so may cause electric shock or fire due to a short circuit.

**Do not use when the plug or cord is damaged or hot.**



**Never use the appliance if the plug fits loosely in a household outlet.**  
- Doing so may cause burn, electric shock, or fire due to a short circuit.



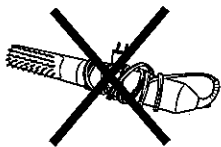
**Do not connect or disconnect the plug to a household outlet with a wet hand.**  
- Doing so may cause electric shock or injury.



## WARNING

**Do not wrap the cord around the main body when storing.**

- Doing so may cause the wire in the cord to break with the load, and may cause electric shock or fire due to a short circuit.



**Disconnect the plug by holding onto it instead of pulling on the cord.**



- Failure to do so may cause the wire in the cord to break, and may cause burn, electric shock, or fire due to a short circuit.



**Always turn OFF the power switch and disconnect the plug from the household outlet after use.**

- Failure to do so may cause fire or burn.

**Always ensure the appliance is operated on an electric power source matched to the rated voltage indicated on the appliance.**



**Fully insert the plug.**

- Failure to do so may cause fire or electric shock.

### ► In case of an abnormality or malfunction

**Immediately stop using and remove the plug if there is an abnormality or malfunction.**

- Failure to do so may cause fire, electric shock, or injury.



#### <Abnormality or malfunction cases>

- **Air is not emitted**
- **Unit stops sporadically**
- **Interior becomes red hot and smoke is emitted**
- Immediately request inspection or repair at an authorized service center.

### ► Maintenance



**When you see sparks around the air outlet while using the hot air setting, stop use and remove the lint on the air outlet and air inlet.**

- Failure to do so may cause burn or fire.



**Regularly clean the plug to prevent dust from accumulating.**

- Failure to do so may cause fire due to insulation failure caused by humidity.

Disconnect the plug and wipe with a dry cloth.

### ► Regarding the main body



**Do not block, or insert hair pins or other foreign objects into the air inlet, or air outlet.**

- Doing so may cause fire, electric shock, or burn.



**Do not leave the area with the power switch left on.**

- Doing so may cause fire.



**Do not use in proximity of flammable materials (such as alcohol, benzine, thinner, spray, hair care product, nail polish remover).**

- Doing so may cause an explosion or fire.



## WARNING

**Never modify, disassemble, or repair.**

- Doing so may cause ignition or injury due to abnormal operation.

Contact an authorized service center for repair.

**Do not store the appliance in a bathroom or location with high humidity. Also, do not place in a location where water may spill (such as top of a vanity).**

- Doing so may cause electric shock or fire.

**Do not use the appliance with a wet hand.**

- Doing so may cause electric shock or fire due to a short circuit.

**Do not store within the reach of children or infants. Do not let them use it.**

- Doing so may cause burn, electric shock, or injury.

**Do not immerse the appliance in water.**

**Do not use this hair styler near water.**

**Do not use this hair styler near bathtubs, showers, basins or other vessels containing water.**

- Doing so may cause electric shock or fire.



This symbol on the hair styler means "Do not use this hair styler near water".



**When the hair styler is used in a bathroom, unplug it after use since the proximity of water presents a hazard even when the hair styler is switched off.**

- Failure to do so may cause an accident or injury.



**For additional protection, the installation of a residual current device (RCD) having a rated residual operating current not exceeding 30 mA is advisable in the electrical circuit supplying the bathroom. Ask your installer for advice.**

- Failure to do so may cause an accident or injury.



**This appliance is not intended for use by persons (including children) with reduced physical, sensory or mental capabilities, or lack of experience and knowledge, unless they have been given supervision or instruction concerning use of the appliance by a person responsible for their safety. Children should be supervised to ensure that they do not play with the appliance.**

- Failure to do so may cause an accident or injury.



**If the supply cord is damaged, it must be replaced by the manufacturer, its service agent, or similarly qualified persons in order to avoid a hazard.**

- Failure to do so may cause an accident or injury.



## CAUTION

► To protect your hair



**Do not curl too much hair around the attachment.**

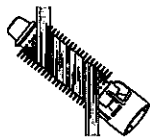
- Doing so may cause burns to the skin or hair.



## CAUTION

Do not curl and uncurl hair diagonally as shown in the diagram. **EH8465-A** **EH8463-A**

- Doing so may cause hair to become tangled, resulting in damage or burns.



**Do not use with the air inlet damaged.**

- Doing so may cause the hair to become tangled in the air inlet, resulting in damage to the hair.



**During use, be careful to prevent hair from being suctioned into the air inlet.**

- Failure to do so may cause the hair to become tangled in the air inlet, resulting in damage to the hair.

### ► Note the following precautions

**Do not store the cord in a twisted state.**



- Doing so may cause the wire in the cord to break with the load, and may cause electric shock or fire due to a short circuit.



**Do not drop or subject to shock.**

- Doing so may cause electric shock or ignition.



**Only use for drying or styling human hair. (Do not use on pets, or to dry clothing, shoes, etc.)**

- Failure to do so may cause fire or burn.

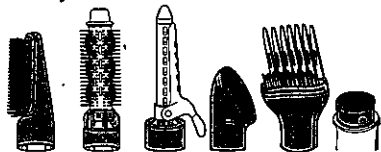


**Do not use on children or infants.**

- Doing so may cause burn.

**Do not touch the shaded area, which will become very hot during and immediately after use.**

- Doing so may cause burn.



**During use, do not spray hair spray etc. directly on the main body (including attachments).**

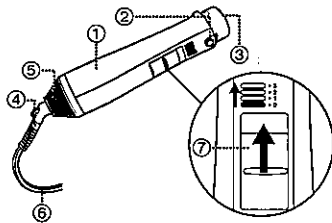
- Doing so may cause fire, electric shock, or burn.

### ► Note

- This appliance is equipped with an automatic overheating protective device. If the appliance overheats, it will switch to cool air mode. Switch off the appliance and unplug it from the household outlet. Allow it to cool down for a few minutes before using it again. Check that no fluff, hair etc. is in the air inlets and air outlets before switching it on again.
- Sparks may be seen from the interior when using hot air. These sparks are caused by the thermostat switch, the protective device, and this is not a dangerous.

## Parts identification

- ① Main body
- ② Attachment release button
- ③ Air outlet
- ④ Hang ring
- ⑤ Air inlet (filter)
- ⑥ Cord
- ⑦ Power switch/speed selector



3: Hot airflow (Strong hot airflow)

2: Gentle drying (Gentle hot airflow)

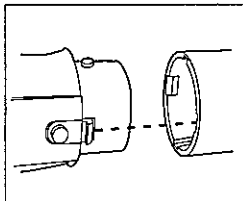
1: Hair setting mode (Cool airflow)

0: Off

## How to use the hair styler

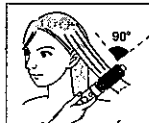
### Fixing the attachment

- Align the attachment with the hair styler as shown. Ensure that the groove of the attachment and the hook of the body are aligned with each other. Insert the hair styler in the attachment until it clicks.
- Press the attachment release button and pull out the attachment to remove it.



### Do the following to prevent tangled hair while using the roller brush.

- Take only a small amount of hair when rolling and roll the hair at a right angle (90°) as shown.
- Do not do more than two rolls at a time.
- Keep the roller as far away as possible from your head and unroll the roller at the same angle as your hair.
- Do not roll or unroll your hair at an incline angle.
- Do not change the diameter of the roller brushes while rolling your hair.



## Introduction of the attachments

### Blow brush

EH8465-A EH8463-A EH8461-A

Use for a natural hair style.



Take a small amount of hair and brush from the inside pulling it down gently. Use your free hand to support the motion.

## Roller brush EH8465-A EH8463-A

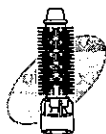
The roller is thick, which helps prevent hair from tangling when you release hair from the brush.

### ► For large curls

Rotate the brush to curl the hair approximately 1.5 times around the brush.

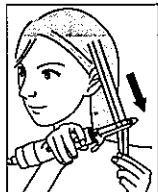
### ► For increasing volume

Gently grab the hair at the roots, and rotate the brush to lift the hair up while applying tension.



## Air iron EH8465-A EH8463-A

Use for beautiful spiral curl.



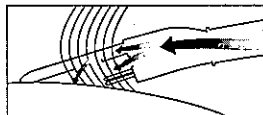
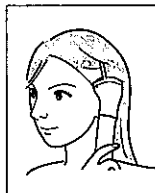
Take a small amount of hair and place it under the clamp. Roll it tightly around the iron in the desired direction. Depending on the desired types of curls, the hair can be curled inwards or outwards to create different directional curls.

- Allow the hot air to set the hair for 10 seconds before unrolling.



## Volume lifter EH8465-A

Use for creating volume.



Apply warm air gently at the roots to lift bangs.

Brush hair towards the top for added body on the sides.

For added body from the roots up, use the lifting comb while applying warm air.

## Nozzle EH8465-A

Use for overall drying.





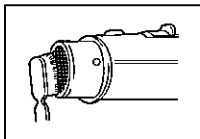
## Maintaining the hair styler

Clean the air inlets and outlets to prevent blockages that may cause overheating.

The hair styler should be cleaned at least once a month. Set the power switch to [0], disconnect the plug from the household outlet. (Except when performing maintenance on the air outlet.)

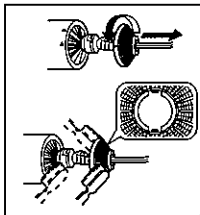
### Air outlet

- Set the power switch to [1] and blow away the dust etc. as you scrub with the brush.
- During maintenance, do not block the air inlet with your hands etc.
- Be careful when using the hair styler first time after maintenance, since it may blow out dust etc.



### Air inlet

- To clean the air inlet, remove the filter by turning it counterclockwise direction and pull the filter towards your direction.
- Remove dust or hair by using a brush.
- To re-attach the filter, ensure that the groove of the connector and the projection of the filter are in line. Twist to fit.



## Specifications

Model No.: EH8465-A

Voltage	220 – 240 V ~ 50 – 60 Hz
Output	550 – 650 W
Accessories	Blow brush, Roller brush, Air iron, Volume lifter, Nozzle, Pouch

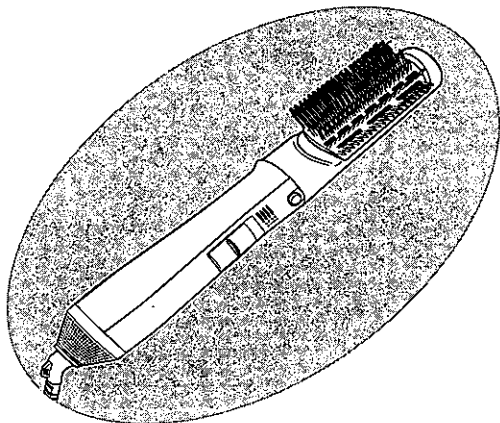
Model No.: EH8463-A

Voltage	220 – 240 V ~ 50 – 60 Hz
Output	550 – 650 W
Accessories	Blow brush, Roller brush, Air iron, Pouch

Model No.: EH8461-A

Voltage	220 – 240 V ~ 50 – 60 Hz
Output	550 – 650 W
Accessories	Blow brush

This product is intended for household use only.



# Panasonic®

Operating Instructions  
(Household) Hair Styler

Model No. EH8465-A/EH8463-A/EH8461-A

18

عربي

Panasonic Corporation  
<http://www.panasonic.com>  
© Panasonic Corporation 2015